

Product datasheet for **MR201376**

Ptp4a2 (NM_008974) Mouse Tagged ORF Clone

Product data:

Product Type: Expression Plasmids
Product Name: Ptp4a2 (NM_008974) Mouse Tagged ORF Clone
Tag: Myc-DDK
Symbol: Ptp4a2
Synonyms: Prl-2
Mammalian Cell Selection: Neomycin
Vector: pCMV6-Entry (PS100001)
E. coli Selection: Kanamycin (25 ug/mL)
ORF Nucleotide Sequence: >MR201376 ORF sequence
Red=Cloning site Blue=ORF Green=Tags(s)

TTTTGTAATACGACTCACTATAGGGCGCCGGGAATTCGTCGACTGGATCCGGTACCGAGGAGATCTGCC
GCC**CGGATCGCC**

ATGAACCGTCCAGCCCCTGTGGAGATCTCTTATGAGAACATGCGTTTTCTGATAACTCACACCCACCA
ATGCGACTCTCAACAAGTTCACAGAGGAACCTAAGAAGTACGGAGTGACAACCTTTGGTTCGAGTTTGTGA
TGCTACATATGATAAAGCTCCAGTTGAAAAAGAAGGAATCCACGTTCTAGATTGGCCGTTTGATGATGGA
GCTCCACCCCTAATCAGATAGTAGATGATTGGCTAAACCTGTTAAAAACCAATTCGTGAAGAGCCAG
GCTGTTGTGTGCAGTGCATTGTGTTGCAGGATTGGGAAGGGCTCCTGTGCTAGTTGCGCTTGCATTGAT
TGAATGCGGAATGAAGTATGAAGATGCTGTTCAATTTATAAGACAAAAAGAAGAGGAGCATTCAATTCC
AAACAGCTGCTTTACTTGGAGAAGTACCGACCTAAGATGCGGTTACGCTTCAGAGATACCAATGGGCACT
GCTGTGTTGAG

ACGCGTACGCGGCCGCTCGAGCAGAACTCATCTCAGAAGAGGATCTGGCAGCAATGATATCCTGGATT
ACAAGGATGACGACGATAAGGTTTAA

Protein Sequence: >MR201376 protein sequence
Red=Cloning site Green=Tags(s)

MNRPAPVEISYENMRFLITHNPTNATLNKFTEELKKYGVTTLVRVCDATYDKAPVEKEGIHVLDPFDG
APPPNQIVDDWLNLLKTKFREEPGCCVAVHCVAGLGRAPVLVALALIECGMKYEDAVQFIRQKRRGAFNS
KQLLYLEKYRPMRLRFRDRTNGHCCVQ

TRTRPLEQKLISEEDLAANDILDYKDDDDKV

Restriction Sites: Sgfl-MluI



Cloning Scheme:



ACCN: NM_008974

ORF Size: 504 bp

OTI Disclaimer: The molecular sequence of this clone aligns with the gene accession number as a point of reference only. However, individual transcript sequences of the same gene can differ through naturally occurring variations (e.g. polymorphisms), each with its own valid existence. This clone is substantially in agreement with the reference, but a complete review of all prevailing variants is recommended prior to use. [More info](#)

OTI Annotation: This clone was engineered to express the complete ORF with an expression tag. Expression varies depending on the nature of the gene.

Components: The ORF clone is ion-exchange column purified and shipped in a 2D barcoded Matrix tube containing 10ug of transfection-ready, dried plasmid DNA (reconstitute with 100 ul of water).

Reconstitution Method:

1. Centrifuge at 5,000xg for 5min.
2. Carefully open the tube and add 100ul of sterile water to dissolve the DNA.
3. Close the tube and incubate for 10 minutes at room temperature.
4. Briefly vortex the tube and then do a quick spin (less than 5000xg) to concentrate the liquid at the bottom.
5. Store the suspended plasmid at -20°C. The DNA is stable for at least one year from date of shipping when stored at -20°C.

RefSeq: [NM_008974.4](#), [NP_033000.1](#)

RefSeq Size: 3413 bp

RefSeq ORF: 504 bp

Locus ID: 19244

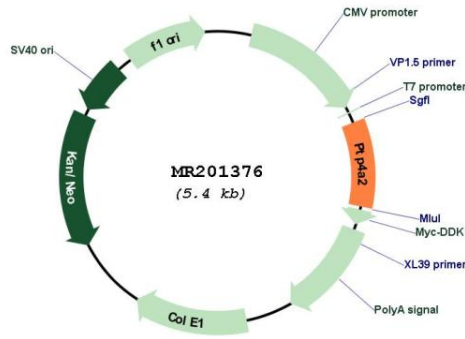
UniProt ID: [O70274](#)

Cytogenetics: 4 D2.2

MW: 19.1 kDa

Gene Summary: Protein tyrosine phosphatase which stimulates progression from G1 into S phase during mitosis. Inhibits geranylgeranyl transferase type II activity by blocking the association between RABGGTA and RABGGTB (By similarity).[UniProtKB/Swiss-Prot Function]

Product images:



Circular map for MR201376