

Product datasheet for **MR201368**

Rhoj (BC060193) Mouse Tagged ORF Clone

Product data:

Product Type: Expression Plasmids
Product Name: Rhoj (BC060193) Mouse Tagged ORF Clone
Tag: Myc-DDK
Symbol: Rhoj
Synonyms: TC10L, TCL
Vector: pCMV6-Entry (PS100001)
E. coli Selection: Kanamycin (25 ug/mL)
Cell Selection: Neomycin
ORF Nucleotide Sequence: >MR201368 representing BC060193
Red=Cloning site Blue=ORF Green=Tags(s)

TTTTGTAATACGACTCACTATAGGGCGGCCGGAATTCGTCGACTGGATCCGGTACCGAGGAGATCTGCC
GCC**CGATCGCC**

ATGAGCTGCAGAGAGAGGACCGACAGCAGCTGCGGCTGCAATGGACATGAGGAGAACAGGATCCTGAAGT
GCGTGGTGGTCCGGGACGGCGGGTGGGAAGACCTGCTTGTGTGATGAGCTACGCCAACGACGCCTTCCC
AGAGGAATACGTGCCACTGTGTTTGACCACTACGCAGTTACCGTGACGGTGGGAGGCAAGCAGCACTTG
CTTGACTATACGACACTGCAGGACAGGAGGATTACAACCAGCTGCGGCCACTCTTTACCCAACACAG
ATGTGTTTCTCATCTGTTCTCTGTCGTAACCCAGCCTCTTACCACAACGTTTCAGGAGGAGTGGGTCCC
GGAAGTGAAGGACTGCATGCCTCATGTGCCTTATGTGCTCATCGGAACCCAGATTGATCTCCGAGATGAC
CCCAAAACCTTGGCGCTCTGCTGTACATGAAGGAGAAGCCCCTCACCTATGAGCACGGCGTGAAGCTGG
CGAAAGCGGTA

ACGCGTACGCGGCCGCTCGAGCAGAACTCATCTCAGAAGAGGATCTGGCAGCAATGATATCCTGGATT
ACAAGGATGACGACGATAAGGTTTAA

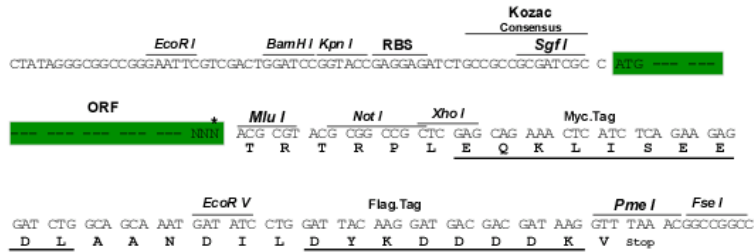
Restriction Sites: Sgfl-MluI



[View online »](#)

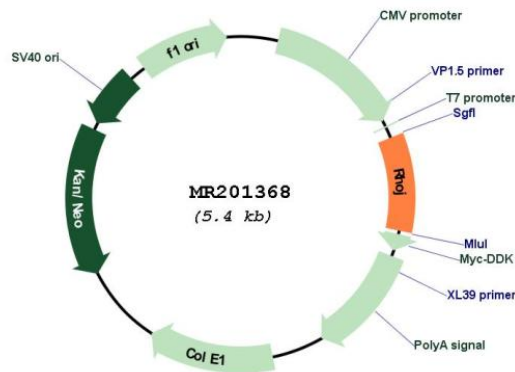
Cloning Scheme:

Cloning sites used for ORF Shuttling:



* The last codon before the Stop codon of the ORF

Plasmid Map:



ACCN: BC060193
 ORF Size: 501 bp

OTI Disclaimer:	The molecular sequence of this clone aligns with the gene accession number as a point of reference only. However, individual transcript sequences of the same gene can differ through naturally occurring variations (e.g. polymorphisms), each with its own valid existence. This clone is substantially in agreement with the reference, but a complete review of all prevailing variants is recommended prior to use. More info
OTI Annotation:	This clone was engineered to express the complete ORF with an expression tag. Expression varies depending on the nature of the gene.
Components:	The ORF clone is ion-exchange column purified and shipped in a 2D barcoded Matrix tube containing 10ug of transfection-ready, dried plasmid DNA (reconstitute with 100 ul of water).
Reconstitution Method:	<ol style="list-style-type: none">1. Centrifuge at 5,000xg for 5min.2. Carefully open the tube and add 100ul of sterile water to dissolve the DNA.3. Close the tube and incubate for 10 minutes at room temperature.4. Briefly vortex the tube and then do a quick spin (less than 5000xg) to concentrate the liquid at the bottom.5. Store the suspended plasmid at -20°C. The DNA is stable for at least one year from date of shipping when stored at -20°C.
RefSeq:	BC060193
RefSeq Size:	4792 bp
RefSeq ORF:	503 bp
Locus ID:	80837
Cytogenetics:	12 C3
MW:	175.7 kDa
Gene Summary:	Plasma membrane-associated small GTPase specifically involved in angiogenesis (By similarity). Required for endothelial cell migration during vascular development via its interaction with GLUL (By similarity). Elicits the formation of F-actin-rich structures, thereby regulating endothelial cell migration (PubMed:10967094).[UniProtKB/Swiss-Prot Function]