

## Product datasheet for MR201366

### Tmem35a (NM\_026239) Mouse Tagged ORF Clone

#### Product data:

**Product Type:** Expression Plasmids  
**Product Name:** Tmem35a (NM\_026239) Mouse Tagged ORF Clone  
**Tag:** Myc-DDK  
**Symbol:** Tmem35a  
**Synonyms:** 9030603L14Rik; AI841526; PMP52; Tmem35  
**Mammalian Cell Selection:** Neomycin  
**Vector:** pCMV6-Entry (PS100001)  
**E. coli Selection:** Kanamycin (25 ug/mL)  
**ORF Nucleotide Sequence:** >MR201366 ORF sequence  
 Red=Cloning site Blue=ORF Green=Tags(s)

TTTTGTAATACGACTCACTATAGGGCGGCCGGAATTCGTCGACTGGATCCGGTACCGAGGAGATCTGCC  
 GCC**CGATCGCC**

ATGGCATCCCCACGAACCATAAATATCATGGCCCTCTCAGTGGCCCTGGGACTCTTCTTTGTTTTTCATGG  
 GGACCATCAAGTTGACCCCCAGGCTCAGCAAGGATGCCTACAGTCAAATGAAACGTGCTTACAAGAGCTA  
 CGTTCGAGCCCTTCTCTGCTGAAGAAAATGGGCATCAATCCATCCTCCTCGGAAAAGTATTGGTGCT  
 CTTGAAGTGGCCTGTGGCATTGTCATGACCCTGGTACCCGGTCGTCCTCAAAGATGTGCCAACTTCTTC  
 TGCTCTTGCTGGTGTGGCTGTGCTCTTCTCCACCAGCTGGTGGTGATCCTCTCAAACGCTACGCCCA  
 TGCTCTGGTGTGGAAATCCTGCTCACCTGCCGCTGCTGATTGCCCGCAAGCCTGAAGACAGATCTTCT  
 GAGAAGAAGGCCTGCCTGAGAGTGCAGAGGAGCAACCATCCTGTATGAGAAGGCCCCCGAGGCAAAG  
 TGAAGGTGTCA

**ACGCGT**ACGCGGCCGCTCGAGCAGAACTCATCTCAGAAGAGGATCTGGCAGCAAATGATATCCTGGATT  
 ACAAGGATGACGACGATAAGGTTTAA

**Protein Sequence:** >MR201366 protein sequence  
 Red=Cloning site Green=Tags(s)

MASPRITIMALSVALGLFFVFMGTIKLTPRLSKDAYSEMKRAYKSYVRALPLLKKMGINSILLRKSIGA  
 LEVACGIVMTLVPGRPKDVANFFLLLLVLAVLFFHQLVGDPLKRYAHALVFGILLTCRLLIARKPEDRSS  
 EKKALPESAEQPSLYEKAPQGKVKVS

**TR**TRPLEQKLISEEDLAANDILDYKDDDDKV

**Restriction Sites:** Sgfl-MluI



[View online »](#)

**Cloning Scheme:**


**ACCN:** NM\_026239

**ORF Size:** 504 bp

**OTI Disclaimer:** The molecular sequence of this clone aligns with the gene accession number as a point of reference only. However, individual transcript sequences of the same gene can differ through naturally occurring variations (e.g. polymorphisms), each with its own valid existence. This clone is substantially in agreement with the reference, but a complete review of all prevailing variants is recommended prior to use. [More info](#)

**OTI Annotation:** This clone was engineered to express the complete ORF with an expression tag. Expression varies depending on the nature of the gene.

**Components:** The ORF clone is ion-exchange column purified and shipped in a 2D barcoded Matrix tube containing 10ug of transfection-ready, dried plasmid DNA (reconstitute with 100 ul of water).

- Reconstitution Method:**
1. Centrifuge at 5,000xg for 5min.
  2. Carefully open the tube and add 100ul of sterile water to dissolve the DNA.
  3. Close the tube and incubate for 10 minutes at room temperature.
  4. Briefly vortex the tube and then do a quick spin (less than 5000xg) to concentrate the liquid at the bottom.
  5. Store the suspended plasmid at -20°C. The DNA is stable for at least one year from date of shipping when stored at -20°C.

**RefSeq:** [NM\\_026239.2](#), [NP\\_080515.1](#)

**RefSeq Size:** 1979 bp

**RefSeq ORF:** 504 bp

**Locus ID:** 67564

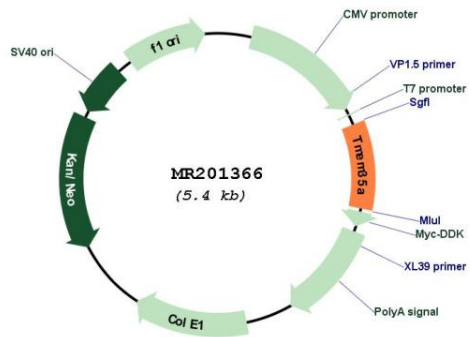
**UniProt ID:** [Q9D328](#)

**Cytogenetics:** X E3

MW: 18.5 kDa

Gene Summary: A soluble peptide released by shedding may interact with NGFR and modulate neurite outgrowth.[UniProtKB/Swiss-Prot Function]

### Product images:



Circular map for MR201366