

Product datasheet for MR201314

Ppia (NM_008907) Mouse Tagged ORF Clone

Product data:

Product Type: Expression Plasmids
Product Name: Ppia (NM_008907) Mouse Tagged ORF Clone
Tag: Myc-DDK
Symbol: Ppia
Synonyms: 2700098C05; Cphn; CyP-18; CypA
Mammalian Cell Selection: Neomycin
Vector: pCMV6-Entry (PS100001)
E. coli Selection: Kanamycin (25 ug/mL)
ORF Nucleotide Sequence: >MR201314 ORF sequence
 Red=Cloning site Blue=ORF Green=Tags(s)

TTTTGTAATACGACTCACTATAGGGCGGCCGGAATTCGTCGACTGGATCCGGTACCGAGGAGATCTGCC
 GCC**CGATCGCC**

ATGGTCAACCCACCCTGTTCTTCGACATCACGGCCGATGACGAGCCCTTGGGCCGCTCTCCTTCGAGC
 TGTTTGCAGACAAAGTCCAAAGACAGCAGAAAACCTTCGAGCTCTGAGCACTGGAGAGAAAGGATTTGG
 CTATAAGGGTTCCTCTTCACAGAATTATCCAGGATTCATGTGCCAGGGTGGTACTTTACACGCCAT
 AATGGCACTGGCGCAGGTCCATCTACGGAGAGAAATTTGAGGATGAGAATTCATCCTAAAGCATAACAG
 GTCTGGCATCTGTCCATGGCAAATGCTGGACCAACACAAACGGTTCCAGTTTTTATCTGCACTGC
 CAAGACTGAATGGCTGGATGGCAAGCATGTGGTCTTTGGGAAGGTGAAAGAAGGCATGAACATTGTGGAA
 GCCATGGAGCGTTTTGGGTCCAGGAATGGCAAGACCAGCAAGAAGATCACCATTTCCGACTGTGGACAGC
 TC

ACGCGTACGCGGCCGCTCGAGCAGAAACTCATCTCAGAAGAGGATCTGGCAGCAAATGATATCCTGGATT
 ACAAGGATGACGACGATAAGGTTTAA

Protein Sequence: >MR201314 protein sequence
 Red=Cloning site Green=Tags(s)

MVNPTVFFDITADDEPLGRVSFELFADKVPKTAENFRALSTGEKFGFYKGSFFHRIIPGFMCQGGDFTRH
 NGTGGRSIYGEKFEDEFILKHTGPGILSMANAGPNTNGSQFFICTAKTEWLDGKHVVFVKVKEGMNIVE
 AMERFGRNGKTSKKITISDCGQL

TRTRPLEQKLISEEDLAANDILDYKDDDDKV

Restriction Sites: Sgfl-MluI



Cloning Scheme:



ACCN: NM_008907

ORF Size: 495 bp

OTI Disclaimer: The molecular sequence of this clone aligns with the gene accession number as a point of reference only. However, individual transcript sequences of the same gene can differ through naturally occurring variations (e.g. polymorphisms), each with its own valid existence. This clone is substantially in agreement with the reference, but a complete review of all prevailing variants is recommended prior to use. [More info](#)

OTI Annotation: This clone was engineered to express the complete ORF with an expression tag. Expression varies depending on the nature of the gene.

Components: The ORF clone is ion-exchange column purified and shipped in a 2D barcoded Matrix tube containing 10ug of transfection-ready, dried plasmid DNA (reconstitute with 100 ul of water).

Reconstitution Method:

1. Centrifuge at 5,000xg for 5min.
2. Carefully open the tube and add 100ul of sterile water to dissolve the DNA.
3. Close the tube and incubate for 10 minutes at room temperature.
4. Briefly vortex the tube and then do a quick spin (less than 5000xg) to concentrate the liquid at the bottom.
5. Store the suspended plasmid at -20°C. The DNA is stable for at least one year from date of shipping when stored at -20°C.

RefSeq: [NM_008907.2](#)

RefSeq Size: 736 bp

RefSeq ORF: 495 bp

Locus ID: 268373

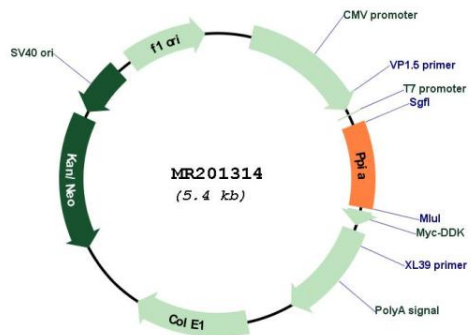
UniProt ID: [P17742](#)

Cytogenetics: 11 3.97 cM

MW: 18 kDa

Gene Summary: PPIase that catalyzes the cis-trans isomerization of proline imidic peptide bonds in oligopeptides and may therefore assist protein folding.[UniProtKB/Swiss-Prot Function]

Product images:



Circular map for MR201314