

Product datasheet for MR201308

0610008C08Rik (BC016557) Mouse Tagged ORF Clone

Product data:

Product Type: Expression Plasmids
Product Name: 0610008C08Rik (BC016557) Mouse Tagged ORF Clone
Tag: Myc-DDK
Symbol: 0610008C08Rik
Synonyms: 0610008C08Rik; 1110019O03Rik
Mammalian Cell Selection: Neomycin
Vector: pCMV6-Entry (PS100001)
E. coli Selection: Kanamycin (25 ug/mL)
ORF Nucleotide Sequence: >MR201308 representing BC016557
Red=Cloning site Blue=ORF Green=Tags(s)

TTTTGTAATACGACTCACTATAGGGCGCCGGGAATTCGTCGACTGGATCCGGTACCGAGGAGATCTGCC
GCC**CGATCGCC**

ATGAAGATCGATGAGCTTTCCTACTCTACTCAGTTCCTGAGGGTCAATCTAAATATGTGGAGGAGCCAAGGA
CTCAACTGAAGAAAACATCTCACAACCTCCGACATCATTGTGAGCCATATACAAGTTTCTGTGAGGAAAT
ATACTCCATACTAAACCAAGGTGGATCACTTGTCCAGTGGGAGTAGACAATACTATCTTCAA
AATGCGCCTCCTGGATTTTCCCAAGACTCGGTGTTATTGGTTTTGCTGGTTTTGTGGACTCCTTTTTG
CTAGAGGTTCAAAAATAAAGAAGCTGGTGTATCCTCCTTTTTTTCATGGGATTAGGTGCCTCTGTCTATTA
CCCACAACAAGCCATCACCATTGCCAGATCACTGGGGAGAAGTTATGACTGGGATTACGAGGGTAC
ATAGTTATAGAAGATTTGTGGAAGCAAAATTTTCAGAAGCCAGGAAATGTGAAGAATTCACCTGGAATA
AA

ACGCGTACGCGGCCGCTCGAGCAGAAACTCATCTCAGAAGAGGATCTGGCAGCAAATGATATCCTGGATT
ACAAGGATGACGACGATAAGGTTTAA

Protein Sequence: >MR201308 representing BC016557
Red=Cloning site Green=Tags(s)
MKIDELSLYSVPEGQSKYVEEPRTQLEENISQLRHHCEPYTSFCQEIYSHTKPKVDHFVQWGVNDNYLQ
NAPPGFFPRLGVIGFAGFVGLLFARGSKIKKLVYPPFFMGLGASVYYPQQAITIAQITGEKLYDWGLRGY
IVIEDLWKQNFQKPGNVKNSPGNK

TRTRPLEQKLISEEDLAANDILDYKDDDDKV

Restriction Sites: Sgfl-MluI



[View online »](#)

Cloning Scheme:


ACCN: BC016557

ORF Size: 492 bp

OTI Disclaimer: The molecular sequence of this clone aligns with the gene accession number as a point of reference only. However, individual transcript sequences of the same gene can differ through naturally occurring variations (e.g. polymorphisms), each with its own valid existence. This clone is substantially in agreement with the reference, but a complete review of all prevailing variants is recommended prior to use. [More info](#)

OTI Annotation: This clone was engineered to express the complete ORF with an expression tag. Expression varies depending on the nature of the gene.

Components: The ORF clone is ion-exchange column purified and shipped in a 2D barcoded Matrix tube containing 10ug of transfection-ready, dried plasmid DNA (reconstitute with 100 ul of water).

- Reconstitution Method:**
1. Centrifuge at 5,000xg for 5min.
 2. Carefully open the tube and add 100ul of sterile water to dissolve the DNA.
 3. Close the tube and incubate for 10 minutes at room temperature.
 4. Briefly vortex the tube and then do a quick spin (less than 5000xg) to concentrate the liquid at the bottom.
 5. Store the suspended plasmid at -20°C. The DNA is stable for at least one year from date of shipping when stored at -20°C.

Note: Plasmids are not sterile. For experiments where strict sterility is required, filtration with 0.22um filter is required.

RefSeq: [BC016557.1](#)

RefSeq Size: 1186 bp

RefSeq ORF: 494 bp

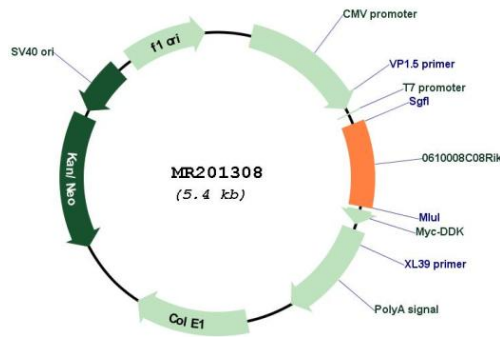
Locus ID: 68316

Cytogenetics: X C3

MW: 43.5 kDa

Gene Summary: Component of the MICOS complex, a large protein complex of the mitochondrial inner membrane that plays crucial roles in the maintenance of crista junctions, inner membrane architecture, and formation of contact sites to the outer membrane. Plays a crucial role in crista junction formation and mitochondrial function (By similarity). Can induce cardiac lipotoxicity by enhancing mitochondrial respiration and fatty acid metabolism in cardiac myoblasts (PubMed:24743151). Promotes cholesterol efflux from macrophage cells. Detected in HDL, LDL and VLDL. Secreted by a microsomal triglyceride transfer protein (MTTP)-dependent mechanism, probably as a VLDL-associated protein that is subsequently transferred to HDL (By similarity).[UniProtKB/Swiss-Prot Function]

Product images:



Circular map for MR201308