

## Product datasheet for **MR201281**

### Ly86 (NM\_010745) Mouse Tagged ORF Clone

#### Product data:

**Product Type:** Expression Plasmids  
**Product Name:** Ly86 (NM\_010745) Mouse Tagged ORF Clone  
**Tag:** Myc-DDK  
**Symbol:** Ly86  
**Synonyms:** ly86\_tv2; MD-1; MD1  
**Mammalian Cell Selection:** Neomycin  
**Vector:** pCMV6-Entry (PS100001)  
**E. coli Selection:** Kanamycin (25 ug/mL)  
**ORF Nucleotide Sequence:** >MR201281 ORF sequence  
Red=Cloning site Blue=ORF Green=Tags(s)

TTTTGTAATACGACTCACTATAGGGCGGCCGGAATTCGTCGACTGGATCCGGTACCGAGGAGATCTGCC  
GCC**CGCATCGCC**

ATGAATGGTGTGCGAGCTGCCCTCCTTGTGTGGATTCTGACTTCTCCGAGCAGCAGTGACCATGGCAGCG  
AAAATGGTTGGCCCAAGCACACGGCCTGCAACAGTGGGGGCTTGGAAAGTAGTCTACCAGAGCTGTGATCC  
CTTACAGGATTTGGCCTTCCATTGACCAGTGTCCAAGCAGATCCAATCAAATCTCAACATTAGATTT  
GGCATCATTCTGAGACAGGATATCAGAAAGCTGTTTCTGGACATAACTCTGATGGCAAAGGCTCTTCTA  
TTCTGAAGTACTCTATCCCCTTGTGAGGAGGACCAGCCAAGTCTCATTCTGTGGAAGAAGAAAAGG  
AGAACAGATATACTATGCCGGCCCTGTCAATAACCCTGGACTTGATGTTCCACAGGGAGAATATCAGCTC  
TTGCTGGAAGTGTACAATGAAAACCGTGCTACTGTGGCTTGTGCCAATGCCACTGTCACCTCCTCC

**ACGCGT**ACGCGGCCGCTCGAGCAGAACTCATCTCAGAAGAGGATCTGGCAGCAAATGATATCCTGGATT  
ACAAGGATGACGACGATAAGGTTTAA

**Protein Sequence:** >MR201281 protein sequence  
Red=Cloning site Green=Tags(s)

MNGVAAALLVWILTSPSSSDHSENGWPKHTACNSGGLEVYVYQSCDPLQDFGLSIDQCSKQIQSNLNIRF  
GIILRQDIRKFLDITLMAKGSSILNYSYPLCEEDQPKFSFCGRRKGEQIYYAGPVNNPGLDVPQGEYQL  
LLELYNENRATVACANATVTSS

**TR**TRPLEQKLISEEDLAANDILDYKDDDDKV

**Restriction Sites:** SgfI-MluI



[View online »](#)

**Cloning Scheme:**


**ACCN:** NM\_010745

**ORF Size:** 489 bp

**OTI Disclaimer:** The molecular sequence of this clone aligns with the gene accession number as a point of reference only. However, individual transcript sequences of the same gene can differ through naturally occurring variations (e.g. polymorphisms), each with its own valid existence. This clone is substantially in agreement with the reference, but a complete review of all prevailing variants is recommended prior to use. [More info](#)

**OTI Annotation:** This clone was engineered to express the complete ORF with an expression tag. Expression varies depending on the nature of the gene.

**Components:** The ORF clone is ion-exchange column purified and shipped in a 2D barcoded Matrix tube containing 10ug of transfection-ready, dried plasmid DNA (reconstitute with 100 ul of water).

- Reconstitution Method:**
1. Centrifuge at 5,000xg for 5min.
  2. Carefully open the tube and add 100ul of sterile water to dissolve the DNA.
  3. Close the tube and incubate for 10 minutes at room temperature.
  4. Briefly vortex the tube and then do a quick spin (less than 5000xg) to concentrate the liquid at the bottom.
  5. Store the suspended plasmid at -20°C. The DNA is stable for at least one year from date of shipping when stored at -20°C.

**RefSeq:** [NM\\_010745.2](#), [NP\\_034875.1](#)

**RefSeq Size:** 997 bp

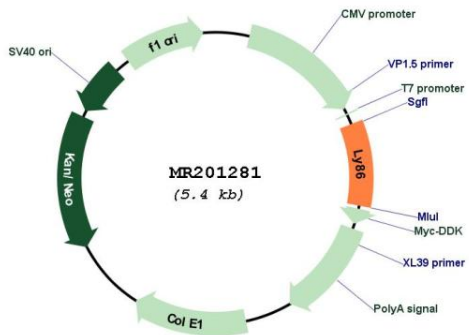
**RefSeq ORF:** 489 bp

**Locus ID:** 17084

**UniProt ID:** [O88188](#)

**Cytogenetics:** 13 A3.3  
**MW:** 17.8 kDa  
**Gene Summary:** May cooperate with CD180 and TLR4 to mediate the innate immune response to bacterial lipopolysaccharide (LPS) and cytokine production. Important for efficient CD180 cell surface expression.[UniProtKB/Swiss-Prot Function]

**Product images:**



Circular map for MR201281