

## Product datasheet for MR201274L3

### IL15 (NM\_008357) Mouse Tagged Lenti ORF Clone

#### Product data:

Product Type:	Expression Plasmids
Product Name:	IL15 (NM_008357) Mouse Tagged Lenti ORF Clone
Tag:	Myc-DDK
Symbol:	IL15
Synonyms:	AI503618; IL-15
Mammalian Cell Selection:	Puromycin
Vector:	pLenti-C-Myc-DDK-P2A-Puro (PS100092)
E. coli Selection:	Chloramphenicol (34 ug/mL)
ORF Nucleotide Sequence:	The ORF insert of this clone is exactly the same as(MR201274).
Restriction Sites:	SgfI-MluI
Cloning Scheme:	

Cloning sites used for ORF Shuttling:



\* The last codon before the Stop codon of the ORF.

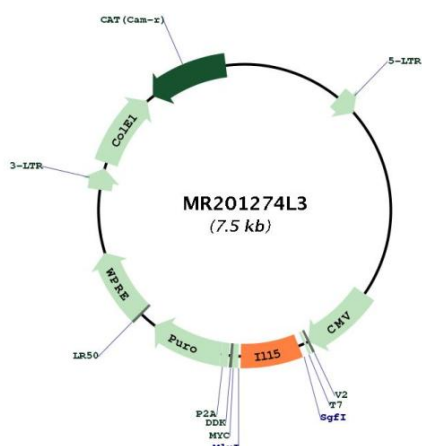
ACCN:	NM_008357
ORF Size:	489 bp



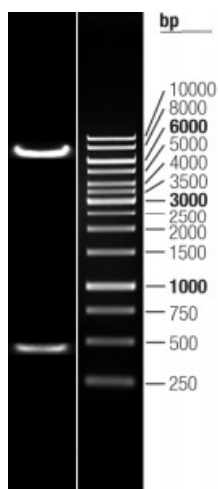
[View online »](#)

<b>OTI Disclaimer:</b>	<p>Due to the inherent nature of this plasmid, standard methods to replicate additional amounts of DNA in E. coli are highly likely to result in mutations and/or rearrangements. Therefore, OriGene does not guarantee the capability to replicate this plasmid DNA. Additional amounts of DNA can be purchased from OriGene with batch-specific, full-sequence verification at a reduced cost. Please contact our customer care team at <a href="mailto:custsupport@origene.com">custsupport@origene.com</a> or by calling 301.340.3188 option 3 for pricing and delivery.</p> <p>The molecular sequence of this clone aligns with the gene accession number as a point of reference only. However, individual transcript sequences of the same gene can differ through naturally occurring variations (e.g. polymorphisms), each with its own valid existence. This clone is substantially in agreement with the reference, but a complete review of all prevailing variants is recommended prior to use. <a href="#">More info</a></p>
<b>OTI Annotation:</b>	<p>This clone was engineered to express the complete ORF with an expression tag. Expression varies depending on the nature of the gene.</p>
<b>Components:</b>	<p>The ORF clone is ion-exchange column purified and shipped in a 2D barcoded Matrix tube containing 10ug of transfection-ready, dried plasmid DNA (reconstitute with 100 ul of water).</p>
<b>Reconstitution Method:</b>	<ol style="list-style-type: none"> <li>1. Centrifuge at 5,000xg for 5min.</li> <li>2. Carefully open the tube and add 100ul of sterile water to dissolve the DNA.</li> <li>3. Close the tube and incubate for 10 minutes at room temperature.</li> <li>4. Briefly vortex the tube and then do a quick spin (less than 5000xg) to concentrate the liquid at the bottom.</li> <li>5. Store the suspended plasmid at -20°C. The DNA is stable for at least one year from date of shipping when stored at -20°C.</li> </ol>
<b>RefSeq:</b>	<p><a href="#">NM_008357.1</a></p>
<b>RefSeq Size:</b>	<p>1297 bp</p>
<b>RefSeq ORF:</b>	<p>489 bp</p>
<b>Locus ID:</b>	<p>16168</p>
<b>UniProt ID:</b>	<p><a href="#">P48346</a></p>
<b>Cytogenetics:</b>	<p>8 39.33 cM</p>
<b>Gene Summary:</b>	<p>This gene encodes a a pleiotropic cytokine of the interleukin family of proteins that plays important roles in the innate and adaptive cell homeostasis, as well as peripheral immune function. The encoded protein undergoes proteolytic processing to generate a mature cytokine that stimulates the proliferation of natural killer cells. The transgenic mice overexpressing the encoded protein exhibit an increase in the number of memory CD8+ T cells in a naive state and enhanced protection against bacterial infections. Mice lacking the encoded protein exhibit impaired protection against a strain of attenuated Mycobacterium. [provided by RefSeq, Aug 2016]</p>

Product images:



Circular map for MR201274L3



Double digestion of MR201274L3 using SgfI and MluI