

Product datasheet for MR201254

Tmem159 (NM_145586) Mouse Tagged ORF Clone

Product data:

Product Type: Expression Plasmids
Product Name: Tmem159 (NM_145586) Mouse Tagged ORF Clone
Tag: Myc-DDK
Symbol: Tmem159
Synonyms: 8430420C20Rik
Mammalian Cell Selection: Neomycin
Vector: pCMV6-Entry (PS100001)
E. coli Selection: Kanamycin (25 ug/mL)
ORF Nucleotide Sequence: >MR201254 representing NM_145586
Red=Cloning site Blue=ORF Green=Tags(s)

TTTTGTAATACGACTCACTATAGGGCGGCCGGAATTCGTCGACTGGATCCGGTACCGAGGAGATCTGCC
GCC**CGATCGCC**

ATGGCCAAAGAAGAGCCCCGAGTGTCTCCAGAGACTTACAGGAGCTGCAAAGGAAGCTGGGTTTGCTGT
TAGAGTCTTTCTGAATAACTCAAAGGTGGTTGCCTTTATGAAGTCCCCGGTGGGCCGTTCTGGACAG
ACATCCTTTGTGACTCTCACCGTGTGATGTTTGTACCATGTCAGCCATCCCTGTTGGCTTCTCCTG
CTCATCGTGGTGTCTCACCTCGTGGTGTCTCATGGGGCCATATTATTGGAAGGTCTGGTCATCTCAG
TTTGTGGTCTCTCACTTCTCTGCGTCTCTGTGGCCTGGGCTTCTGTCACTTGCCTTGTGGGGATAGC
CATGATGTCCTATGTGGTGGTCTCCTGCCTCATGAGCTACTGGTTTTCTCCAGCAGGCCACTGACACAG
CAAATGCCAACGTCGACTGTCAGCTGGCTATGAAGTTCACGGAGTCTGAGAGGCTCATATTT

ACGCGTACGCGGCCGCTCGAGCAGAACTCATCTCAGAAGAGGATCTGGCAGCAAATGATATCCTGGATT
ACAAGGATGACGACGATAAGGTTTAA

Protein Sequence: >MR201254 representing NM_145586
Red=Cloning site Green=Tags(s)
MAKEEPPSVSRDLQELQRKLGLLLESFLNNSKVAVFMKSPVGRFLDRHPFVTLTVLMFVTMSAIPVGFLL
LIVVLTSLGALMGAILLEGLVISVCGLSLLCVLCGLGFLSLALSGIAMMSYVVVSVCLMSYWFSPSRPLTQ
QANAVDCQLAMKFTESERLIF

TRTRPLEQKLISEEDLAANDILDYKDDDDKV

Chromatograms: https://cdn.origene.com/chromatograms/mm9026_h04.zip



[View online »](#)

Restriction Sites: SgfI-MluI

Cloning Scheme:



ACCN: NM_145586

ORF Size: 483 bp

OTI Disclaimer: The molecular sequence of this clone aligns with the gene accession number as a point of reference only. However, individual transcript sequences of the same gene can differ through naturally occurring variations (e.g. polymorphisms), each with its own valid existence. This clone is substantially in agreement with the reference, but a complete review of all prevailing variants is recommended prior to use. [More info](#)

OTI Annotation: This clone was engineered to express the complete ORF with an expression tag. Expression varies depending on the nature of the gene.

Components: The ORF clone is ion-exchange column purified and shipped in a 2D barcoded Matrix tube containing 10ug of transfection-ready, dried plasmid DNA (reconstitute with 100 ul of water).

Reconstitution Method:

1. Centrifuge at 5,000xg for 5min.
2. Carefully open the tube and add 100ul of sterile water to dissolve the DNA.
3. Close the tube and incubate for 10 minutes at room temperature.
4. Briefly vortex the tube and then do a quick spin (less than 5000xg) to concentrate the liquid at the bottom.
5. Store the suspended plasmid at -20°C. The DNA is stable for at least one year from date of shipping when stored at -20°C.

RefSeq: [NM_145586.1](#), [NP_663561.1](#)

RefSeq Size: 1427 bp

RefSeq ORF: 486 bp

Locus ID: 233806

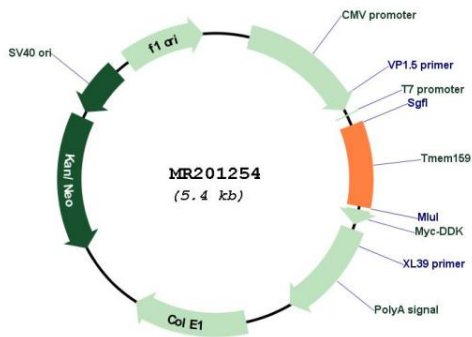
UniProt ID: [Q922Z1](#)

Cytogenetics: 7 F2

MW: 18.1 kDa

Gene Summary: Plays an important role in the formation of lipid droplets (LD) which are storage organelles at the center of lipid and energy homeostasis (By similarity). In association with BSCL2/seipin, defines the sites of LD formation in the endoplasmic reticulum (By similarity). [UniProtKB/Swiss-Prot Function]

Product images:



Circular map for MR201254