

Product datasheet for MR201203

Acp1 (BC093527) Mouse Tagged ORF Clone

Product data:

Product Type: Expression Plasmids
Product Name: Acp1 (BC093527) Mouse Tagged ORF Clone
Tag: Myc-DDK
Symbol: Acp1
Synonyms: 4632432E04Rik; Acp-1; AI427468; Lmptp; LMW-PTP
Mammalian Cell Selection: Neomycin
Vector: pCMV6-Entry (PS100001)
E. coli Selection: Kanamycin (25 ug/mL)
ORF Nucleotide Sequence: >MR201203 ORF sequence
 Red=Cloning site Blue=ORF Green=Tags(s)

TTTTGTAATACGACTCACTATAGGGCGGCCGGAATTCGTCGACTGGATCCGGTACCGAGGAGATCTGCC
 GCC**CGATCGCC**

ATGGCAGAGGTTGGGTCCAAGTCAGTGCTGTTCTGTGTCTCGGTAACATTTGCCGGTCACCCATTGCAG
 AAGCAGTATTCAGGAACTGGTAACTGATGAAAAGTTTCAGATAAATGGGCCATTGACAGCAGCGCCGT
 TTCGACTGGAACGTGGCCGGCCCCAGACCCAAGAGCTGTCAGCTGCCTAAGAAATCATGGCATTAGC
 ACAGCCCATAAGGCAAGACAGATTACAAAAGAAGACTTTGCCACATTCGATTATATACTATGTATGGATG
 AAAGCAATCTGAGAGATCTCAATAGAAAAAGTAATCAAGTAAAAACTGCAAAGCTAAAAATTGAGCTACT
 TGGGAGCTATGATCCACAGAAACAGCTCATCATTGAAGATCCCTATTATGGCAATGACTCTGACTTCGAG
 GTGGTGTACCAGCAATGCCTTAGGTGCTGCAAGGCCTTCTGGAGAAGACTTAC

ACGCGTACGCGGCCGCTCGAGCAGAACTCATCTCAGAAGAGGATCTGGCAGCAAATGATATCCTGGATT
 ACAAGGATGACGACGATAAGGTTTAA

Protein Sequence: >MR201203 protein sequence
 Red=Cloning site Green=Tags(s)

MAEVGSKSVL FVCLGNICRSPIAEAVFRKLV TDEKVS DNWAIDSSAVSDWNVGRPPDPRAVSCLRNHGIS
 TAHKARQITKEDFATFDYILCMDES NLRDLNRKSNQVKNCKAKIELLGSYDPQKQLIIEDPYYGNDSDFE
 VVYQQCLRCKAFLEKTY

TRTRPLEQKLI SEEDLAANDILDYKDDDDKV

Restriction Sites: Sgfl-MluI



[View online »](#)

Cloning Scheme:


ACCN: BC093527

ORF Size: 474 bp

OTI Disclaimer: The molecular sequence of this clone aligns with the gene accession number as a point of reference only. However, individual transcript sequences of the same gene can differ through naturally occurring variations (e.g. polymorphisms), each with its own valid existence. This clone is substantially in agreement with the reference, but a complete review of all prevailing variants is recommended prior to use. [More info](#)

OTI Annotation: This clone was engineered to express the complete ORF with an expression tag. Expression varies depending on the nature of the gene.

Components: The ORF clone is ion-exchange column purified and shipped in a 2D barcoded Matrix tube containing 10ug of transfection-ready, dried plasmid DNA (reconstitute with 100 ul of water).

Reconstitution Method:

1. Centrifuge at 5,000xg for 5min.
2. Carefully open the tube and add 100ul of sterile water to dissolve the DNA.
3. Close the tube and incubate for 10 minutes at room temperature.
4. Briefly vortex the tube and then do a quick spin (less than 5000xg) to concentrate the liquid at the bottom.
5. Store the suspended plasmid at -20°C. The DNA is stable for at least one year from date of shipping when stored at -20°C.

RefSeq: [BC093527](#), [AAH93527](#)

RefSeq Size: 1412 bp

RefSeq ORF: 476 bp

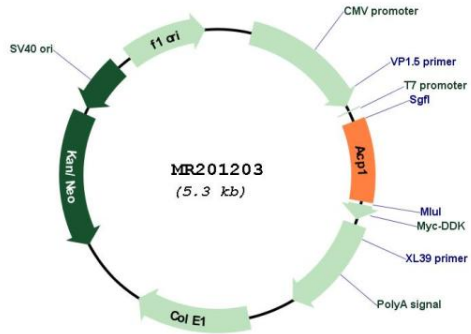
Locus ID: 11431

Cytogenetics: 12 A2

MW: 17.9 kDa

Gene Summary: Acts on tyrosine phosphorylated proteins, low-MW aryl phosphates and natural and synthetic acyl phosphates.[UniProtKB/Swiss-Prot Function]

Product images:



Circular map for MR201203