

## Product datasheet for MR201198

### Dbnnd2 (NM\_001048227) Mouse Tagged ORF Clone

#### Product data:

**Product Type:** Expression Plasmids  
**Product Name:** Dbnnd2 (NM\_001048227) Mouse Tagged ORF Clone  
**Tag:** Myc-DDK  
**Symbol:** Dbnnd2  
**Synonyms:** 1110017A21Rik; 2900022J10Rik; AU041050; AW048677; D2Bwg0891e; Nkip; R74724  
**Mammalian Cell Selection:** Neomycin  
**Vector:** pCMV6-Entry (PS100001)  
**E. coli Selection:** Kanamycin (25 ug/mL)  
**ORF Nucleotide Sequence:** >MR201198 ORF sequence  
 Red=Cloning site Blue=ORF Green=Tags(s)

TTTTGTAATACGACTCACTATAGGGCGGCCGGAATTCGTCGACTGGATCCGGTACCGAGGAGATCTGCC  
 GCC**CGATCGCC**

ATGGACCCAAATCCTCGAGCAGCCCTGGAGCGCCAACAGCTGCGGCTCCGGGAGAGGCAGAAGTTCTTTG  
 AGGACATTTTACAGCCAGAGACAGAGTTTGTCTTCCCCGTCCCATCTGCACCTGGAGTCACAAAGACC  
 CCCCATAGGTAGCATCTCGTCTATGGAAGTGAATGTGGACACACTGGAGCAAGTGGAGTTTATTGATCTT  
 GCGGATCAGGATGGAGCAGATGTGTTCTTGCTTGTGAGGAGTCTCGCCAGCTCCCAGATGTCTGGAG  
 TGGATGACCATCCAGAGGAGCTGAGCCTGCTGGTACCCACGTCTGACAGGACCACATCCCGACCTCCTC  
 TTGTCTCTGACTCCTCAACCTGCGCAGTCCAAATCCAAGTATGGGGGAGGAGACACTCCCTTGCCA  
 CAGTCTGATGAGGAGGACGGGGATGACGGAGGGGCAGAGCCTGGACCCTGCAGC

**ACGCGT**ACGCGGCCGCTCGAGCAGAACTCATCTCAGAAGAGGATCTGGCAGCAAATGATATCCTGGATT  
 ACAAGGATGACGACGATAAGGTTTAA

**Protein Sequence:** >MR201198 protein sequence  
 Red=Cloning site Green=Tags(s)

MDPNPRAALERQQLRLRERQKFFEDILQPETEFVPLSHLHLESQRPPIGSISSMEVNVDTLEQVEFIDL  
 ADQDGADVFLPCEESSPAPQMSGVDDHPEELSLLVPTSDRTTSRTSSLSSDSSNLRSPNPSDGGGDTPLA  
 QSDEEDGDDGGAEPGCS

**TR**TRPLEQKLISEEDLAANDILDYKDDDDKV

**Restriction Sites:** Sgfl-MluI



[View online »](#)

**Cloning Scheme:**


**ACCN:** NM\_001048227

**ORF Size:** 477 bp

**OTI Disclaimer:** The molecular sequence of this clone aligns with the gene accession number as a point of reference only. However, individual transcript sequences of the same gene can differ through naturally occurring variations (e.g. polymorphisms), each with its own valid existence. This clone is substantially in agreement with the reference, but a complete review of all prevailing variants is recommended prior to use. [More info](#)

**OTI Annotation:** This clone was engineered to express the complete ORF with an expression tag. Expression varies depending on the nature of the gene.

**Components:** The ORF clone is ion-exchange column purified and shipped in a 2D barcoded Matrix tube containing 10ug of transfection-ready, dried plasmid DNA (reconstitute with 100 ul of water).

**Reconstitution Method:**

1. Centrifuge at 5,000xg for 5min.
2. Carefully open the tube and add 100ul of sterile water to dissolve the DNA.
3. Close the tube and incubate for 10 minutes at room temperature.
4. Briefly vortex the tube and then do a quick spin (less than 5000xg) to concentrate the liquid at the bottom.
5. Store the suspended plasmid at -20°C. The DNA is stable for at least one year from date of shipping when stored at -20°C.

**RefSeq:** [NM\\_001048227.1](#), [NP\\_001041692.1](#)

**RefSeq Size:** 3577 bp

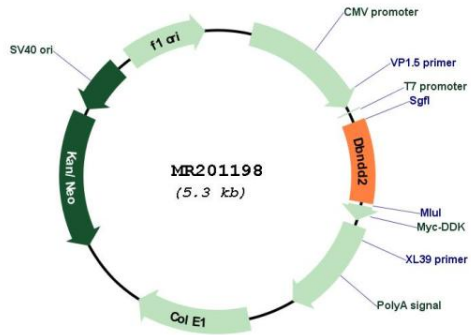
**RefSeq ORF:** 477 bp

**Locus ID:** 52840

**UniProt ID:** [Q9CRD4](#)

**Cytogenetics:** 2 85.17 cM  
**MW:** 17.2 kDa  
**Gene Summary:** May modulate the activity of casein kinase-1. Inhibits CSNK1D autophosphorylation (in vitro) (By similarity).[UniProtKB/Swiss-Prot Function]

**Product images:**



Circular map for MR201198