

Product datasheet for MR201176

Nap115 (NM_021432) Mouse Tagged ORF Clone

Product data:

Product Type: Expression Plasmids
Product Name: Nap115 (NM_021432) Mouse Tagged ORF Clone
Tag: Myc-DDK
Symbol: Nap115
Synonyms: 1110020M21Rik
Mammalian Cell Selection: Neomycin
Vector: pCMV6-Entry (PS100001)
E. coli Selection: Kanamycin (25 ug/mL)
ORF Nucleotide Sequence: >MR201176 ORF sequence
Red=Cloning site Blue=ORF Green=Tags(s)

TTTTGTAATACGACTCACTATAGGGCGCCGGGAATTCGTCGACTGGATCCGGTACCGAGGAGATCTGCC
GCC**CGATCGCC**

ATGGCCGACCCCGAGAAGCAGGGACCCGCTGAGAGCCGCGCCGAGGACGAGGTAATGGAAGGCGCCAGG
GTGGCGAAGATGCCGCGACCGGTGACAGTGCCGCTGCTCCCGCGCCGAGGAGCCCCAGGCCCGCGGA
GAACGCGCCCAAGCCAAAAAGACTTTATGGAGAGCTTGCCCAATTCGTGAAATGCCGGTTCTGGCG
CTCAAAAAGCTGCAGAAGCGCTGCGATAAGATCGAGGCCAAGTTTGACAAGGAATTCAGGCTCTGGAGA
AGAAGTACAACGATATCTACAAGCCCTGCTCGCCAAGATCCAGGAGCTCACCGAGAGATGGAGGGCTG
CGCGTGGACCCTGGAGGGAGAGGATGATGAAGATGACGAGGAAGAGGACGACGAGGAGGAGGAGGAA
GAAGAGGCTGCAGCTGGCGCAACTGGGGTCCCAACTCGCCAAGAAG

ACGCGTACGCGGCCGCTCGAGCAGAACTCATCTCAGAAGAGGATCTGGCAGCAAATGATATCCTGGATT
ACAAGGATGACGACGATAAGGTTTAA

Protein Sequence: >MR201176 protein sequence
Red=Cloning site Green=Tags(s)

MADPEKQGPAESRAEDEVMEGAQGGEDAATGDSAAAPAAEPPQAPAEANAPKPKKDFMESLPNSVKRVL
LKKLQKRCDKIEAKFDKEFQALEKKYNDIYKPLLAKIQELTGEMEGCAWTLEGEDDEDDEEEDDEEEEEE
EEAAAGATGGPNFAKK

TRTRPLEQKLISEEDLAANDILDYKDDDDKV

Restriction Sites: Sgfl-MluI



[View online »](#)

Cloning Scheme:


ACCN: NM_021432

ORF Size: 471 bp

OTI Disclaimer: The molecular sequence of this clone aligns with the gene accession number as a point of reference only. However, individual transcript sequences of the same gene can differ through naturally occurring variations (e.g. polymorphisms), each with its own valid existence. This clone is substantially in agreement with the reference, but a complete review of all prevailing variants is recommended prior to use. [More info](#)

OTI Annotation: This clone was engineered to express the complete ORF with an expression tag. Expression varies depending on the nature of the gene.

Components: The ORF clone is ion-exchange column purified and shipped in a 2D barcoded Matrix tube containing 10ug of transfection-ready, dried plasmid DNA (reconstitute with 100 ul of water).

- Reconstitution Method:**
1. Centrifuge at 5,000xg for 5min.
 2. Carefully open the tube and add 100ul of sterile water to dissolve the DNA.
 3. Close the tube and incubate for 10 minutes at room temperature.
 4. Briefly vortex the tube and then do a quick spin (less than 5000xg) to concentrate the liquid at the bottom.
 5. Store the suspended plasmid at -20°C. The DNA is stable for at least one year from date of shipping when stored at -20°C.

RefSeq: [NM_021432.2](#)

RefSeq Size: 1909 bp

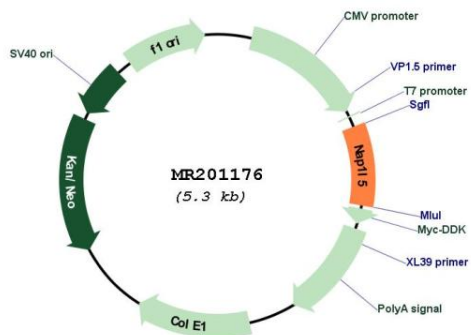
RefSeq ORF: 471 bp

Locus ID: 58243

UniProt ID: [Q9JIF0](#)

Cytogenetics: 6 B3
 MW: 17 kDa

Product images:



Circular map for MR201176