

Product datasheet for MR201173

Rpl23a (BC029892) Mouse Tagged ORF Clone

Product data:

Product Type: Expression Plasmids
Product Name: Rpl23a (BC029892) Mouse Tagged ORF Clone
Tag: Myc-DDK
Symbol: Rpl23a
Synonyms: MDA20, MGC36820
Mammalian Cell Selection: Neomycin
Vector: pCMV6-Entry (PS100001)
E. coli Selection: Kanamycin (25 ug/mL)
ORF Nucleotide Sequence: >MR201173 ORF sequence
 Red=Cloning site Blue=ORF Green=Tags(s)

TTTTGTAATACGACTCACTATAGGGCGGCCGGAATTCGTCGACTGGATCCGGTACCGAGGAGATCTGCC
 GCC**CGATCGCC**

ATGGCGCCGAAAGCGAAGAAGGAAGCTCCTGCCCTCCCAAAGCCGAAGCCAAAGCGAAGGCCTTAAAG
 CTAGAAGGCGGTGCTGAAAGGCGTCCACAGCCACAAAAGAAGAAGATCCGAACGTACCCACCTCCG
 GCGGCCAAGACCCTGCGGCTCCGAGGCAGCCAAAATATCCTCGGAAGAGTGCGCCAGGAGAAACAAG
 CTTGACCACTATGCTATCATCAAATCCCACTGACCACGGAGTCAGCCATGAAGAAAATAGAGGACAACA
 ACACTCTGTGTTCAATTGTGGATGTCAAGGCCAATAAGCATCAGATCAAACAGGCTGTCAAGAACTCTA
 TGACATCGATGTGCCAAAGTCAATACCCTGATAAGGCCGACGGAGAGAGAAGAAGCGTATGTTTCGTTG
 GCTCCTGATTATGATGCCCTAGATGTTGCCAACAGATTGGGATCATC

ACGCGTACGCGGCCGCTCGAGCAGAACTCATCTCAGAAGAGGATCTGGCAGCAAATGATATCCTGGATT
 ACAAGGATGACGACGATAAGGTTTAA

Protein Sequence: >MR201173 protein sequence
 Red=Cloning site Green=Tags(s)

MAPKAKKEAPAPPKAEAKAKALKAKKAVLKGVHSHKKKIRTSPTRRPKTLRLRRQPKYPRKSAPRRNK
 LDHYAIKFLPTTESAMKKIEDNNTLVFIVDVKANKHQIKQAVKLYDIDVAKVNTLIRPDGEKKAYVRL
 APDYDALDVANKIGII

TRTRPLEQKLISEEDLAANDILDYKDDDDKV

Restriction Sites: SgfI-MluI



Cloning Scheme:


ACCN: BC029892

ORF Size: 468 bp

OTI Disclaimer: The molecular sequence of this clone aligns with the gene accession number as a point of reference only. However, individual transcript sequences of the same gene can differ through naturally occurring variations (e.g. polymorphisms), each with its own valid existence. This clone is substantially in agreement with the reference, but a complete review of all prevailing variants is recommended prior to use. [More info](#)

OTI Annotation: This clone was engineered to express the complete ORF with an expression tag. Expression varies depending on the nature of the gene.

Components: The ORF clone is ion-exchange column purified and shipped in a 2D barcoded Matrix tube containing 10ug of transfection-ready, dried plasmid DNA (reconstitute with 100 ul of water).

- Reconstitution Method:**
1. Centrifuge at 5,000xg for 5min.
 2. Carefully open the tube and add 100ul of sterile water to dissolve the DNA.
 3. Close the tube and incubate for 10 minutes at room temperature.
 4. Briefly vortex the tube and then do a quick spin (less than 5000xg) to concentrate the liquid at the bottom.
 5. Store the suspended plasmid at -20°C. The DNA is stable for at least one year from date of shipping when stored at -20°C.

RefSeq: [BC029892](#), [AAH29892](#)

RefSeq Size: 531 bp

RefSeq ORF: 470 bp

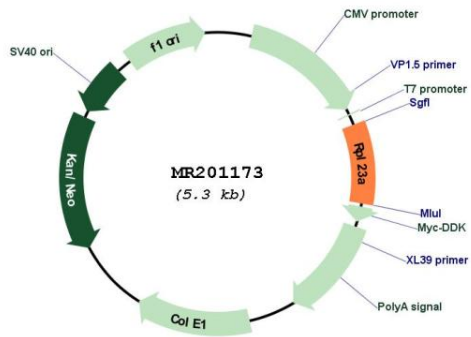
Locus ID: 268449

Cytogenetics: 11 B5

MW: 17.7 kDa

Gene Summary: Component of the ribosome, a large ribonucleoprotein complex responsible for the synthesis of proteins in the cell. Binds a specific region on the 26S rRNA (By similarity). May promote p53/TP53 degradation possibly through the stimulation of MDM2-mediated TP53 polyubiquitination (By similarity).[UniProtKB/Swiss-Prot Function]

Product images:



Circular map for MR201173