

## Product datasheet for MR201141

### Mall (NM\_145532) Mouse Tagged ORF Clone

#### Product data:

Product Type: Expression Plasmids  
 Product Name: Mall (NM\_145532) Mouse Tagged ORF Clone  
 Tag: Myc-DDK  
 Symbol: Mall  
 Synonyms: BC012256; BENE  
 Mammalian Cell Selection: Neomycin  
 Vector: pCMV6-Entry (PS100001)  
 E. coli Selection: Kanamycin (25 ug/mL)  
 ORF Nucleotide Sequence: >MR201141 ORF sequence  
 Red=Cloning site Blue=ORF Green=Tags(s)

TTTTGTAATACGACTCACTATAGGGCGGCCGGAATTCGTCGACTGGATCCGGTACCGAGGAGATCTGCC  
 GCC**CGGATCGCC**

ATGGCCTCCCGGGACACACCGCCGCCACCAGCTACGCCCGCCTGACGTGCCCTCGGGGTGCGCCCT  
 TGTTCTCACCATCCCCTTTGCCTTCTTCTACCGGAGCTGGTGTTCGGTTCTGGGTGTGGACTCTGGT  
 GGCTGCTACACACGTCGCATACCCCTTGCTGCAGGGATGGGTGCTGTATGTCTCCCTCACCTCCTTTCTC  
 ATCTCCTTGATGTTCTGATGTCCTACTGTTTGGGTTTACAAACGATTTGAGTCCTGGAGAGTCTCGG  
 ACAGCCTGTACCATGGCACCACAGGCATTTTGTACATGAGTGCCTCTGCTCCTGCAAGCATATGCCACCAT  
 CATTTCTGAGGGCCACAACCTGAGCCACTACTACATCAATGTTGCAGCCTCGTTCTTCGCTTCTCACT  
 AACTGCTCTATATCCTGCACGCTTTCAGCATCTATTACCAC

**ACGCGT**ACGCGGCCGCTCGAGCAGAACTCATCTCAGAAGAGGATCTGGCAGCAAATGATATCCTGGATT  
 ACAAGGATGACGACGATAAGGTTTAA

Protein Sequence: >MR201141 protein sequence  
 Red=Cloning site Green=Tags(s)

MASRDTPPATSYAPPDVPSGVAALFLTIPFAFFLPELVFGFWVWTLVAATHVAYPLLQGWVLYVSLTSFL  
 ISLMFLMSYLFYKRFESWRVLDLSYHGTTGILYMSASVLQAYATIISEGHNLSHYYINVAASFFAFLT  
 TLLYILHAFSIYYH

**TR**TRPLEQKLISEEDLAANDILDYKDDDDKV

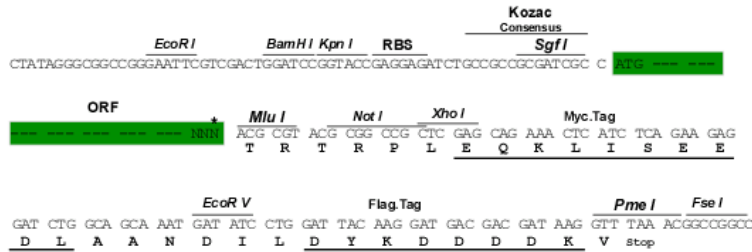
Restriction Sites: Sgfl-MluI



[View online »](#)

**Cloning Scheme:**

Cloning sites used for ORF Shutting:



\* The last codon before the Stop codon of the ORF

**ACCN:** NM\_145532

**ORF Size:** 465 bp

**OTI Disclaimer:** The molecular sequence of this clone aligns with the gene accession number as a point of reference only. However, individual transcript sequences of the same gene can differ through naturally occurring variations (e.g. polymorphisms), each with its own valid existence. This clone is substantially in agreement with the reference, but a complete review of all prevailing variants is recommended prior to use. [More info](#)
**OTI Annotation:** This clone was engineered to express the complete ORF with an expression tag. Expression varies depending on the nature of the gene.

**Components:** The ORF clone is ion-exchange column purified and shipped in a 2D barcoded Matrix tube containing 10ug of transfection-ready, dried plasmid DNA (reconstitute with 100 ul of water).

**Reconstitution Method:**

1. Centrifuge at 5,000xg for 5min.
2. Carefully open the tube and add 100ul of sterile water to dissolve the DNA.
3. Close the tube and incubate for 10 minutes at room temperature.
4. Briefly vortex the tube and then do a quick spin (less than 5000xg) to concentrate the liquid at the bottom.
5. Store the suspended plasmid at -20°C. The DNA is stable for at least one year from date of shipping when stored at -20°C.

**RefSeq:** [NM\\_145532.1](#)
**RefSeq Size:** 1967 bp

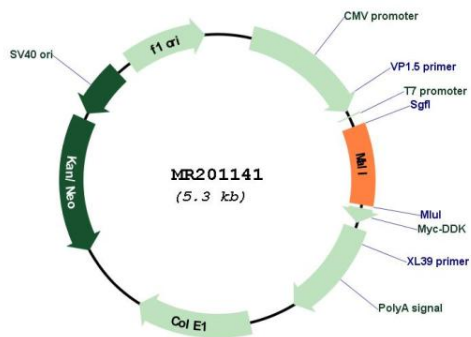
**RefSeq ORF:** 465 bp

**Locus ID:** 228576

**UniProt ID:** [Q91X49](#)

Cytogenetics: 2 F1  
 MW: 17.5 kDa

**Product images:**



Circular map for MR201141