

## Product datasheet for MR201052

### Calm3 (NM\_007590) Mouse Tagged ORF Clone

#### Product data:

**Product Type:** Expression Plasmids  
**Product Name:** Calm3 (NM\_007590) Mouse Tagged ORF Clone  
**Tag:** Myc-DDK  
**Symbol:** Calm3  
**Synonyms:** Cam3; CaMA; Camc; R75142  
**Mammalian Cell Selection:** Neomycin  
**Vector:** pCMV6-Entry (PS100001)  
**E. coli Selection:** Kanamycin (25 ug/mL)  
**ORF Nucleotide Sequence:** >MR201052 ORF sequence  
Red=Cloning site Blue=ORF Green=Tags(s)

TTTTGTAATACGACTCACTATAGGGCGGCCGGAATTCGTCGACTGGATCCGGTACCGAGGAGATCTGCC  
GCC**CGATCGCC**

ATGGCTGACCAGCTGACTGAGGAACAGATTGCAGAGTTCAAGGAAGCCTTCTCCCTCTTCGACAAGGATG  
GAGATGGCACCATTACCACCAAGGAGCTGGGGACTGTGATGAGATCGCTGGGACAGAACCCCACTGAGGC  
GGAGCTGCAGGACATGATTAATGAGGTGGATGCTGATGGCAATGGGACATTGACTTCCCAGAGTCTTG  
ACCATGATGGCCAGAAAGATGAAGGATACAGACAGCGAGGAGGAGATACGAGAGGCCTCCGTGTCTTTG  
ACAAGGATGGGAATGGCTATATTAGCGTGCCGAGCTGCGTCACGTCATGACGAACCTGGGGGAGAAGCT  
GACAGATGAGGAAGTGGATGAGATGATCCGAGAGGCCGACATTGATGGAGATGGCCAGGTCAATTATGAA  
GAGTTTGTACAGATGATGACTGCCAAG

**ACGCGT**ACGCGGCCGCTCGAGCAGAACTCATCTCAGAAGAGGATCTGGCAGCAAATGATATCCTGGATT  
ACAAGGATGACGACGATAAGGTTTAA

**Protein Sequence:** >MR201052 protein sequence  
Red=Cloning site Green=Tags(s)

MADQLTEEQIAEFKEAFSLFDKDGDTITTKELGTVMRSLGQNPTEAELQDMINEVDADNGNTIDFPEFL  
TMMARKMKDTSDEEIEAIFRVFDKDGNGYISAAELRHVMTNLGEKLTDEEVDDEMIREADIDGDGQVNYE  
EFVQMMTAK

**TR**TRPLEQKLISEEDLAANDILDYKDDDDKV

**Restriction Sites:** Sgfl-MluI



[View online »](#)

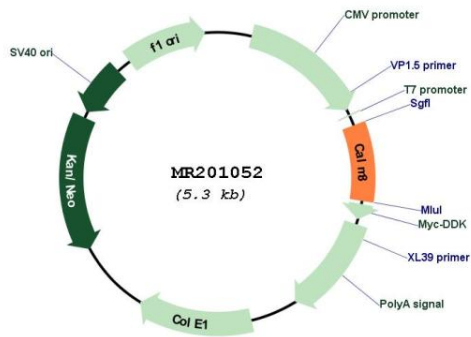


**Cytogenetics:** 7 9.15 cM

**MW:** 16.8 kDa

**Gene Summary:** Calmodulin mediates the control of a large number of enzymes, ion channels, aquaporins and other proteins through calcium-binding. Among the enzymes to be stimulated by the calmodulin-calcium complex are a number of protein kinases and phosphatases. Together with CCP110 and centrin, is involved in a genetic pathway that regulates the centrosome cycle and progression through cytokinesis. Mediates calcium-dependent inactivation of CACNA1C. Positively regulates calcium-activated potassium channel activity of KCNN2.[UniProtKB/Swiss-Prot Function]

**Product images:**



Circular map for MR201052