

Product datasheet for MR201051L2

Calm1 (NM_009790) Mouse Tagged Lenti ORF Clone

Product data:

Product Type:	Expression Plasmids
Product Name:	Calm1 (NM_009790) Mouse Tagged Lenti ORF Clone
Tag:	mGFP
Symbol:	Calm1
Synonyms:	AI256814; AI327027; AI461935; AL024000; Calm; CaM; Cam1
Mammalian Cell Selection:	None
Vector:	pLenti-C-mGFP (PS100071)
E. coli Selection:	Chloramphenicol (34 ug/mL)
ORF Nucleotide Sequence:	The ORF insert of this clone is exactly the same as(MR201051).
Restriction Sites:	SgfI-MluI
Cloning Scheme:	

Cloning sites used for ORF Shuttling:



* The last codon before the Stop codon of the ORF.

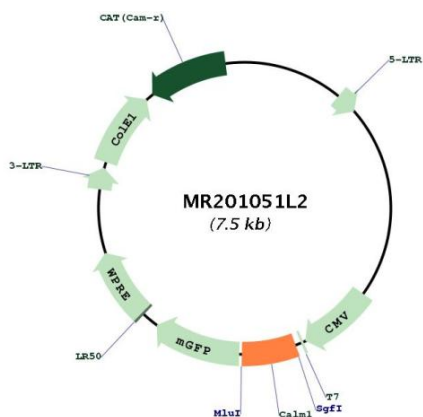
ACCN:	NM_009790
ORF Size:	450 bp



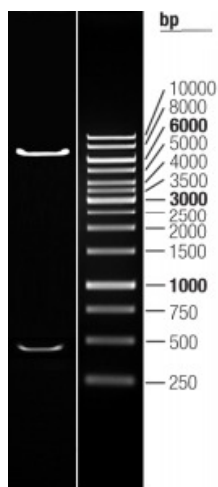
[View online »](#)

OTI Disclaimer:	The molecular sequence of this clone aligns with the gene accession number as a point of reference only. However, individual transcript sequences of the same gene can differ through naturally occurring variations (e.g. polymorphisms), each with its own valid existence. This clone is substantially in agreement with the reference, but a complete review of all prevailing variants is recommended prior to use. More info
OTI Annotation:	This clone was engineered to express the complete ORF with an expression tag. Expression varies depending on the nature of the gene.
Components:	The ORF clone is ion-exchange column purified and shipped in a 2D barcoded Matrix tube containing 10ug of transfection-ready, dried plasmid DNA (reconstitute with 100 ul of water).
Reconstitution Method:	<ol style="list-style-type: none">1. Centrifuge at 5,000xg for 5min.2. Carefully open the tube and add 100ul of sterile water to dissolve the DNA.3. Close the tube and incubate for 10 minutes at room temperature.4. Briefly vortex the tube and then do a quick spin (less than 5000xg) to concentrate the liquid at the bottom.5. Store the suspended plasmid at -20°C. The DNA is stable for at least one year from date of shipping when stored at -20°C.
RefSeq:	NM_009790.4
RefSeq Size:	4001 bp
RefSeq ORF:	450 bp
Locus ID:	12313
UniProt ID:	P0DP26
Cytogenetics:	12 E
Gene Summary:	This gene encodes a member of the EF-hand calcium-binding protein family. The encoded protein acts as a calcium sensor and is involved in relaying signals to calcium-sensitive proteins, enzymes and ion channels. The protein-calcium complex binds target proteins to regulate several cellular processes, including smooth muscle contraction, inflammation, apoptosis and the immune response. Mutations in the human gene are associated with catecholaminergic polymorphic ventricular tachycardia and long QT syndrome 14. Alternative splicing results in multiple transcript variants encoding different isoforms. [provided by RefSeq, Sep 2015]

Product images:



Circular map for MR201051L2



Double digestion of MR201051L2 using SgfI and MluI