

Product datasheet for MR201020

Ramp1 (NM_016894) Mouse Tagged ORF Clone

Product data:

Product Type: Expression Plasmids
Product Name: Ramp1 (NM_016894) Mouse Tagged ORF Clone
Tag: Myc-DDK
Symbol: Ramp1
Synonyms: 9130218E19Rik
Mammalian Cell Selection: Neomycin
Vector: pCMV6-Entry (PS100001)
E. coli Selection: Kanamycin (25 ug/mL)
ORF Nucleotide Sequence: >MR201020 ORF sequence
Red=Cloning site Blue=ORF Green=Tags(s)

TTTTGTAATACGACTCACTATAGGGCGGCCGGAATTCGTCGACTGGATCCGGTACCGAGGAGATCTGCC
GCC**CGATCGCC**

ATGGCCCCGGCCTGCGGGCCTCCCGCGGTGCGGCCTCTGGCTGCTGCTGGCTCACCATCTTTCATGG
TCACTGCCTGCCGGACCCTGACTATGGGACTCTCATCCAGGAGCTGTGCCTCAGCCGTTCAAGGAGAA
CATGGAGACTATTGGGAAGACGCTATGGTGTGACTGGGAAAGACCATACAGAGCTATGGGGAGCTCACT
TACTGCACCAAGCACGTGGCGCACAGATTGGCTGTTTCTGGCCCAATCCGGAAGTGACAGATTCTTCA
TCGCTGTCCACCATCGATACTTCAGCAAGTGCCCCATCTCGGGCAGGGCCCTGCGGGACCCTCCCAACAG
CATCCTCTGCCCTTTCATTGCGCTCCCCATTACGGTCACGCTGCTCATGACTGCACTGGTGGTCTGGAGG
AGCAAGCGCACAGAGGGCATCGTG

ACGCGTACGCGGCCGCTCGAGCAGAACTCATCTCAGAAGAGGATCTGGCAGCAAATGATATCCTGGATT
ACAAGGATGACGACGATAAGGTTTAA

Protein Sequence: >MR201020 protein sequence
Red=Cloning site Green=Tags(s)

MAPGLRGLPRCGLWLLL AHLLFMVTACRDPDYGTLIQELCLSRFKENMETIGKTLWCDWGKTIQSYGELT
YCTKHVAHTIGCFWPNPEVDRFFIAVHHRYFSKCPISGRALRDPNSILCPFIALPITVLLMTALVVWR
SKRTEGIV

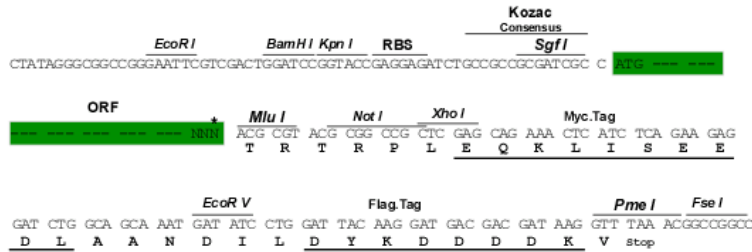
TRTRPLEQKLI SEEDLAANDILDYKDDDDKV

Restriction Sites: SgfI-MluI



Cloning Scheme:

Cloning sites used for ORF Shuttling:



* The last codon before the Stop codon of the ORF

ACCN: NM_016894

ORF Size: 447 bp

OTI Disclaimer: The molecular sequence of this clone aligns with the gene accession number as a point of reference only. However, individual transcript sequences of the same gene can differ through naturally occurring variations (e.g. polymorphisms), each with its own valid existence. This clone is substantially in agreement with the reference, but a complete review of all prevailing variants is recommended prior to use. [More info](#)
OTI Annotation: This clone was engineered to express the complete ORF with an expression tag. Expression varies depending on the nature of the gene.

Components: The ORF clone is ion-exchange column purified and shipped in a 2D barcoded Matrix tube containing 10ug of transfection-ready, dried plasmid DNA (reconstitute with 100 ul of water).

Reconstitution Method:

1. Centrifuge at 5,000xg for 5min.
2. Carefully open the tube and add 100ul of sterile water to dissolve the DNA.
3. Close the tube and incubate for 10 minutes at room temperature.
4. Briefly vortex the tube and then do a quick spin (less than 5000xg) to concentrate the liquid at the bottom.
5. Store the suspended plasmid at -20°C. The DNA is stable for at least one year from date of shipping when stored at -20°C.

RefSeq: [NM_016894.3](#)
RefSeq Size: 2549 bp

RefSeq ORF: 447 bp

Locus ID: 51801

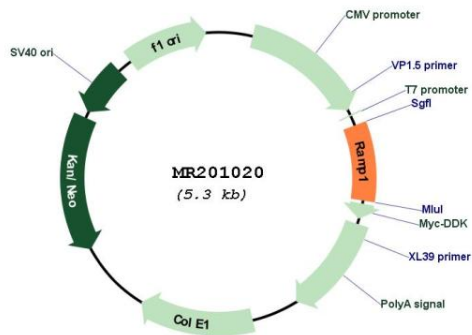
UniProt ID: [Q9WTJ5](#)

Cytogenetics: 1 46.08 cM

MW: 16.9 kDa

Gene Summary: Transports the calcitonin gene-related peptide type 1 receptor (CALCRL) to the plasma membrane. Acts as a receptor for calcitonin-gene-related peptide (CGRP) together with CALCRL.[UniProtKB/Swiss-Prot Function]

Product images:



Circular map for MR201020