

Product datasheet for MR200869L3

Sct (BC048484) Mouse Tagged Lenti ORF Clone

Product data:

Product Type:	Expression Plasmids
Product Name:	Sct (BC048484) Mouse Tagged Lenti ORF Clone
Tag:	Myc-DDK
Symbol:	Sct
Mammalian Cell Selection:	Puromycin
Vector:	pLenti-C-Myc-DDK-P2A-Puro (PS100092)
E. coli Selection:	Chloramphenicol (34 ug/mL)
ORF Nucleotide Sequence:	The ORF insert of this clone is exactly the same as(MR200869).
Restriction Sites:	Sgfl-MluI
Cloning Scheme:	

Cloning sites used for ORF Shuttling:



* The last codon before the Stop codon of the ORF.

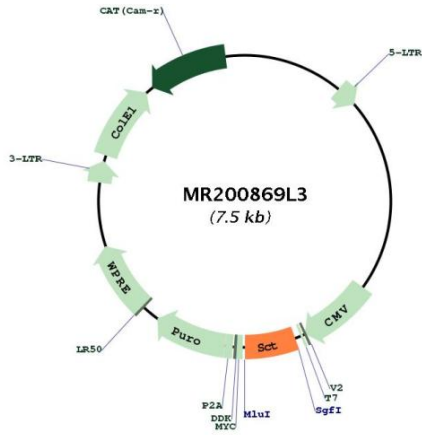
ACCN:	BC048484
ORF Size:	417 bp



[View online »](#)

OTI Disclaimer:	The molecular sequence of this clone aligns with the gene accession number as a point of reference only. However, individual transcript sequences of the same gene can differ through naturally occurring variations (e.g. polymorphisms), each with its own valid existence. This clone is substantially in agreement with the reference, but a complete review of all prevailing variants is recommended prior to use. More info
OTI Annotation:	This clone was engineered to express the complete ORF with an expression tag. Expression varies depending on the nature of the gene.
Components:	The ORF clone is ion-exchange column purified and shipped in a 2D barcoded Matrix tube containing 10ug of transfection-ready, dried plasmid DNA (reconstitute with 100 ul of water).
Reconstitution Method:	<ol style="list-style-type: none"> 1. Centrifuge at 5,000xg for 5min. 2. Carefully open the tube and add 100ul of sterile water to dissolve the DNA. 3. Close the tube and incubate for 10 minutes at room temperature. 4. Briefly vortex the tube and then do a quick spin (less than 5000xg) to concentrate the liquid at the bottom. 5. Store the suspended plasmid at -20°C. The DNA is stable for at least one year from date of shipping when stored at -20°C.
RefSeq:	BC048484.1
RefSeq Size:	564 bp
RefSeq ORF:	419 bp
Locus ID:	20287
Cytogenetics:	7 F5
Gene Summary:	This gene encodes the precursor of a gastrointestinal peptide hormone of the secretin-glucagon family. The encoded protein is secreted as a prohormone that undergoes proteolytic processing to generate a mature peptide hormone. The mature peptide regulates secretion of gastric acid, bicarbonate ions from pancreatic and biliary duct epithelia and water homeostasis in the gastrointestinal system. Mice lacking the encoded protein display decreased survival of neuroprogenitor cells during early postnatal period and impaired long-term potentiation and spatial learning in adulthood. Alternative splicing results in multiple transcript variants encoding different isoforms. All of these isoforms may be processed in a similar manner to generate the mature peptide hormone. [provided by RefSeq, Jul 2015]

Product images:



Circular map for MR200869L3