

## Product datasheet for **MR200761L4V**

### Cxcl5 (NM\_009141) Mouse Tagged ORF Clone Lentiviral Particle

#### Product data:

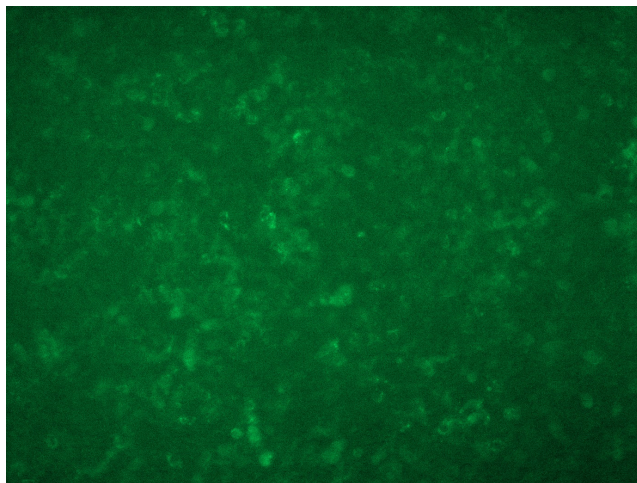
Product Type:	Lentiviral Particles
Product Name:	Cxcl5 (NM_009141) Mouse Tagged ORF Clone Lentiviral Particle
Symbol:	Cxcl5
Synonyms:	AMCF; AMCF-II; Cxcl; Cxcl6; ENA-; ENA-78; GCP-; GCP-2; L; LIX; Scyb; Scyb5; Scyb6
Mammalian Cell Selection:	Puromycin
Vector:	pLenti-C-mGFP-P2A-Puro (PS100093)
Tag:	mGFP
ACCN:	NM_009141
ORF Size:	396 bp
ORF Nucleotide Sequence:	The ORF insert of this clone is exactly the same as(MR200761).
OTI Disclaimer:	The molecular sequence of this clone aligns with the gene accession number as a point of reference only. However, individual transcript sequences of the same gene can differ through naturally occurring variations (e.g. polymorphisms), each with its own valid existence. This clone is substantially in agreement with the reference, but a complete review of all prevailing variants is recommended prior to use. <a href="#">More info</a>
OTI Annotation:	This clone was engineered to express the complete ORF with an expression tag. Expression varies depending on the nature of the gene.
RefSeq:	<a href="#">NM_009141.2</a>
RefSeq Size:	1655 bp
RefSeq ORF:	399 bp
Locus ID:	20311
UniProt ID:	<a href="#">P50228</a>
Cytogenetics:	5 44.78 cM



[View online »](#)

**Gene Summary:**

This gene encodes a protein that is a member of the CXC subfamily of chemokines. Chemokines, which recruit and activate leukocytes, are classified by function (inflammatory or homeostatic) or by structure. This protein is proposed to bind the G-protein coupled receptor chemokine (C-X-C motif) receptor 2 to recruit neutrophils and to have homeostatic and inflammatory functions. In mouse, deficiency of this gene is associated with increased lung inflammation that is neutrophil-dependent. [provided by RefSeq, May 2013]

**Product images:**

[MR200761L4] was used to prepare Lentiviral particles using [TR30037] packaging kit. HEK293T cells were transduced with MR200761L4V particle to overexpress human Cxcl5-mGFP fusion protein.