

Product datasheet for MR200750L3

Slpi (NM_011414) Mouse Tagged Lenti ORF Clone

Product data:

Product Type:	Expression Plasmids
Product Name:	Slpi (NM_011414) Mouse Tagged Lenti ORF Clone
Tag:	Myc-DDK
Symbol:	Slpi
Mammalian Cell Selection:	Puromycin
Vector:	pLenti-C-Myc-DDK-P2A-Puro (PS100092)
E. coli Selection:	Chloramphenicol (34 ug/mL)
ORF Nucleotide Sequence:	The ORF insert of this clone is exactly the same as(MR200750).
Restriction Sites:	Sgfl-MluI
Cloning Scheme:	

Cloning sites used for ORF Shuttling:



* The last codon before the Stop codon of the ORF.

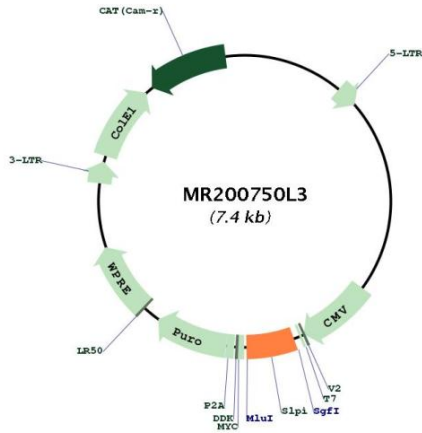
ACCN:	NM_011414
ORF Size:	396 bp



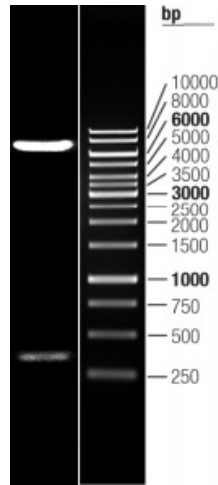
[View online »](#)

OTI Disclaimer:	The molecular sequence of this clone aligns with the gene accession number as a point of reference only. However, individual transcript sequences of the same gene can differ through naturally occurring variations (e.g. polymorphisms), each with its own valid existence. This clone is substantially in agreement with the reference, but a complete review of all prevailing variants is recommended prior to use. More info
OTI Annotation:	This clone was engineered to express the complete ORF with an expression tag. Expression varies depending on the nature of the gene.
Components:	The ORF clone is ion-exchange column purified and shipped in a 2D barcoded Matrix tube containing 10ug of transfection-ready, dried plasmid DNA (reconstitute with 100 ul of water).
Reconstitution Method:	<ol style="list-style-type: none">1. Centrifuge at 5,000xg for 5min.2. Carefully open the tube and add 100ul of sterile water to dissolve the DNA.3. Close the tube and incubate for 10 minutes at room temperature.4. Briefly vortex the tube and then do a quick spin (less than 5000xg) to concentrate the liquid at the bottom.5. Store the suspended plasmid at -20°C. The DNA is stable for at least one year from date of shipping when stored at -20°C.
RefSeq:	NM_011414.1
RefSeq Size:	894 bp
RefSeq ORF:	396 bp
Locus ID:	20568
UniProt ID:	P97430
Cytogenetics:	2 H3
Gene Summary:	Acid-stable proteinase inhibitor with strong affinities for trypsin, chymotrypsin, elastase, and cathepsin G (PubMed:9126337). Modulates the innate immune response after bacterial infection (PubMed:12615907). Contributes to regulate the inflammatory and immune responses to the intracellular parasite L.major (PubMed:25030421). Down-regulates responses to bacterial lipopolysaccharide (LPS) (PubMed:9039268, PubMed:12615907, PubMed:25030421). Plays a role in regulating the activation of NF-kappa-B and inflammatory responses (PubMed:11017147, PubMed:12615907). Has antimicrobial activity against mycobacteria, but not against salmonella (PubMed:18322212). Contributes to normal resistance against infection by M.tuberculosis (PubMed:18322212). Required for normal resistance to L.major (PubMed:25030421). Required for normal wound healing, probably by preventing tissue damage by limiting protease activity (PubMed:11017147, PubMed:25030421). Together with ELANE, required for normal differentiation and proliferation of bone marrow myeloid cells (By similarity).[UniProtKB/Swiss-Prot Function]

Product images:



Circular map for MR200750L3



Double digestion of MR200750L3 using SgfI and MluI