

Product datasheet for **MR200602**

Rpp14 (NM_025938) Mouse Tagged ORF Clone

Product data:

Product Type: Expression Plasmids
Product Name: Rpp14 (NM_025938) Mouse Tagged ORF Clone
Tag: Myc-DDK
Symbol: Rpp14
Synonyms: 2610511E03Rik; AA682089
Mammalian Cell Selection: Neomycin
Vector: pCMV6-Entry (PS100001)
E. coli Selection: Kanamycin (25 ug/mL)
ORF Nucleotide Sequence: >MR200602 ORF sequence
Red=Cloning site Blue=ORF Green=Tags(s)

TTTTGTAATACGACTCACTATAGGGCGCCGGAATTCGTCGACTGGATCCGGTACCGAGGAGATCTGCC
GCC**CGATCGCC**

ATGCCAGCGACTGCATATGAAAGAGTAGTTTACAAGAGCCCTCAGAGTATCACTACATGAAAGTCTGTC
TAGAGTTTCAAGAACATGGGTTGGACTGAACGTGGCACAGTTCAAACAGCTGCTCGTCTCAGCCCTGAG
AGACCTGTTTGGGAGGTGGTGGCGCTCTGCCTGTGGATGTTCTCACCTACGATGAGAAGACACTGTGC
GCCATCTTGAGAATATGCAGCAGTGGTCTGGTCAAATTATGGAGTCTTTGACCTGTTTGGAGCCTATA
AAAGCAAGAAGTGTGCCTTCAGAGTGATTCAGGTGTCTCCCTTCTCCTTGCATTATCTGGCAATAGCAG
GGAACAAGTATTGGAC

ACGCGTACGCGGCCGCTCGAGCAGAACTCATCTCAGAAGAGGATCTGGCAGCAAATGATATCCTGGATT
ACAAGGATGACGACGATAAGGTTTAA

Protein Sequence: >MR200602 protein sequence
Red=Cloning site Green=Tags(s)
MPATAYERVVYKSPSEYHYMKVCLFQEHGVLNVAQFKQLLVSALRDLFGEVGAALPVDVLTLYDEKTLK
AILRICSSGLVKLWSSLTLFGAYKSKKCAFRVIQVSPFLALSGNSREQVLD

TRTRPLEQKLISEEDLAANDILDYKDDDDKV

Restriction Sites: Sgfl-MluI



[View online »](#)

Cloning Scheme:


ACCN: NM_025938

ORF Size: 369 bp

OTI Disclaimer: The molecular sequence of this clone aligns with the gene accession number as a point of reference only. However, individual transcript sequences of the same gene can differ through naturally occurring variations (e.g. polymorphisms), each with its own valid existence. This clone is substantially in agreement with the reference, but a complete review of all prevailing variants is recommended prior to use. [More info](#)

OTI Annotation: This clone was engineered to express the complete ORF with an expression tag. Expression varies depending on the nature of the gene.

Components: The ORF clone is ion-exchange column purified and shipped in a 2D barcoded Matrix tube containing 10ug of transfection-ready, dried plasmid DNA (reconstitute with 100 ul of water).

- Reconstitution Method:**
1. Centrifuge at 5,000xg for 5min.
 2. Carefully open the tube and add 100ul of sterile water to dissolve the DNA.
 3. Close the tube and incubate for 10 minutes at room temperature.
 4. Briefly vortex the tube and then do a quick spin (less than 5000xg) to concentrate the liquid at the bottom.
 5. Store the suspended plasmid at -20°C. The DNA is stable for at least one year from date of shipping when stored at -20°C.

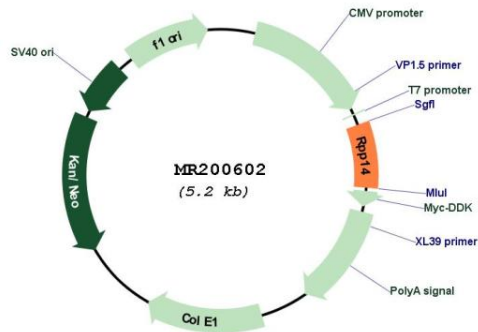
RefSeq: [NM_025938.4](#)

RefSeq Size: 2467 bp

RefSeq ORF: 369 bp

Locus ID: 67053

UniProt ID: [Q9CQH8](#)
Cytogenetics: 14 A1
MW: 13.6 kDa
Gene Summary: Component of ribonuclease P, a ribonucleoprotein complex that generates mature tRNA molecules by cleaving their 5'-ends.[UniProtKB/Swiss-Prot Function]

Product images:


Circular map for MR200602