

Product datasheet for **MR200028**

Polr2k (NM_023127) Mouse Tagged ORF Clone

Product data:

Product Type: Expression Plasmids
Product Name: Polr2k (NM_023127) Mouse Tagged ORF Clone
Tag: Myc-DDK
Symbol: Polr2k
Synonyms: ABC10-alpha; MafY; Mt1a; RPABC4; RPB7.0; RPB10alpha; RPB12
Mammalian Cell Selection: Neomycin
Vector: pCMV6-Entry (PS100001)
E. coli Selection: Kanamycin (25 ug/mL)
ORF Nucleotide Sequence: >MR200028 ORF sequence
Red=Cloning site Blue=ORF Green=Tags(s)

TTTTGTAATACGACTCACTATAGGGCGGCCGGAATTCGTCGACTGGATCCGGTACCGAGGAGATCTGCC
GCC**CGATCGCC**

ATGGACGCTCAGAAAGATGTTCAACCACCAAAGCAGCAGCCAATGATATATATTTGTGGAGAGTGTCA
CCGAAAATGAGATAAAGTCCAGGGATCCCATCAGATGCAGAGAATGTGGATACAGAATAATGTACAAGAA
AAGGACTAAAAGATTGGTGGTTTTTGATGCTCGA

ACGGTACGGCGCGCTCGAGCAGAAACTCATCTCAGAAGAGGATCTGGCAGCAAATGATATCCTGGATT
ACAAGGATGACGACGATAAGGTTTAA

Protein Sequence: >MR200028 protein sequence
Red=Cloning site Green=Tags(s)
MDAQKDVQPPKQQPMIYICGECHTENEIKSRDPIRCRECGYRIMYKKRTRKRLVVFAR
TRTRPLEQKLISEEDLAANDILDYKDDDDKV

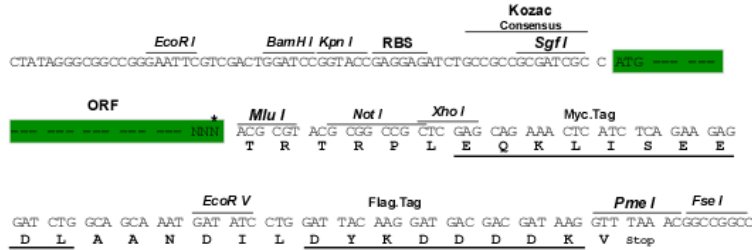
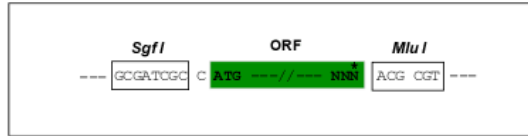
Restriction Sites: Sgfl-MluI



[View online »](#)

Cloning Scheme:

Cloning sites used for ORF Shuttling:



* The last codon before the Stop codon of the ORF

ACCN: NM_023127

ORF Size: 177 bp

OTI Disclaimer: The molecular sequence of this clone aligns with the gene accession number as a point of reference only. However, individual transcript sequences of the same gene can differ through naturally occurring variations (e.g. polymorphisms), each with its own valid existence. This clone is substantially in agreement with the reference, but a complete review of all prevailing variants is recommended prior to use. [More info](#)
OTI Annotation: This clone was engineered to express the complete ORF with an expression tag. Expression varies depending on the nature of the gene.

Components: The ORF clone is ion-exchange column purified and shipped in a 2D barcoded Matrix tube containing 10ug of transfection-ready, dried plasmid DNA (reconstitute with 100 ul of water).

Reconstitution Method:

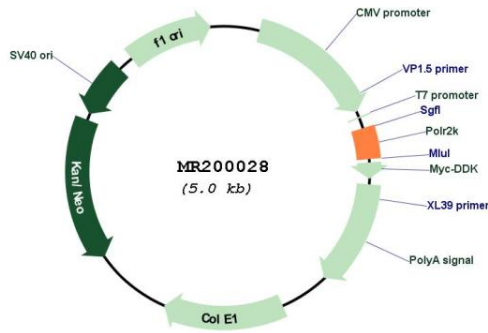
1. Centrifuge at 5,000xg for 5min.
2. Carefully open the tube and add 100ul of sterile water to dissolve the DNA.
3. Close the tube and incubate for 10 minutes at room temperature.
4. Briefly vortex the tube and then do a quick spin (less than 5000xg) to concentrate the liquid at the bottom.
5. Store the suspended plasmid at -20°C. The DNA is stable for at least one year from date of shipping when stored at -20°C.

RefSeq: [NM_023127.3](#)
RefSeq Size: 494 bp

RefSeq ORF: 177 bp
 Locus ID: 17749
 UniProt ID: [Q63871](#)
 Cytogenetics: 15 B3.1
 MW: 7 kDa

Gene Summary: DNA-dependent RNA polymerase catalyzes the transcription of DNA into RNA using the four ribonucleoside triphosphates as substrates. Common component of RNA polymerases I, II and III which synthesize ribosomal RNA precursors, mRNA precursors and many functional non-coding RNAs, and a small RNAs, such as 5S rRNA and tRNAs, respectively (By similarity). [UniProtKB/Swiss-Prot Function]

Product images:



Circular map for MR200028