

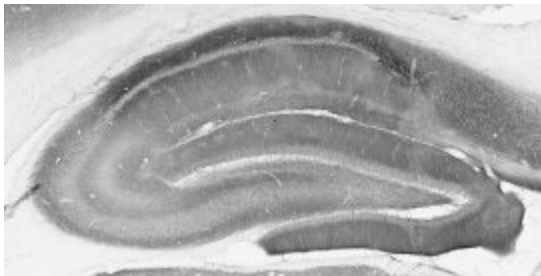
## Product datasheet for **MO50004-100**

### **Grm5 (824-1203) Mouse Monoclonal Antibody**

#### **Product data:**

Product Type:	Primary Antibodies
Applications:	IF, IHC, IP, WB
Reactivity:	Human, Mouse, Rat
Host:	Mouse
Isotype:	IgG1
Clonality:	Monoclonal
Formulation:	State: Supernatant
Gene Name:	glutamate metabotropic receptor 5
Database Link:	<a href="#">Entrez Gene 24418 Rat</a>
Synonyms:	Metabotropic glutamate receptor 5, GPRC1E, MGLUR5

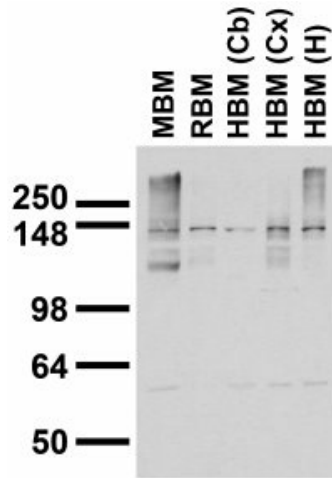
#### **Product images:**



mGluR1/5 staining of adult rat hippocampus.



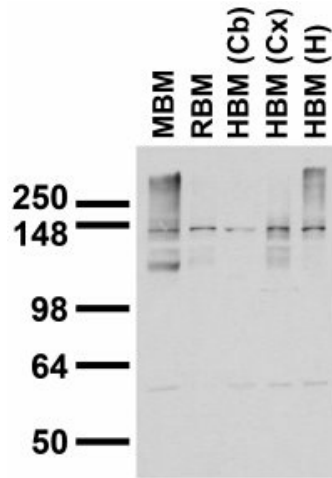
[View online »](#)



mGluR1/5 western blots on membranes prepared from whole mouse (MBM) and rat (RBM) brain, and from human cerebellum [HBM(Cb)], cerebral cortex [HBM(Cx)], and hippocampus [HBM(H)].



mGluR1/5 staining of adult rat hippocampus.



mGluR1/5 western blots on membranes prepared from whole mouse (MBM) and rat (RBM) brain, and from human cerebellum [HBM(Cb)], cerebral cortex [HBM(Cx)], and hippocampus [HBM(H)].