

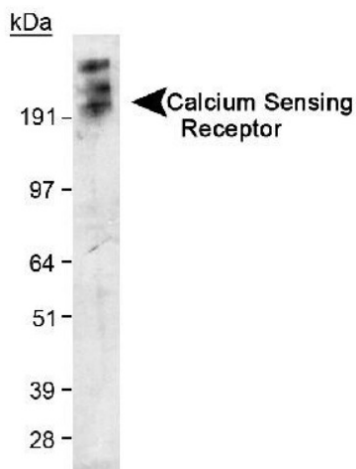
## Product datasheet for **MO25048-100**

### Calcium Sensing Receptor (CASR) (N-term) Mouse Monoclonal Antibody [Clone ID: HL 1499]

#### Product data:

Product Type:	Primary Antibodies
Clone Name:	HL 1499
Applications:	ELISA, IF, IHC, IP, R, WB
Reactivity:	Human, Mouse, Rabbit, Rat
Host:	Mouse
Isotype:	IgG1
Clonality:	Monoclonal
Formulation:	State: Purified
Gene Name:	calcium sensing receptor
Database Link:	<a href="#">Entrez Gene 846 Human</a>
Synonyms:	Extracellular calcium-sensing receptor, GPRC2A, PCAR1

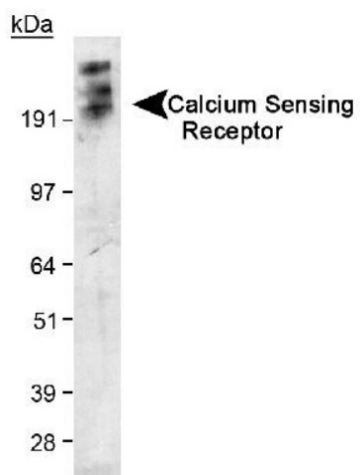
#### Product images:



Western Blot of Calcium Sensing Receptor in transfected 293 cell lysate. ECL exposure, 5 minutes. In this photo, the protein has aggregated and thus the higher MW band as expected.



[View online »](#)



Western Blot of Calcium Sensing Receptor in transfected 293 cell lysate. ECL exposure, 5 minutes. In this photo, the protein has aggregated and thus the higher MW band as expected.