

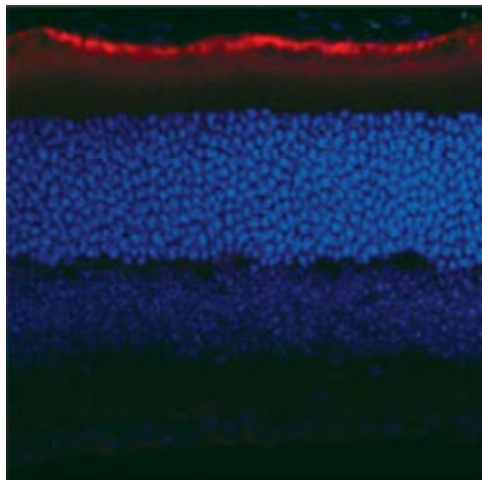
Product datasheet for **MO25011-100**

RPE65 Mouse Monoclonal Antibody [Clone ID: 401.8B11.3D9]

Product data:

Product Type:	Primary Antibodies
Clone Name:	401.8B11.3D9
Applications:	IF, IHC, IP, WB
Reactivity:	Bovine, Human, Mouse, Porcine
Host:	Mouse
Isotype:	IgG1
Clonality:	Monoclonal
Formulation:	State: Purified
Gene Name:	retinal pigment epithelium-specific protein 65kDa
Database Link:	Entrez Gene 6121 Human
Synonyms:	Retinol isomerase, Retinoid isomerohydrolase

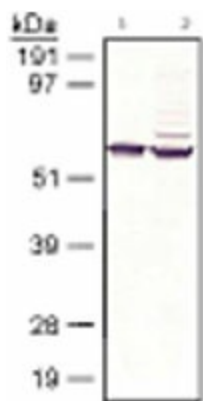
Product images:



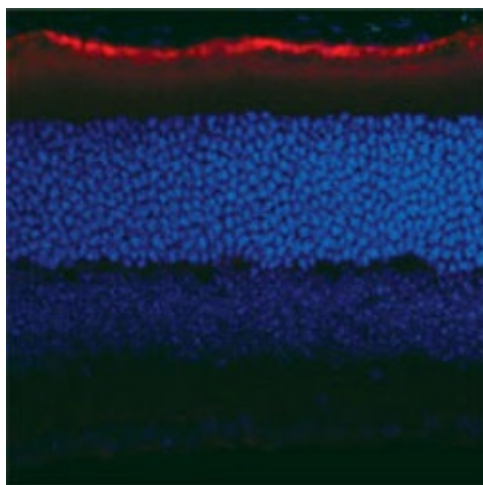
RPE65 staining of mouse retina tissue.



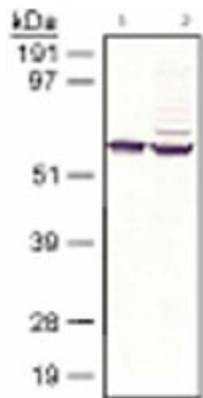
[View online »](#)



RPE65 detected in bovine and human samples. Lane 1: bovine RPE membrane, lane 2: recombinant human RPE transfected COS7 cell lysate.



RPE65 staining of mouse retina tissue.



RPE65 detected in bovine and human samples. Lane 1: bovine RPE membrane, lane 2: recombinant human RPE transfected COS7 cell lysate.