

Product datasheet for **MO22136-100**

Doublecortin (DCX) Mouse Monoclonal Antibody

Product data:

Product Type:	Primary Antibodies
Applications:	IF, IHC, WB
Reactivity:	Bovine, Chicken, Equine, Human, Mouse, Porcine, Primate, Rat
Host:	Mouse
Isotype:	IgG1
Clonality:	Monoclonal
Formulation:	State: Liquid
Gene Name:	Homo sapiens doublecortin (DCX), transcript variant 1
Database Link:	Entrez Gene 13193 Mouse Entrez Gene 84394 Rat Entrez Gene 1641 Human
Synonyms:	Lissancephalin-X, Doublin, DCX, DBCN, LISX
Protein Families:	Druggable Genome

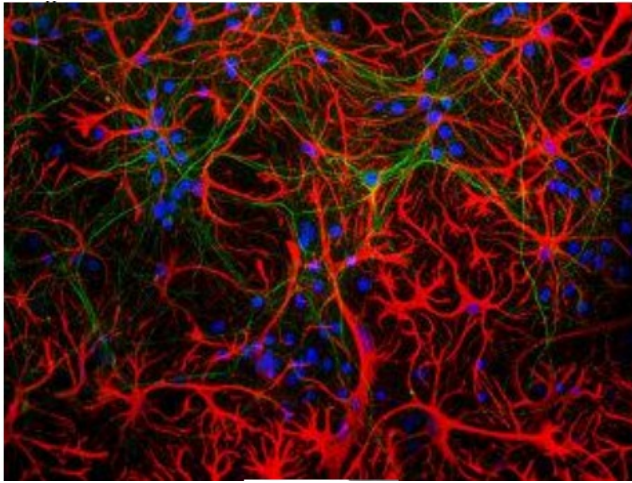
Product images:



Strip blot of rat spinal cord protein extract stained with GFAP. A prominent band at about 55 kDa corresponds to the major isoform of GFAP.



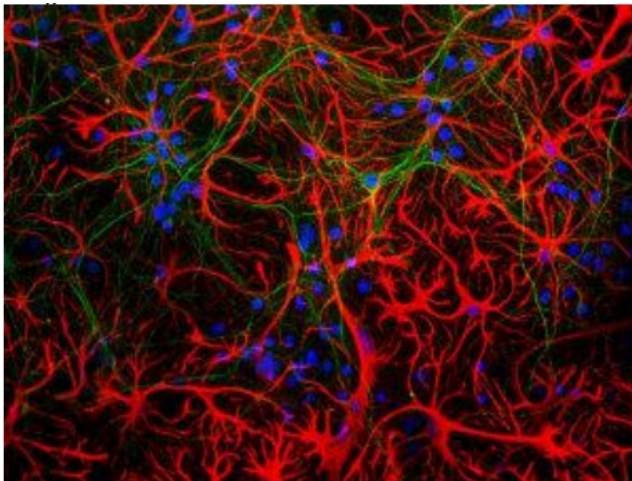
[View online »](#)



Mixed neuron-glia cultures stained with Mouse Monoclonal GFAP, and Chicken Polyclonal Neurofilament-NF-L (green). The GFAP antibody stains the network of astrocytes in these cultures, while the NF-L antibody stains neurons and their processes. The blue channel shows the localization of DNA. This antibody also works on formalin fixed paraffin embedded brain tissues. Protocol on Datasheet.



Strip blot of rat spinal cord protein extract stained with GFAP. A prominent band at about 55 kDa corresponds to the major isoform of GFAP.



Mixed neuron-glia cultures stained with Mouse Monoclonal GFAP, and Chicken Polyclonal Neurofilament-NF-L (green). The GFAP antibody stains the network of astrocytes in these cultures, while the NF-L antibody stains neurons and their processes. The blue channel shows the localization of DNA. This antibody also works on formalin fixed paraffin embedded brain tissues. Protocol on Datasheet.