

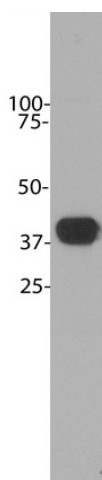
## Product datasheet for **MO22135-100**

### Aldolase C (ALDOC) Mouse Monoclonal Antibody

#### Product data:

Product Type:	Primary Antibodies
Applications:	IF, WB
Reactivity:	Bovine, Human, Mammalian, Porcine, Rat
Host:	Mouse
Isotype:	IgG1
Clonality:	Monoclonal
Formulation:	State: Aff - Purified
Gene Name:	aldolase, fructose-bisphosphate C
Database Link:	<a href="#">Entrez Gene 230 Human</a>
Synonyms:	ALDC, Brain-type aldolase

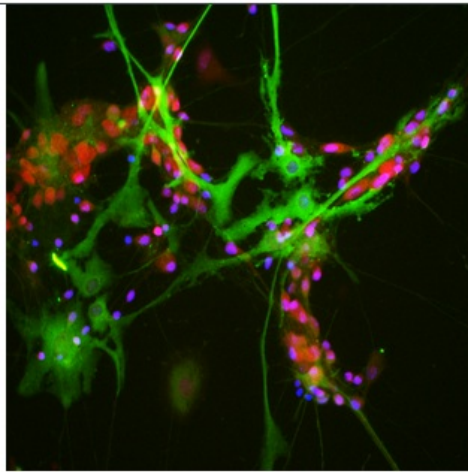
#### Product images:



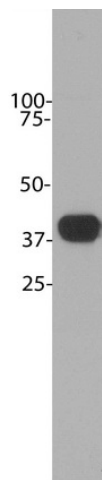
Blots of crude cow cerebellum homogenate blotted with Aldolase C. The Aldolase C monoclonal binds strongly and cleanly to a band at about 40 kDa.



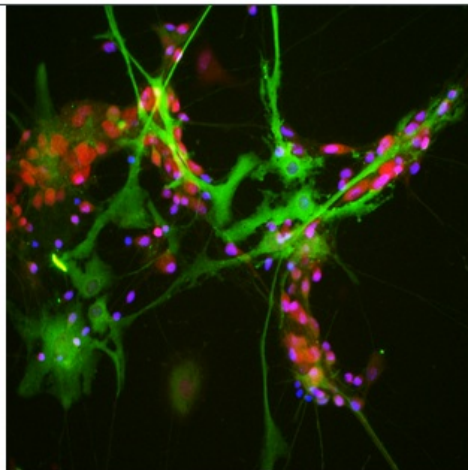
[View online »](#)



View of mixed neuron/glia cultures stained with Aldolase C (green) and our rabbit antibody to NeuN/FOX3 (Cat#[RA22113]) antibody (red). Aldolase C antibody reveals strong cytoplasmic staining in astrocytes, while Rabbit Fox3/NeuN antibody shows nuclear and distal cytoplasmic staining in neuron cells and is complete absence of astrocytes. Blue is a DNA stain



Blots of crude cow cerebellum homogenate blotted with Aldolase C. The Aldolase C monoclonal binds strongly and cleanly to a band at about 40 kDa.



View of mixed neuron/glia cultures stained with Aldolase C (green) and our rabbit antibody to NeuN/FOX3 (Cat#[RA22113]) antibody (red). Aldolase C antibody reveals strong cytoplasmic staining in astrocytes, while Rabbit Fox3/NeuN antibody shows nuclear and distal cytoplasmic staining in neuron cells and is complete absence of astrocytes. Blue is a DNA stain