

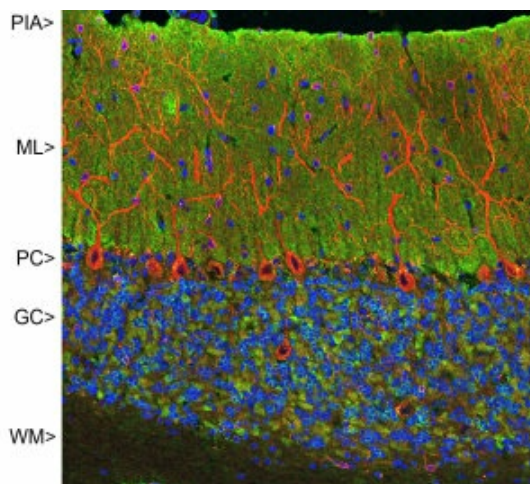
Product datasheet for MO22132-100

VILIP1 (VSNL1) Mouse Monoclonal Antibody

Product data:

Product Type:	Primary Antibodies
Applications:	IF, WB
Reactivity:	Bovine, Human, Mouse, Rat
Host:	Mouse
Isotype:	IgG1
Clonality:	Monoclonal
Formulation:	State: Aff - Purified
Gene Name:	visinin like 1
Database Link:	Entrez Gene 7447 Human
Synonyms:	VILIP, VLP-1, VSNL1, VISL1, Neural visinin-like protein 1, NVL-1, NVP-1, Hippocalcin-like protein 3

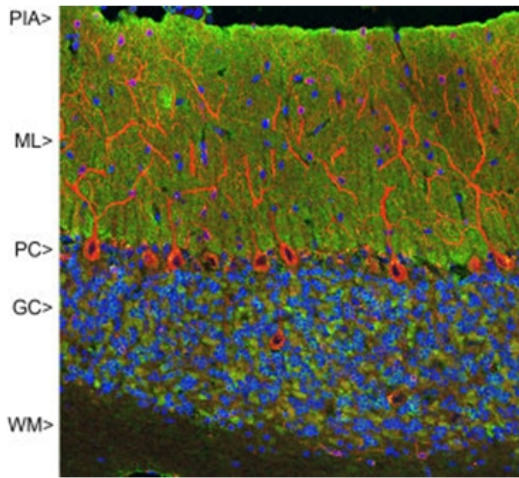
Product images:



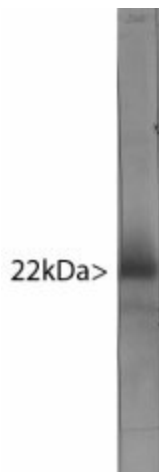
Confocal image of adult rat cerebellar cortex stained with VSNL1 (green) and chicken polyclonal antibody to MAP2 (red) and DNA (blue). VSNL1 antibody reveals synapses in the molecular layer (ML) strongly. Synaptic regions are also seen in the granule cell layer (GC). The perikarya of Purkinje cells (PC) are revealed with the MAP2 antibody (4). Little staining is seen in the white matter (WM). Protocol on Data-sheet.



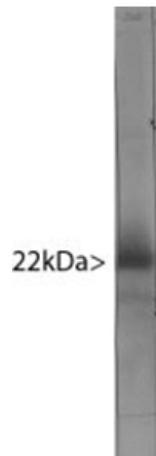
[View online »](#)



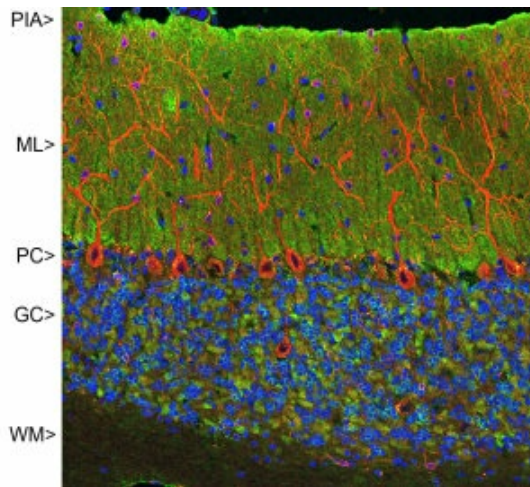
Confocal image of adult rat cerebellar cortex stained with VSNL1 (green) and chicken polyclonal antibody to MAP2 (red) and DNA (blue). VSNL1 antibody reveals synapses in the molecular layer (ML) strongly. Synaptic regions are also seen in the granule cell layer (GC). The perikarya of Purkinje cells (PC) are revealed with the MAP2 antibody (4). Little staining is seen in the white matter (WM). Protocol on Data-sheet.



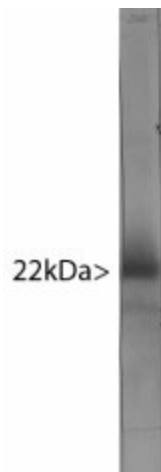
Western blot of bovine cerebellum homogenate stained with VSNL1. Note the strong clean band running at 22kDa. Protocol on Data-sheet.



Western blot of bovine cerebellum homogenate stained with VSNL1. Note the strong clean band running at 22kDa. Protocol on Data-sheet.



Confocal image of adult rat cerebellar cortex stained with VSNL1 (green) and chicken polyclonal antibody to MAP2 (red) and DNA (blue). VSNL1 antibody reveals synapses in the molecular layer (ML) strongly. Synaptic regions are also seen in the granule cell layer (GC). The perikarya of Purkinje cells (PC) are revealed with the MAP2 antibody (4). Little staining is seen in the white matter (WM). Protocol on Data-sheet.



Western blot of bovine cerebellum homogenate stained with VSNL1. Note the strong clean band running at 22kDa. Protocol on Data-sheet.