

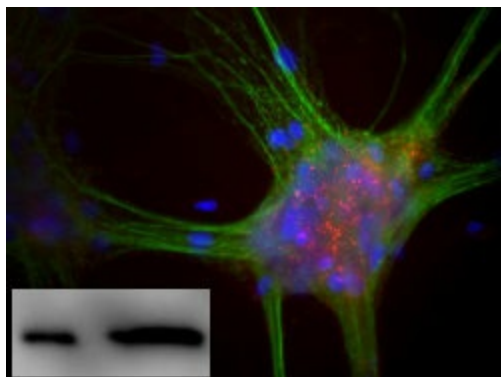
## Product datasheet for MO22112-100

### alpha Synuclein (SNCA) (61-95) Mouse Monoclonal Antibody

#### Product data:

|                   |                                                                                                                      |
|-------------------|----------------------------------------------------------------------------------------------------------------------|
| Product Type:     | Primary Antibodies                                                                                                   |
| Applications:     | IF, WB                                                                                                               |
| Reactivity:       | Human, Mouse, Rat                                                                                                    |
| Host:             | Mouse                                                                                                                |
| Isotype:          | IgG1                                                                                                                 |
| Clonality:        | Monoclonal                                                                                                           |
| Formulation:      | State: Ascites                                                                                                       |
| Gene Name:        | Homo sapiens synuclein, alpha (non A4 component of amyloid precursor) (SNCA), transcript variant 1                   |
| Database Link:    | <a href="#">Entrez Gene 20617 Mouse</a> <a href="#">Entrez Gene 29219 Rat</a> <a href="#">Entrez Gene 6622 Human</a> |
| Synonyms:         | NACP, PARK1                                                                                                          |
| Protein Families: | Druggable Genome                                                                                                     |
| Protein Pathways: | Alzheimer's disease, Parkinson's disease                                                                             |

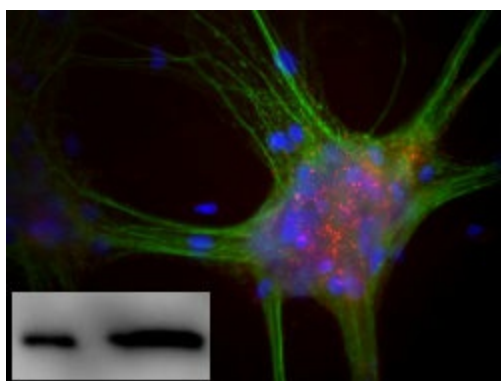
#### Product images:



Mixed neuron-glia cultures stained with alpha-synuclein (red) and chicken polyclonal antibody to MAP2 (green). The alpha-synuclein antibody stains vesicular structures the perikarya and processes of the neurons in this Note that some of the neuronal perikarya contain much more alpha-synuclein than others. The blue channel shows the localization of DNA. Inset: Blots of antibody against recombinant alpha-synuclein (left lane) and crude extract of mouse brain (right lane). Protocol on Data-sheet.



[View online »](#)



Mixed neuron-glia cultures stained with alpha-synuclein (red) and chicken polyclonal antibody to MAP2 (green). The alpha-synuclein antibody stains vesicular structures the perikarya and processes of the neurons in this Note that some of the neuronal perikarya contain much more alpha-synuclein than others. The blue channel shows the localization of DNA. Inset: Blots of antibody against recombinant alpha-synuclein (left lane) and crude extract of mouse brain (right lane). Protocol on Data-sheet.