

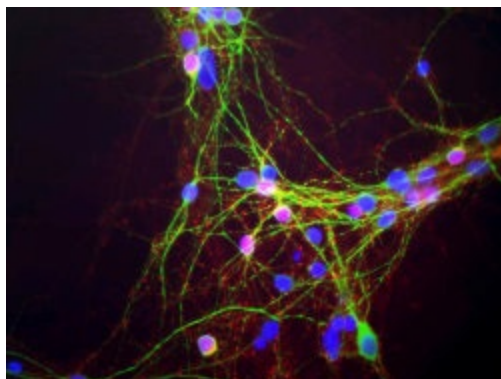
## Product datasheet for **MO22111-100**

### alpha Synuclein (SNCA) (61-95) Mouse Monoclonal Antibody

#### Product data:

Product Type:	Primary Antibodies
Applications:	IF, WB
Reactivity:	Human, Mouse, Rat
Host:	Mouse
Isotype:	IgG1
Clonality:	Monoclonal
Formulation:	State: Ascites
Gene Name:	Homo sapiens synuclein, alpha (non A4 component of amyloid precursor) (SNCA), transcript variant 1
Database Link:	<a href="#">Entrez Gene 20617 Mouse</a> <a href="#">Entrez Gene 29219 Rat</a> <a href="#">Entrez Gene 6622 Human</a>
Synonyms:	NACP, PARK1
Protein Families:	Druggable Genome
Protein Pathways:	Alzheimer's disease, Parkinson's disease

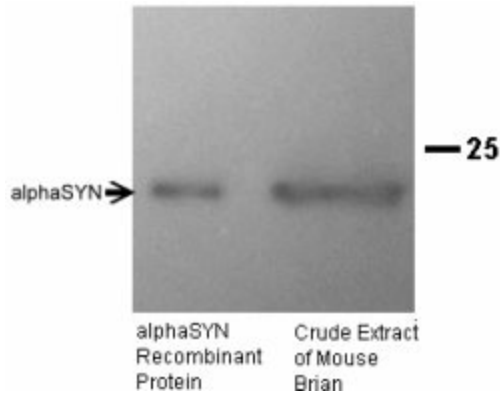
#### Product images:



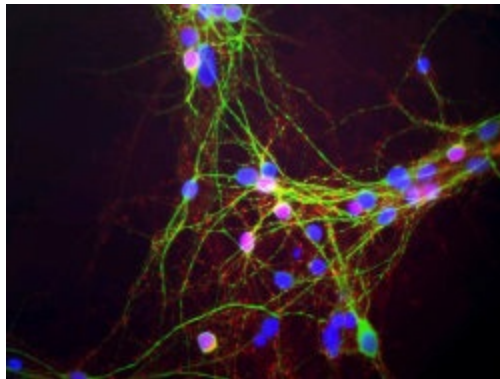
Mixed neuron-glia cultures stained with alpha-synuclein (red) and chicken polyclonal antibody to MAP2 (green). The alpha-synuclein antibody stains vesicular structures the perikarya and processes of the neurons in this Note that some of the neuronal perikarya contain much more alpha-synuclein than others. The blue channel shows the localization of DNA. Protocol on Data-sheet.



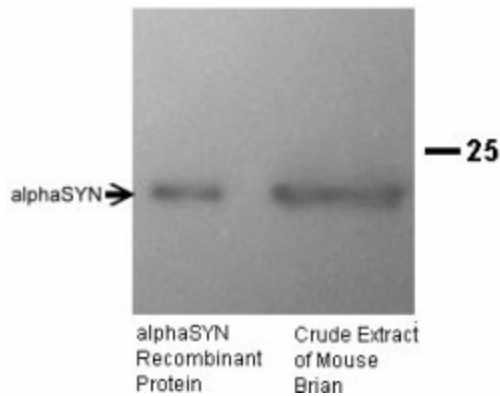
[View online »](#)



blots alpha-synuclein antibody on recombinant alpha-synuclein (left lane) and crude extract of mouse brain (right lane, courtesy Rogan Tinsley, Howard Florey Institute, University of Melbourne).



Mixed neuron-glia cultures stained with alpha-synuclein (red) and chicken polyclonal antibody to MAP2 (green). The alpha-synuclein antibody stains vesicular structures the perikarya and processes of the neurons in this Note that some of the neuronal perikarya contain much more alpha-synuclein than others. The blue channel shows the localization of DNA. Protocol on Data-sheet.



blots alpha-synuclein antibody on recombinant alpha-synuclein (left lane) and crude extract of mouse brain (right lane, courtesy Rogan Tinsley, Howard Florey Institute, University of Melbourne).