

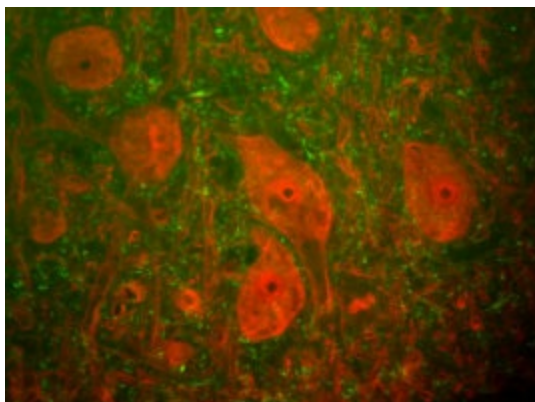
## Product datasheet for **MO22109-100**

### PGP9.5 (UCHL1) Mouse Monoclonal Antibody

#### Product data:

Product Type:	Primary Antibodies
Applications:	IF, WB
Reactivity:	Bovine, Human, Rat
Host:	Mouse
Isotype:	IgG1
Clonality:	Monoclonal
Formulation:	State: Liquid
Gene Name:	Homo sapiens ubiquitin C-terminal hydrolase L1 (UCHL1)
Database Link:	<a href="#">Entrez Gene 29545 Rat</a> <a href="#">Entrez Gene 7345 Human</a>
Synonyms:	UCH-L1, PGP 9.5, Ubiquitin thioesterase L1, Neuron cytoplasmic protein 9.5
Protein Families:	Druggable Genome, Protease
Protein Pathways:	Parkinson's disease

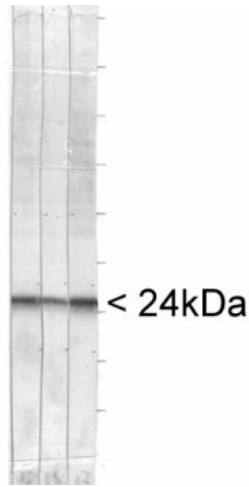
#### Product images:



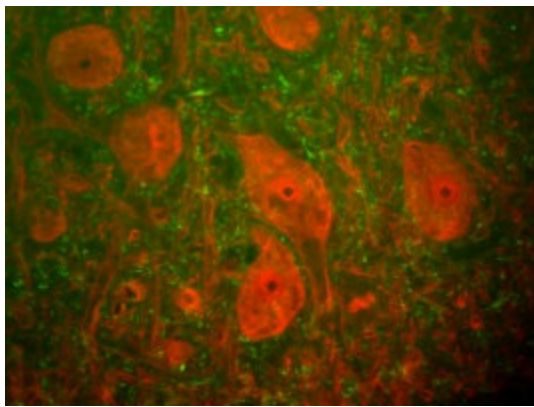
Shows a section of rat spinal cord stained with UCHL1 (red) and neurofilament NF-H antibody (green). The large cells are  $\alpha$ -motorneurons and UCHL1 fills the cytoplasm of their perikarya and dendrites. The neurofilament NF-H antibody binds primarily to phosphorylated axonal forms of NF-H, and so stains axons coursing between the large motor neurons. Protocol on data-sheet.



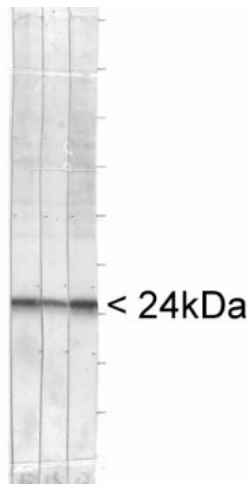
[View online »](#)



Blots of whole cell homogenate of bovine brain stained with mouse monoclonal UHCL1s. Right most lane is [CH22019]. Protocol on data-sheet.



Shows a section of rat spinal cord stained with UCHL1 (red) and neurofilament NF-H antibody (green). The large cells are a-motorneurons and UCHL1 fills the cytoplasm of their perikarya and dendrites. The neurofilament NF-H antibody binds primarily to phosphorylated axonal forms of NF-H, and so stains axons coursing between the large motor neurons. Protocol on data-sheet.



Blots of whole cell homogenate of bovine brain stained with mouse monoclonal UHCL1s. Right most lane is [CH22019]. Protocol on data-sheet.