

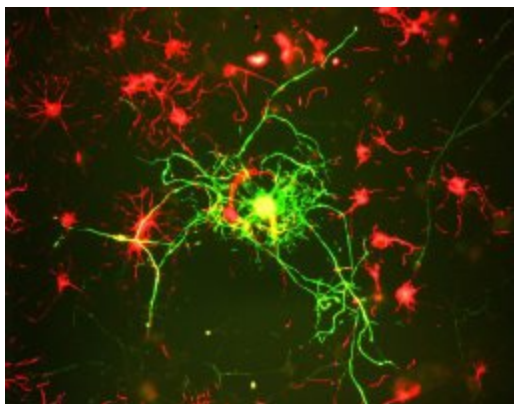
Product datasheet for **MO22105-100**

Neurofilament (NEFM) Mouse Monoclonal Antibody [Clone ID: 3H11]

Product data:

Product Type:	Primary Antibodies
Clone Name:	3H11
Applications:	IF, IHC, WB
Reactivity:	Chicken, Feline, Human, Mouse, Rat
Host:	Mouse
Isotype:	IgG
Clonality:	Monoclonal
Formulation:	State: Supernatant
Gene Name:	neurofilament, medium polypeptide
Database Link:	Entrez Gene 4741 Human
Synonyms:	Neurofilament medium polypeptide, NF-M, NEF3, NEFM, Neurofilament 3, (Neuronal Marker)

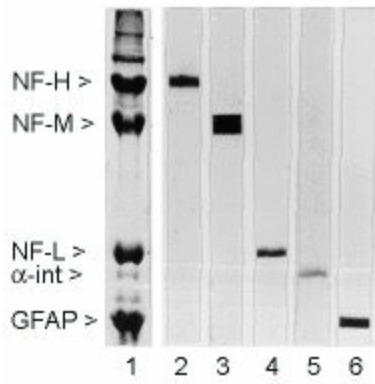
Product images:



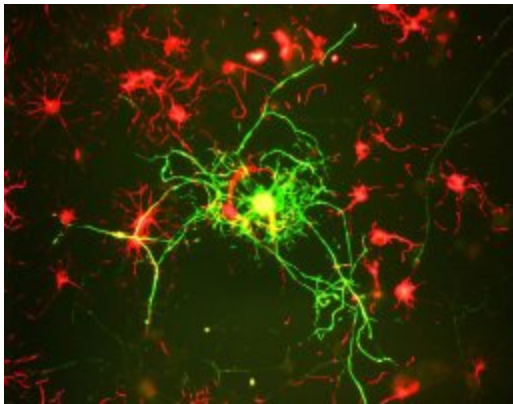
Culture of adult neural cells. Mature neurons can be identified by their morphology and because they stain strongly with antibodies to NF-L, NF-M and NF-H. The surrounding stellate red cells are stained with Neurofilament alpha-internexin/NF66. These are apparently mitotic neuronal progenitor cells and express many other neuronal markers.



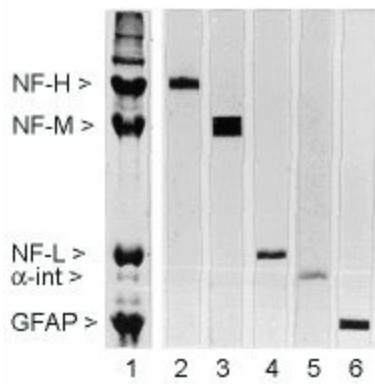
[View online »](#)



Rat spinal cord homogenate showing the major intermediate filament proteins of the nervous system (lane 1). The remaining lanes show blots of this material stained with various antibodies including NF-M (lane 3).



Culture of adult neural cells. Mature neurons can be identified by their morphology and because they stain strongly with antibodies to NF-L, NF-M and NF-H. The surrounding stellate red cells are stained with Neurofilament alpha-interneixin/NF66. These are apparently mitotic neuronal progenitor cells and express many other neuronal markers.



Rat spinal cord homogenate showing the major intermediate filament proteins of the nervous system (lane 1). The remaining lanes show blots of this material stained with various antibodies including NF-M (lane 3).