

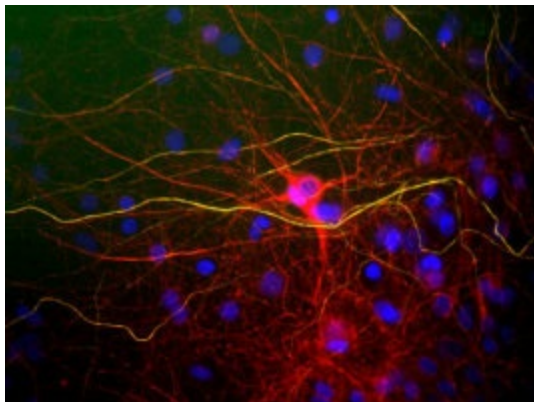
Product datasheet for **MO22103-100**

NFH (NEFH) (phosphospecific) Mouse Monoclonal Antibody

Product data:

Product Type:	Primary Antibodies
Applications:	IF, IHC, WB
Reactivity:	Chicken, Feline, Human, Mouse, Primate, Rat
Host:	Mouse
Isotype:	IgG
Clonality:	Monoclonal
Formulation:	State: Ascites
Gene Name:	neurofilament, heavy polypeptide
Database Link:	Entrez Gene 4744 Human
Synonyms:	NEFH,NF-H,KIAA0845, NFH, 200 kDa neurofilament protein, Neurofilament triplet H protein, (Neuronal Marker), heavy polypeptide

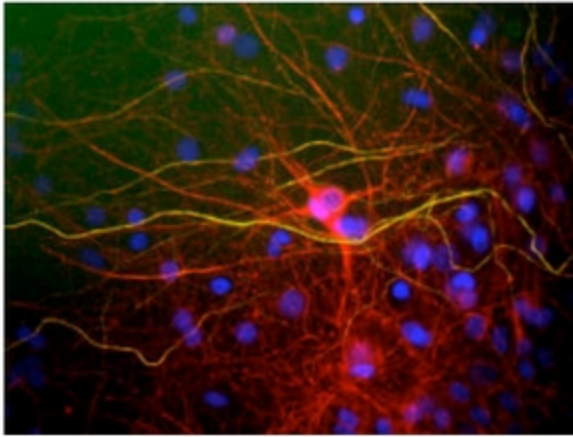
Product images:



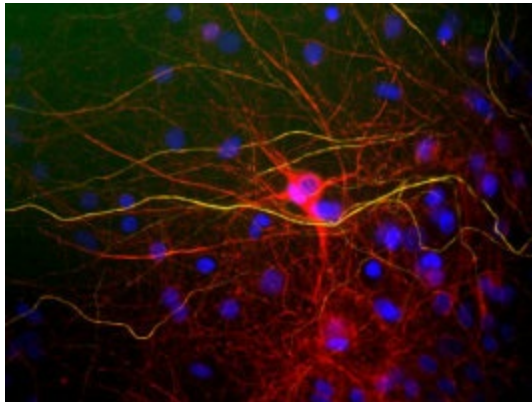
View of mixed neuron/glia cultures stained with chicken polyclonal NF-L (red) and phosphorylated NF-H. The NF-L protein is assembled into neurofilaments which are found throughout the axons, dendrites and perikarya of these cells. In contrast the phosphorylated NF-H has a much more restricted expression pattern, being found only in developed axonal neurofilaments. Since both proteins are found in neurofilaments, the red and green patterns overlap, so that neurofilaments containing NF-L and phosphorylated NF-H appear yellowish. In contrast neurofilaments containing only NF-L appear red. Protocol on datasheet.



[View online »](#)



View of mixed neuron/glia cultures stained with chicken polyclonal NF-L (red) and phosphorylated NF-H. The NF-L protein is assembled into neurofilaments which are found throughout the axons, dendrites and perikarya of these cells. In contrast the phosphorylated NF-H has a much more restricted expression pattern, being found only in developed axonal neurofilaments. Since both proteins are found in neurofilaments, the red and green patterns overlap, so that neurofilaments containing NF-L and phosphorylated NF-H appear yellowish. In contrast neurofilaments containing only NF-L appear red.



View of mixed neuron/glia cultures stained with chicken polyclonal NF-L (red) and phosphorylated NF-H. The NF-L protein is assembled into neurofilaments which are found throughout the axons, dendrites and perikarya of these cells. In contrast the phosphorylated NF-H has a much more restricted expression pattern, being found only in developed axonal neurofilaments. Since both proteins are found in neurofilaments, the red and green patterns overlap, so that neurofilaments containing NF-L and phosphorylated NF-H appear yellowish. In contrast neurofilaments containing only NF-L appear red. Protocol on datasheet.