

Product datasheet for **MG227687**

Aldh5a1 (NM_172532) Mouse Tagged ORF Clone

Product data:

Product Type:	Expression Plasmids
Product Name:	Aldh5a1 (NM_172532) Mouse Tagged ORF Clone
Tag:	TurboGFP
Symbol:	Aldh5a1
Synonyms:	6330403E24Rik; Ahd-1; Ahd1; D630032B01Rik; OTTMUSG00000000613; SSADH; Ssdh1
Mammalian Cell Selection:	Neomycin
Vector:	pCMV6-AC-GFP (PS100010)
E. coli Selection:	Ampicillin (100 ug/mL)



[View online »](#)

ORF Nucleotide Sequence:

>MG227687 representing NM_172532
 Red=Cloning site Blue=ORF Green=Tags(s)

TTTTGTAATACGACTCACTATAGGGCGGCCGGAATTCGTCGACTGGATCCGGTACCGAGGAGATCTGCC
 GCC**GCGATCGCC**

ATGGCGACCTGCTTTCTGCTGCGGAGCTTCTGGGCGCGCGTCTGCGCTGCCGCTCCCGCGCGCTTCC
 GCCCGGAGCCCGCAGGAACCCCGCGCGCAGCTACGCCAGCGCCCTGGGGCCCTCCACGCCGACCTACT
 CCGCGGGGACAGCTTCGTGGGCGCCGCTGGCTCCAGCCCCGCCACCTTCCCGGTGTACGACCCGGCC
 AGCGGCGCAAGCTGGGCACCGTGGCCGACTGCGGGGTACCCGAGGCCCGCGCTGCTGTGCGCGCCGCT
 ACGATGCCTTCAACAGCTGGAAGGGGTCTCGGTCAAGGAGAGGAGCTTACTACTCCGTAATGGTACGA
 CTTAATGATACAAAATAAGGACGACCTTGCCAAGATCATAACAGCCGAGAGTGAAAGCCACTGAAAGAG
 GCCCAGGAGAAATTCGTATTCAGCCCTTTCTGGAGTGGTTCTCAGAGGAAGCTCGCCGATTTATG
 GAGACATCATCTATACCTCTGCCAAAGATAAGCGAGGGCTAGTCCTCAAGCAGCCCGTTGGTGTGGCGGC
 CATCATCACACCGTGAATTTTCCAGTGCATGATCACCCGAAAGTGGGGCCGCTTGGCAGCTGGC
 TGCACTGTGGTGGTGAACCTGCTGAAGACACACCCTATTCGCCCTGGCCCTGGCTCAGCTTGCAAAC
 AGCGGGGAATCCCTGCAGGTGTCTACAACGTCATTCCTGCTCTAGAAACAAGGCCAAGGAAGTGGGAGA
 GGTCTGTGTACCGATCCATTGGTGTCCAAAATTTCTTTACTGGCTCAACAGCAACGGGAAAGATCCTG
 CTACATCACGCAGCAAATTCGTGAAGCGTGTCTCCATGGAGTTGGTGGCCCTCGCCCCATTCATTGTCT
 TTGACAGTGCCAAACGTAGACCAGCCGTCGCGGGGCAATGGCGTCTAAATTTAGGAATGCTGGGCAGAC
 TTGCGTTTGTCAAACAGATTCTTGGTACAGCGGGGTATCCACGATTCCTTTGTAACGAAATTTGCGGAA
 GCCATGAAGAAAAGCCTGCGTGTAGTAACGGATTTGAGGAAGGAACACTCAAGGGCCGTTAATTAATG
 AGAAAGTGTAGAAAAGGTAGAGAAGCAGGTGAATGACGCAGTTGCCAAGGGGCCACGTTGTGACGGG
 CGGAAAGCGACACCAAAGTGGAGGAAATTTCTTTGAGCCACCCCTGCTCAGCAATGTACCAGGACATG
 CTCTGCATCACTGAGGAGACCTTTGACCTCTGGCACCAGTCATCAAGTTTGATAAGGAGGAAGAGCCG
 TCGCCATCGAAATGCAGCTGAGGTTGGATTGGCAGGTTACTTTTACTCTCAAGACCCGCGCCAGATCTG
 GAGAGTGGCGGAGCAGCTGGAGGTGGCATGGTCGGTGTGAATGAAGGGCTCATCTTTCAGTGAATGT
 CCTTTTGGTGGGGTGAACAGTCCGGCCTTGGCGCGAGGGGTCCAAGTATGGCATTGACGAGTACCTAG
 AGGTCAAGTATGTGTGTACGGAGGCTTG

ACGCGTACGCGGCCGCTCGAG - GFP Tag - GTTTAA

Protein Sequence:

>MG227687 representing NM_172532
 Red=Cloning site Green=Tags(s)

MATCFLLRSFWAARPALPPPGRFRPEPAGTPRRSYASGPGGLHADLLRGDSFVGGRWLPAPATFPVYDPA
 SGAKLGTVADCGVPEARAARAAAYDAFNSWKGVSVKERSLLLRKWDLMIQNKDDLAKIITAESGKPLKE
 AQGEILYSALFLEWFSEEARRIYGDIIYTSKDKRGLVLPVGVAAIITPWNFPSAMITRKVGAALAAG
 CTVVVKPAEDTPYSALALALANQAGIPAGVYNVIPC SRNKAKEVGEVLCTDPLVSKISFTGSTATGKIL
 LHHAANSVKRVSMEGLGLAPFIVFDSANVDQAVAGAMASKFRNAGQTCVCSNRFLVQRGIHDSFVTKFAE
 AMKKSRLRVNGFEEGTTQGPLINEKAVEKVEKQVNDAAVAKGATVVTGGKRHQSGGNFFPTLLSNVTRDM
 LCITEETFGLAPVIKFDKEEEAVAIANAEEVGLAGYFYSDPAQIWRVAEQLEVMVGVNEGLISSVEC
 PFGGVKQSGLGREGSKYIDEYLEVKYVCYGG

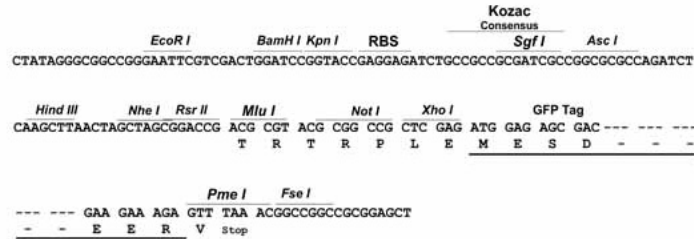
TRTRPLE - GFP Tag - V

Restriction Sites:

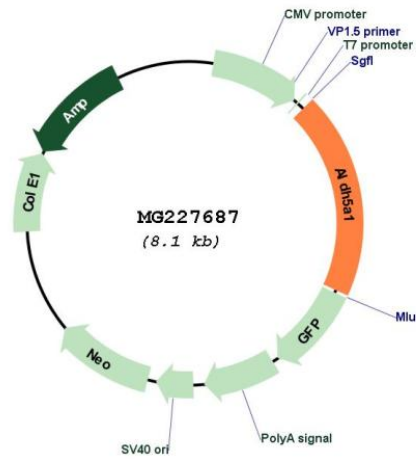
Sgfl-Mlul

Cloning Scheme:

Cloning sites used for ORF Shutting:



Plasmid Map:



ACCN:	NM_172532
ORF Size:	1569 bp
OTI Disclaimer:	The molecular sequence of this clone aligns with the gene accession number as a point of reference only. However, individual transcript sequences of the same gene can differ through naturally occurring variations (e.g. polymorphisms), each with its own valid existence. This clone is substantially in agreement with the reference, but a complete review of all prevailing variants is recommended prior to use. More info
OTI Annotation:	This clone was engineered to express the complete ORF with an expression tag. Expression varies depending on the nature of the gene.
Components:	The ORF clone is ion-exchange column purified and shipped in a 2D barcoded Matrix tube containing 10ug of transfection-ready, dried plasmid DNA (reconstitute with 100 ul of water).
Reconstitution Method:	<ol style="list-style-type: none">1. Centrifuge at 5,000xg for 5min.2. Carefully open the tube and add 100ul of sterile water to dissolve the DNA.3. Close the tube and incubate for 10 minutes at room temperature.4. Briefly vortex the tube and then do a quick spin (less than 5000xg) to concentrate the liquid at the bottom.5. Store the suspended plasmid at -20°C. The DNA is stable for at least one year from date of shipping when stored at -20°C.
RefSeq:	NM_172532.3 , NP_766120.1
RefSeq Size:	5647 bp
RefSeq ORF:	1572 bp
Locus ID:	214579
UniProt ID:	Q8BWF0
Cytogenetics:	13 10.77 cM
Gene Summary:	Catalyzes one step in the degradation of the inhibitory neurotransmitter gamma-aminobutyric acid (GABA).[UniProtKB/Swiss-Prot Function]