

## Product datasheet for **MG227665**

### **Pdlim5 (NM\_001190857) Mouse Tagged ORF Clone**

#### Product data:

**Product Type:** Expression Plasmids  
**Product Name:** Pdlim5 (NM\_001190857) Mouse Tagged ORF Clone  
**Tag:** TurboGFP  
**Symbol:** Pdlim5  
**Synonyms:** 1110001A05Rik; AI987914; C87059; Enh; Enh1; Enh2; Enh3; LIM  
**Mammalian Cell Selection:** Neomycin  
**Vector:** pCMV6-AC-GFP (PS100010)  
**E. coli Selection:** Ampicillin (100 ug/mL)  
**ORF Nucleotide Sequence:** >MG227665 representing NM\_001190857  
**Red=Cloning site Blue=ORF Green=Tags(s)**

TTTTGTAATACGACTCACTATAGGGCGGCCGGAATTCGTCGACTGGATCCGGTACCGAGGAGATCTGCC  
GCC**CGATCGCC**

ATGAGCAACTACAGTGTGTCATTGGTCGGCCAGCTCCTTGGGGTTCCGGCTCCAAGGTGGCAAGGATT  
TCAACATGCCTCTGACAATCTCTAGTCTGAAGGATGGTGGCAAGGCATCTCAGGCACATGTCAGAATAGG  
GGACGTGGTTCTCAGCATCGATGGGATCAGTGCACAGGAATGACGCATCTTGAAGCCAGAACAAGATT  
AAGGCTTGTACGGCTCCTTGAATGACTCTACAAAGAGCTTCAGCTGCAGCCAAGAGTGAGCCGGTTT  
CCGTCCAGAAGCCACAGTCACCAGCGTGTGTTCCGAGTCTGCTCAGGAGCTAGCAGAGGGACAGAGAAG  
AGGATCCCAGGGTGACATTAAGCAGCAAAATGGGAAAATTCACCTAAACGCCACCAAGAAAACACATT  
GTGGAGCGCAACACGGAGTTTTATCACATACCCACTCACAGTGTGCCAGCAAGAAACGGCTGATTGAGG  
ACACTGAGGACTGGCGCCCCGGACTGGAACGACTCAGTCTCGTTCTTCCGGATCCTTGCCAGATCAC  
TGGGACTGAGCATCTGACAGAACTGAAAATGACAATACGAAGAAGGCAAGGAAAAGATACCCCTTAC  
GTCTTTAGTCCCAAATACACAAAATTACGTGACTGGCACCATGAAGTTTCAGCACGTGCTTAAATGTAC  
AG

**ACGCGTACGCGGCCGCTCGAG** - GFP Tag - GTTTAA



[View online »](#)

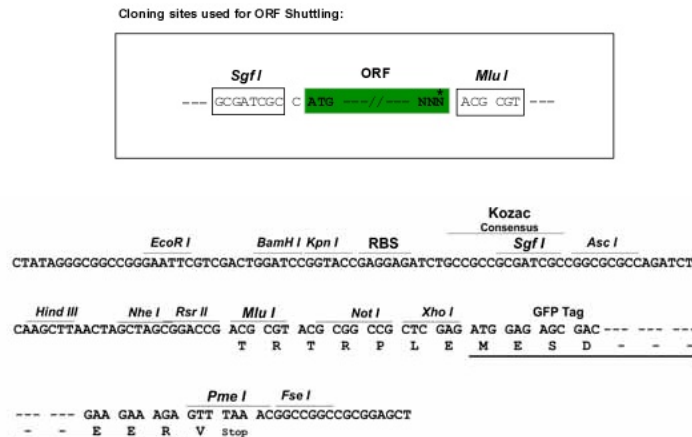
**Protein Sequence:** >MG227665 representing NM\_001190857  
 Red=Cloning site Green=Tags(s)

MSNYSVSLVGPAPWGFRLQGGKDFNMPLTISSLKDGKASQAHVRIGDVVLSIDGISAQGMTHLEAQNKI  
 KACTGSLNMTLQRASAAAKSEPVSVQKPTVTSVCSESAQELAEGQRRGSQGDIKQNGKIPKRPKRKHI  
 VERNTEFYHIPTSDASKKRLIEDTEDWRPRTGTTQSRSFRIQAQITGTEHLTESENDNTKKAKEKIPLH  
 VFSPKYTKLRDWHHEVSARALNVQ

TRTRPLE - GFP Tag - V

**Restriction Sites:** SgfI-MluI

**Cloning Scheme:**



**ACCN:** NM\_001190857

**ORF Size:** 702 bp

**OTI Disclaimer:** The molecular sequence of this clone aligns with the gene accession number as a point of reference only. However, individual transcript sequences of the same gene can differ through naturally occurring variations (e.g. polymorphisms), each with its own valid existence. This clone is substantially in agreement with the reference, but a complete review of all prevailing variants is recommended prior to use. [More info](#)

**OTI Annotation:** This clone was engineered to express the complete ORF with an expression tag. Expression varies depending on the nature of the gene.

**Components:** The ORF clone is ion-exchange column purified and shipped in a 2D barcoded Matrix tube containing 10ug of transfection-ready, dried plasmid DNA (reconstitute with 100 ul of water).

**Reconstitution Method:**

1. Centrifuge at 5,000xg for 5min.
2. Carefully open the tube and add 100ul of sterile water to dissolve the DNA.
3. Close the tube and incubate for 10 minutes at room temperature.
4. Briefly vortex the tube and then do a quick spin (less than 5000xg) to concentrate the liquid at the bottom.
5. Store the suspended plasmid at -20°C. The DNA is stable for at least one year from date of shipping when stored at -20°C.

**RefSeq:** [NM\\_001190857.1](#), [NP\\_001177786.1](#)

**RefSeq Size:** 1995 bp

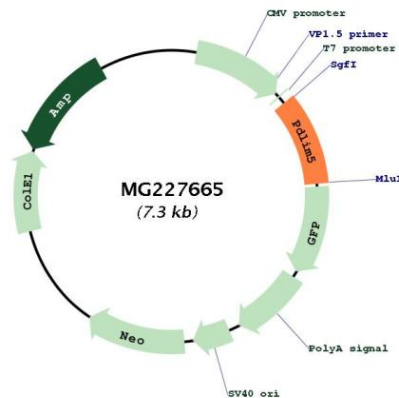
**RefSeq ORF:** 705 bp

**Locus ID:** 56376

**Cytogenetics:** 3 H1

**Gene Summary:** May play an important role in the heart development by scaffolding PKC to the Z-disk region. Isoform 2 and isoform 3 may negatively modulate the scaffolding activity of isoform 1. May play a role in the regulation of cardiomyocyte expansion. Overexpression promotes the development of heart hypertrophy. Contributes to the regulation of dendritic spine morphogenesis in neurons. May restrain postsynaptic growth of excitatory synapses (By similarity).[UniProtKB/Swiss-Prot Function]

### Product images:



Circular map for MG227665