

Product datasheet for **MG227638**

Pfkfb3 (NM_133232) Mouse Tagged ORF Clone

Product data:

Product Type:	Expression Plasmids
Product Name:	Pfkfb3 (NM_133232) Mouse Tagged ORF Clone
Tag:	TurboGFP
Symbol:	Pfkfb3
Synonyms:	E330010H22Rik; iPFK-2; uPFK-2
Mammalian Cell Selection:	Neomycin
Vector:	pCMV6-AC-GFP (PS100010)
E. coli Selection:	Ampicillin (100 ug/mL)



[View online »](#)

ORF Nucleotide Sequence:

>MG227638 representing NM_133232
 Red=Cloning site Blue=ORF Green=Tags(s)

TTTTGTAATACGACTCACTATAGGGCGGCCGGAATTCGTCGACTGGATCCGGTACCGAGGAGATCTGCC
 GCC**CGGATCGCC**

ATGCCGTTGGAAGTACCCAGAGCCGGGTACAGAAGATCTGGGTGCCCGTCGATACCGACCCTCGTTGC
 CCAGATCTGTGGGCCGAAGCTGACCAACTCCCAACCGTGATTGTGATGGTGGGGCTCCAGCCGGGG
 TAAGACTTACATCTCAAGAAGCTGACTCGCTACCTCAACTGGATAGGTGTTCCAACGAAAGTGTCAAT
 GTGGGAGAGTATCGCGTGAGGCTGTGAAGCAGTACAGCTTTACAACCTCTCCGCCCTGACAATGAGG
 AAGCCATGAGAGTCCGAAAACAGTGTGCCTTAGCTGCCCTGAGAGATGTCAAAGCTACCTGACAAAGGA
 AGGTGGACAGATTGCAGTTTTTGTGCCACCAATACAACCTAGAGAAAGAAGGCACATGATCCTTAATTTT
 GCCAAAGAAAATGACTTCAAGGCATTTTTCATCGAGTCGGTCTGTGACGACCCTACTGTTGTGCCCTCCA
 ACATCATGGAAGTAAAACTCCAGCCCGGATTACAAAGACTGCAACTCAGCAGAAGCCATGGACGACTT
 CATGAAGAGAATCAATTGCTATGAAGCCAGCTACCAGCCTTTGACCCTGATAAATGTGACAGGGACTTG
 TCACTCATCAAAGTGATTGATGTTGGCCGGAGGTTCTTGGTGAACAGAGTGCAGGACCACATCCAGAGCC
 GAATTGTATACTACCTGATGAACATCCAGTGCAGCCCGTACCATCTACCTGTGTGCGCATGGCGAGAA
 TGAGTACAACCTTGAGGGCAAGATTGGGGGCGACTCAGGCTTGTCCAGCAGAGGCAAGAAGTTCGCCAAT
 GCCCTGAGCAAGTTCGTAGAAGAACAGAATCTGAAGGACCTCCGTGTGTGGACCAGCCAGCTGAAAAGTA
 CCATTCAGACCGCGGAGGCCCTGAGGCTCCCCTACGAGCAGTGAAGGCACTCAACGAGATCGATGCTGG
 TGTGTGTGAGGAACTAACCTATGAGGAGATCAGAGATACCTACCTGAGGAGTACGCACTGCGTGAACAG
 GACAAGTACTACTATCGCTATCCACCGGAGAGTCCCTACCAGGATCTTGTCCAACGCCTGGAGCCTGTGA
 TCATGGAATTAGAGCGCCAAGAGAATGTATTGGTCATCTGTACCAGGCTGTTCTACGCTGCCTACTAGC
 CTACTTCTCGACAAGAGTGCAGAGGAGATGCCATACCTGAAATGTCCGCTCCACACTGTCTGAAACTG
 ACACCTGTGGCATATGGGTGCCGGTGGAGTCCATTTACTTGAATGTAGAATCGGTGAGCACACCCGGG
 AGAGGTGAGAGGATGCAAAGAAGGGACCTAACCCGCTCATGAGACGCAATAGTGTACCCCACTAGCCAG
 TCCCGAGCCACCAAAAAGCCTCGCATCAACAGCTTTGAGGAGCGTGTGGCTTCCACTTCTGCTGCCCTG
 CCAAGCTGCCTGCCCCGGAAGTGCCACGCAGCTGCCCGGACAAAACATGAAGAGCTCCCGAGCGGTG
 CCGACTTCCCAGAAGCAC

ACGCGTACGCGGCCGCTCGAG – GFP Tag – GTTTAA

Protein Sequence:

>MG227638 representing NM_133232
 Red=Cloning site Green=Tags(s)

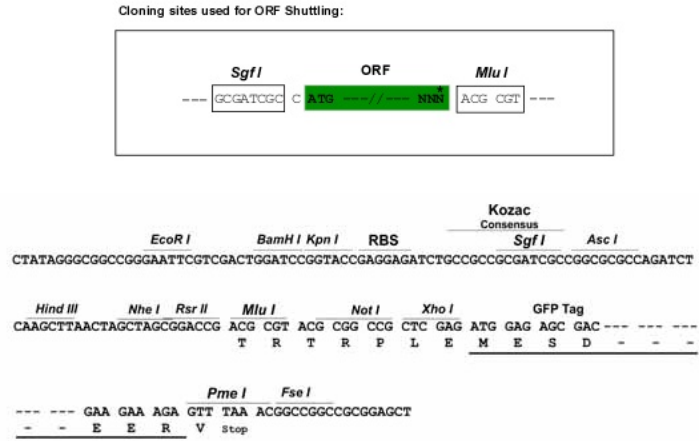
MPLELTQSRVQKIWVPVDHRPSLPRSCGPKLTNSPTVIVMVGLPARGKTYISKLLTRYLNWIGVPTKVFN
 VGEYRREAVKQYSSYNFFRPDNEEAMRVRKQCALAALRDVKSYLEKEGGQIAVFDAATNTTRERRHMILNF
 AKENDFKAFFIESVCDPTVVASNIMEVKISSPDYKDCNSAEAMDDFMKRINCYEASYQPLDPDKDRDL
 SLIKVIDVGRFRLVNRVQDHIQSRIVYYLMNIHVQPRTIYLCRHGENEYNLQGKIGGDSGLSSRGKFFAN
 ALSKFVEEQNLKDLRVWTSQKSTIQTAELRPLPYEQWKALNEIDAGVCEELTYEEIRDTYPEEYALREQ
 DKYYYYRYPTGESYQDLVQRLEPVIEMELERQENVLVICHQAVLRCLLAYFLDKSAEEMPYLKCPLHTVLKL
 TPVAYGCRVESIYLNVESVSTHRERSEDAKKGPNPLMRRNSVTPLASPEPTKKPRINSFEERVASTSAAAL
 PSCLPPEVPTQLPGQNMKSSRSADSSQKH

TRTRPLE – GFP Tag – V

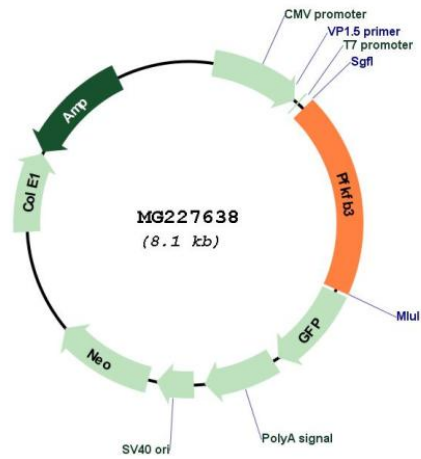
Restriction Sites:

Sgfl-MluI

Cloning Scheme:



Plasmid Map:



ACCN:	NM_133232
ORF Size:	1560 bp
OTI Disclaimer:	<p>Due to the inherent nature of this plasmid, standard methods to replicate additional amounts of DNA in E. coli are highly likely to result in mutations and/or rearrangements. Therefore, OriGene does not guarantee the capability to replicate this plasmid DNA. Additional amounts of DNA can be purchased from OriGene with batch-specific, full-sequence verification at a reduced cost. Please contact our customer care team at custsupport@origene.com or by calling 301.340.3188 option 3 for pricing and delivery.</p> <p>The molecular sequence of this clone aligns with the gene accession number as a point of reference only. However, individual transcript sequences of the same gene can differ through naturally occurring variations (e.g. polymorphisms), each with its own valid existence. This clone is substantially in agreement with the reference, but a complete review of all prevailing variants is recommended prior to use. More info</p>
OTI Annotation:	This clone was engineered to express the complete ORF with an expression tag. Expression varies depending on the nature of the gene.
Components:	The ORF clone is ion-exchange column purified and shipped in a 2D barcoded Matrix tube containing 10ug of transfection-ready, dried plasmid DNA (reconstitute with 100 ul of water).
Reconstitution Method:	<ol style="list-style-type: none"> 1. Centrifuge at 5,000xg for 5min. 2. Carefully open the tube and add 100ul of sterile water to dissolve the DNA. 3. Close the tube and incubate for 10 minutes at room temperature. 4. Briefly vortex the tube and then do a quick spin (less than 5000xg) to concentrate the liquid at the bottom. 5. Store the suspended plasmid at -20°C. The DNA is stable for at least one year from date of shipping when stored at -20°C.
RefSeq:	<u>NM_133232.3, NP_573495.2</u>
RefSeq Size:	5043 bp
RefSeq ORF:	1563 bp
Locus ID:	170768
Cytogenetics:	2 A1