

Product datasheet for **MG227625**

Prkcz (NM_001039079) Mouse Tagged ORF Clone

Product data:

Product Type:	Expression Plasmids
Product Name:	Prkcz (NM_001039079) Mouse Tagged ORF Clone
Tag:	TurboGFP
Symbol:	Prkcz
Synonyms:	AI098070; aPKCzeta; C80388; nPKC-zeta; Pkcz; R74924; zetaPKC
Mammalian Cell Selection:	Neomycin
Vector:	pCMV6-AC-GFP (PS100010)
E. coli Selection:	Ampicillin (100 ug/mL)



[View online »](#)

ORF Nucleotide Sequence:

>MG227625 representing NM_001039079
 Red=Cloning site Blue=ORF Green=Tags(s)

TTTTGTAATACGACTCACTATAGGGCGGCCGGGAATTCGTCGACTGGATCCGGTACCGAGGAGATCTGCC
 GCC**CGGATCGCC**

ATGCCAGCAGGACGGACCCCAAGATGGACCGGAGCGCGGCCGGTCCGTCTGAAGGCGCACTACGGCG
 GGGACATCCTGATTACCAGCGTGGATGCCATGACAACATTCAAGGACCTCTGTGAGGAAGTGCGAGACAT
 GTGTGGCCTGCACCAGCAGCACCCACTCACCTCAAGTGGGTGGACAGTGAAGGTGACCCTGTACTGTG
 TCCTCACAGATGGAGCTGGAGGAGGCCCTCCGCCTGGTCTGTGAGGGCAGGGACGAAGTGCATCATTC
 ATGTTTTCCCAAGCATCCAGAGCAGCCGGGATGCCCTTGTCTGGAGAAGACAAGTCCATCTACCGCCG
 TGGAGCCAGAAGATGGAGGAAGCTGTACCAGCCAACGGCCACCTTCCAAGCCAAGCGCTTAAACAGG
 GGAGCGTACTGCGGCCAGTGCAGCGAAAGGATATGGGGTCTCTCGAGGCAGGGCTACAGGTGCATCACT
 GCAAGCTGCTGGTCCATAAACGCTGCCACGTCTCGTCCCGCTGACCTGCAGGAGGCATATGGATTCTGT
 CATGCCTTCCAAGAGCCTCCAGTAGATGACAAGAACGATGGTGTAGACCTTCTTCAAGAAAAGTATGAT
 GGAATTGCTTATATTTCTTCATCTCGGAAACATGATAATATCAAAGATGATTCTGAGGACCTAAGCCTG
 TCATCGATGGGGTGGATGGGATCAAATCTCTCAGGGGCTGGGGCTGCAAGACTTCGACCTCATCAGAGT
 CATCGGGCGTGAAGCTATGCCAAGTCCCTCTGGTGGGTTGAAGAAAAACGACCAAGTTACGCCATG
 AAGGTGGTAAAGAAGGAGCTTGTCCACGACGACGAGGATATCGACTGGGTGCAGACAGAGAAAACATGTGT
 TTGAGCAGGCGTCCAGCAACCCCTTCTGGTGGCTTACACTCTGCTTCCAGACAACGAGCCGGTGTGT
 CCTGGTCATCGAGTATGTCAATGGCGGGACCTCATGTTCCACATGCAGAGGCAGAGAAAAGTCCAGAG
 GAGCATGCCAGGTTCTATGCTGCTGAGATCTGTATCGTCTCACTTCTTGCATGAGAGGGGATCATCT
 ACCGGGACCTAAAAGTGCACAACGCTCCTCTTGTGATGCCGACGGACACATTAAGCTGACGGACTACGGCAT
 GTGCAAGGAAGGTCTAGGCCCGGTGATACAACAAGCACTTTTTGTGGAACCCCGAACTATATCGCCCC
 GAAATCTGCGAGGAGAAGAGTACGGGTTACGCGTGGACTGGTGGGCACTGGGTGCTCTTATGTTTGAGA
 TGATGGCTGGGCGCTCCCCCTTTGACATCATCACGGACAACCCTGACATGAACACTGAAGACTACCTTTT
 CCAAGTTATCCTGAAAAGCCAATCCGGATTCCCCGTTTCTGTCTGTCAAGGCTCACACGCTTAAAA
 GGATTTTTAAATAAGGATCCCAAAGAGAGGCTTGGCTGCCGGCCACAGACTGGGTTTTCCGACATCAAGT
 CTCATGCTTTCTTCTGCAGCATAGACTGGGACCTGCTGAAAAGAAGCAGACCCTGCCTCCCTTCCAGCC
 CCAGATCACAGATGACTATGGCCTGGACAACCTTGGACACGAGTTCACCAGCGAGCTGTGCAGCTGACC
 CCAGATGATGAGGACGTATAAAGAGGATCGACCAGTCCGAATTTGAAGGCTTTGAGTACATCAACCCAC
 TTCTGCTGTCTGCTGAGGAGTCCGTG

ACGCGTACGCGGCCGCTCGAG – GFP Tag – GTTTAA

Protein Sequence:

>MG227625 representing NM_001039079
 Red=Cloning site Green=Tags(s)

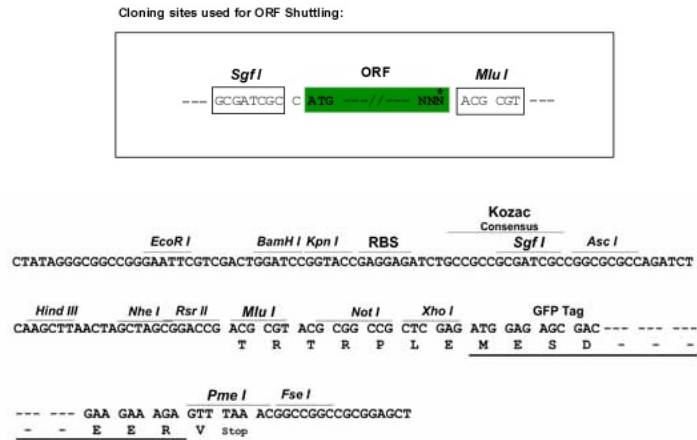
MPSRTDPKMDRSGGRVRLKAHYGGDILITSVDAMTTFKDLCEEVRDMCGLHQHPLTLKWVDSEGDPTV
 SSQMELEEAFLVLCQGRDEVLIHVFPSIPEQPGMPCGEDKSIYRRGARRWRKLYRANGHLFQAKRFNR
 GAYCGQCSEIWLGRSQGYRCINCKLLVHKRCHVLVPLTCRRHMDSVMPSQEPVDDKNDGVDLPSEETD
 GIAYISSRKHDNIKDDSEDLPVIDGVDGIKISQGLGLQDFDLIRVIGRGSYAKVLLVRLKKNQDIYAM
 KVVKKELVHDDDEDWVQTEKHVFEQASSNPFLVGLHSCFQTTSRFLVIEYVNGGDLFMHMQRQRKLE
 EHARFYAAEICIALNHLHERGIIYRDLKLDNVLLDADGHKLDYGMCKEGLGPGDSTFCGTPNYIAP
 EILRGEYGFVSDWWALGVLMFEMMAGRSPFDIITDNPDMNTEDYLFQVILEKPIRIPRFLSVKASHVLK
 GFLNKDPKERLGRPQTGFSDIKSHAFFCSIDWDLLEKKQTLPPFPQITDDYGLDNFDTQFTSEPVQLT
 PDDEDVIKRIDQSEFEGFEYINPLLLSAEESV

TRTRPLE – GFP Tag – V

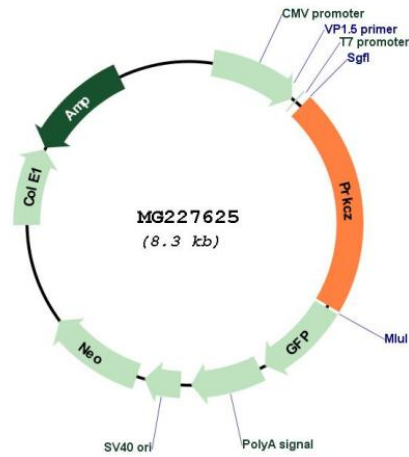
Restriction Sites:

Sgfl-MluI

Cloning Scheme:



Plasmid Map:



ACCN: NM_001039079

ORF Size: 1227 bp

OTI Disclaimer:	<p>Due to the inherent nature of this plasmid, standard methods to replicate additional amounts of DNA in E. coli are highly likely to result in mutations and/or rearrangements. Therefore, OriGene does not guarantee the capability to replicate this plasmid DNA. Additional amounts of DNA can be purchased from OriGene with batch-specific, full-sequence verification at a reduced cost. Please contact our customer care team at custsupport@origene.com or by calling 301.340.3188 option 3 for pricing and delivery.</p> <p>The molecular sequence of this clone aligns with the gene accession number as a point of reference only. However, individual transcript sequences of the same gene can differ through naturally occurring variations (e.g. polymorphisms), each with its own valid existence. This clone is substantially in agreement with the reference, but a complete review of all prevailing variants is recommended prior to use. More info</p>
OTI Annotation:	This clone was engineered to express the complete ORF with an expression tag. Expression varies depending on the nature of the gene.
Components:	The ORF clone is ion-exchange column purified and shipped in a 2D barcoded Matrix tube containing 10ug of transfection-ready, dried plasmid DNA (reconstitute with 100 ul of water).
Reconstitution Method:	<ol style="list-style-type: none"> 1. Centrifuge at 5,000xg for 5min. 2. Carefully open the tube and add 100ul of sterile water to dissolve the DNA. 3. Close the tube and incubate for 10 minutes at room temperature. 4. Briefly vortex the tube and then do a quick spin (less than 5000xg) to concentrate the liquid at the bottom. 5. Store the suspended plasmid at -20°C. The DNA is stable for at least one year from date of shipping when stored at -20°C.
RefSeq:	<u>NM_001039079.1, NP_001034168.1</u>
RefSeq Size:	4103 bp
RefSeq ORF:	1230 bp
Locus ID:	18762
Cytogenetics:	4 86.17 cM

Gene Summary:

Calcium- and diacylglycerol-independent serine/threonine-protein kinase that functions in phosphatidylinositol 3-kinase (PI3K) pathway and mitogen-activated protein (MAP) kinase cascade, and is involved in NF-kappa-B activation, mitogenic signaling, cell proliferation, cell polarity, inflammatory response and maintenance of long-term potentiation (LTP). Upon lipopolysaccharide (LPS) treatment in macrophages, or following mitogenic stimuli, functions downstream of PI3K to activate MAP2K1/MEK1-MAPK1/ERK2 signaling cascade independently of RAF1 activation. Required for insulin-dependent activation of AKT3, but may function as an adapter rather than a direct activator. Upon insulin treatment may act as a downstream effector of PI3K and contribute to the activation of translocation of the glucose transporter SLC2A4/GLUT4 and subsequent glucose transport in adipocytes. In EGF-induced cells, binds and activates MAP2K5/MEK5-MAPK7/ERK5 independently of its kinase activity and can activate JUN promoter through MEF2C. Through binding with SQSTM1/p62, functions in interleukin-1 signaling and activation of NF-kappa-B with the specific adapters RIPK1 and TRAF6. Participates in TNF-dependent transactivation of NF-kappa-B by phosphorylating and activating IKBKB kinase, which in turn leads to the degradation of NF-kappa-B inhibitors. In migrating astrocytes, forms a cytoplasmic complex with PARD6A and is recruited by CDC42 to function in the establishment of cell polarity along with the microtubule motor and dynein. In association with FEZ1, stimulates neuronal differentiation in PC12 cells. In the inflammatory response, is required for the T-helper 2 (Th2) differentiation process, including interleukin production, efficient activation of JAK1 and the subsequent phosphorylation and nuclear translocation of STAT6. May be involved in development of allergic airway inflammation (asthma), a process dependent on Th2 immune response. In the NF-kappa-B-mediated inflammatory response, can relieve SETD6-dependent repression of NF-kappa-B target genes by phosphorylating the RELA subunit at 'Ser-311'. In vein endothelial cells treated with the oxidant peroxynitrite, phosphorylates STK11 leading to nuclear export of STK11, subsequent inhibition of PI3K/Akt signaling, and increased apoptosis. Phosphorylates VAMP2 in vitro (By similarity).[UniProtKB/Swiss-Prot Function]