

Product datasheet for **MG227622**

Pfkfb3 (NM_001177752) Mouse Tagged ORF Clone

Product data:

Product Type:	Expression Plasmids
Product Name:	Pfkfb3 (NM_001177752) Mouse Tagged ORF Clone
Tag:	TurboGFP
Symbol:	Pfkfb3
Synonyms:	E330010H22Rik; iPFK-2; uPFK-2
Mammalian Cell Selection:	Neomycin
Vector:	pCMV6-AC-GFP (PS100010)
E. coli Selection:	Ampicillin (100 ug/mL)



[View online »](#)

ORF Nucleotide Sequence:

>MG227622 representing NM_001177752
 Red=Cloning site Blue=ORF Green=Tags(s)

TTTTGTAATACGACTCACTATAGGGCGGCCGGAATTCGTCGACTGGATCCGGTACCGAGGAGATCTGCC
 GCC**CGGATCGCC**

ATGCCGTTGGAAGTACCCAGAGCCGGGTACAGAAGATCTGGGTGCCCGTCGATCACCGACCTCGTTGC
 CCAGATCCTGTGGGCGAAGCTGACCAACTCCCAACCGTGATTGTGATGGTGGGGCTCCCAGCCGGGG
 TAAGACTTACATCTCAAGAAGCTGACTCGCTACCTCAACTGGATAGGTGTTCCAACGAAAGTGTTCAAT
 GTGGGAGAGTATCGGCGTGAGGCTGTGAAGCAGTACAGCTTTACAACCTCTCCGCCCTGACAATGAGG
 AAGCCATGAGAGTCCGAAACAGTGTGCCTTAGCTGCCCTGAGAGATGTCAAAGCTACCTGACAAAGGA
 AGGTGGACAGATTGCAGTTTTTGTGCCACCAATACAACCTAGAGAAAGAAGGCACATGATCCTTAATTTT
 GCCAAAGAAAATGACTTCAAGGCATTTTTTCATCGAGTCGGTCTGTGACGACCCTACTGTTGTGCCCTCCA
 ACATCATGGAAGTAAAACTCCAGCCCGGATTACAAAGACTGCAACTCAGCAGAAGCCATGGACGACTT
 CATGAAGAGAATCAATTGCTATGAAGCCAGCTACCAGCCTTTGACCCTGATAAATGTGACAGGGACTTG
 TCACTCATCAAAGTGATTGATGTTGGCCGGAGGTTCTTGGTGAACAGAGTGCAGGACCACATCCAGAGCC
 GAATTGTATACTACCTGATGAACATCCAGTGCAGCCCGTACCATCTACCTGTGTGCGCATGGCGAGAA
 TGAGTACAACCTTGAGGGCAAGATTGGGGGCGACTCAGGCTTGTCCAGCAGAGGCAAGAAGTTCGCCAAT
 GCCCTGAGCAAGTTCGTAGAAGAACAGAATCTGAAGGACCTCCGTGTGTGGACCAGCCAGCTGAAAAGTA
 CCATTCAGACCGCGGAGGCCCTGAGGCTCCCCTACGAGCAGTGAAGGCACTCAACGAGATCGATGCTGG
 TGTGTGTGAGGAACTAACCTATGAGGAGATCAGAGATACCTACCTGAGGAGTACGCACTGCGTGAACAG
 GACAAGTACTACTATCGCTATCCACCGGAGAGTCCCTACCAGGATCTTGTCCAACGCCTGGAGCCTGTGA
 TCATGGAATTAGAGCGCCAAGAGAATGTATTGGTCATCTGTACCAGGCTGTTCTACGCTGCCTACTAGC
 CTACTTCCTCGACAAGAGTGCAGAGGAGATGCCATACCTGAAATGTCCGCTCCACACTGTCTGAAACTG
 ACACCTGTGCATATGGGTGCCGGTGGAGTCCATTTACTTGAATGTAGAATCGGTGAGCACACCCGGG
 AGAGGTACAGAAACATGAAGAGCTCCCGGAGCGGTGCCGACTCTCCAGAAGCAC

ACGCGTACGCGGCCGCTCGAG – GFP Tag – GTTTAA

Protein Sequence:

>MG227622 representing NM_001177752
 Red=Cloning site Green=Tags(s)

MPELELTQSRVQKIWVPVDHRPSLPRSCGPKLTNSPTVIVMVGLPARGKTYISKKLTRYLNWIGVPTKVFN
 VGEYRREAVKQYSSYNFRPDNEEAMRVRKQCALAALRDVKSYLEKEGGQIAVFDATNTTRERRHMLNF
 AKENDFKAFFIESVDDPTVVASNIMEVKISSPDYKDCNSAEAMDDFMKRINCYEASYQPLDPDKDRDL
 SLIKVIDVGRFLVNRVQDHIQSRIVYYLMNIHVQPRTIYLCRHGENEYNLQKIGGDSGLSSRGKFFAN
 ALSKFVEEQNLKDLRVWTSQKSTIQTAELRLPYEQWKALNEIDAGVCEELTYEEIRDTYPEEYALREQ
 DKYYRYPTGESYQDLVQRLEPVMELERQENVLVICHQAVLRCLLAYFLDKSAEEMPYLKPLHTVLKLL
 TPVAYGCRVESIYLNVESVSTHRERSENKSSRSRGADSSQKH

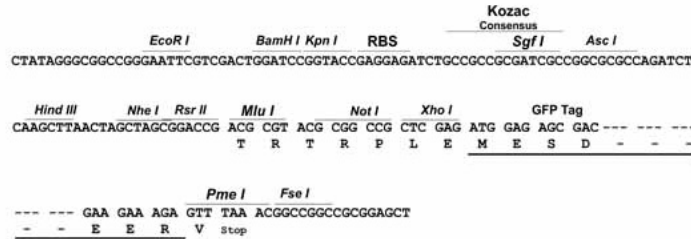
TRTRPLE – GFP Tag – V

Restriction Sites:

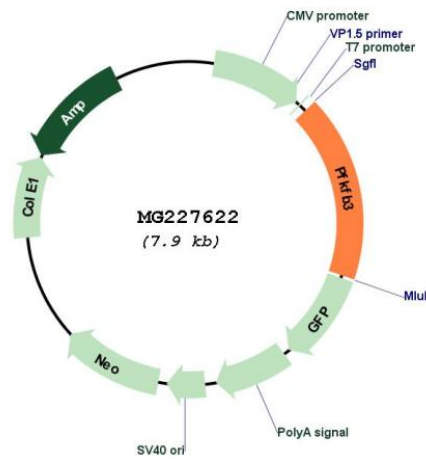
SgfI-MluI

Cloning Scheme:

Cloning sites used for ORF Shutting:



Plasmid Map:



ACCN: NM_001177752

ORF Size: 1386 bp

OTI Disclaimer:	<p>Due to the inherent nature of this plasmid, standard methods to replicate additional amounts of DNA in E. coli are highly likely to result in mutations and/or rearrangements. Therefore, OriGene does not guarantee the capability to replicate this plasmid DNA. Additional amounts of DNA can be purchased from OriGene with batch-specific, full-sequence verification at a reduced cost. Please contact our customer care team at custsupport@origene.com or by calling 301.340.3188 option 3 for pricing and delivery.</p> <p>The molecular sequence of this clone aligns with the gene accession number as a point of reference only. However, individual transcript sequences of the same gene can differ through naturally occurring variations (e.g. polymorphisms), each with its own valid existence. This clone is substantially in agreement with the reference, but a complete review of all prevailing variants is recommended prior to use. More info</p>
OTI Annotation:	This clone was engineered to express the complete ORF with an expression tag. Expression varies depending on the nature of the gene.
Components:	The ORF clone is ion-exchange column purified and shipped in a 2D barcoded Matrix tube containing 10ug of transfection-ready, dried plasmid DNA (reconstitute with 100 ul of water).
Reconstitution Method:	<ol style="list-style-type: none"> 1. Centrifuge at 5,000xg for 5min. 2. Carefully open the tube and add 100ul of sterile water to dissolve the DNA. 3. Close the tube and incubate for 10 minutes at room temperature. 4. Briefly vortex the tube and then do a quick spin (less than 5000xg) to concentrate the liquid at the bottom. 5. Store the suspended plasmid at -20°C. The DNA is stable for at least one year from date of shipping when stored at -20°C.
RefSeq:	<u>NM_001177752.1, NP_001171223.1</u>
RefSeq Size:	4869 bp
RefSeq ORF:	1389 bp
Locus ID:	170768
Cytogenetics:	2 A1