

Product datasheet for **MG227613**

Abcc2 (NM_013806) Mouse Tagged ORF Clone

Product data:

Product Type:	Expression Plasmids
Product Name:	Abcc2 (NM_013806) Mouse Tagged ORF Clone
Tag:	TurboGFP
Symbol:	Abcc2
Synonyms:	Abc30; AI173996; Cmoat; cMRP; Mrp2
Mammalian Cell Selection:	Neomycin
Vector:	pCMV6-AC-GFP (PS100010)
E. coli Selection:	Ampicillin (100 ug/mL)
ORF Nucleotide Sequence:	>MG227613 representing NM_013806 Red=Cloning site Blue=ORF Green=Tags(s)

TTTTGTAATACGACTCACTATAGGGCGGCCGGAATTCGTCGACTGGATCCGGTACCGAGGAGATCTGCC
GCC**CGATCGCC**

ATGGACGAATTCTGCAACTCTACTTTTTGGAATCTCTCATTATTGAAAAGTCCGGAAGCCGACCTGCCTC
TTTGTGGTGAACAACTGTTCTTGTGTGGATTCCCTTGGGCTTTCTTTGGCTCTTGGCGCCTTGGCAACT
TTACAGAATATACAGATCCAGGACCAAGAGATTGCTATAACTAAATTCTACCTTGCCAAGCAGGTGTT
GTTGTGTGCTTCTTATTTAGCAGCCATAGACCTGTCTTGCCTCACAGAAGATACTGGACAAGCCA
CAATTCCTCTGTAAATATACAAATCCAATTCTACCTATGCCTTGGCTCCTGGTGTGGTGATCCA
ACACTGCAGGCAATGCTGTATACAGAAGAATTCTGGTTCCTGTCCATGTTCTGGATTCTCTCTATTA
TGTGGCATATTCCAGTTTCAGACTCTGATACGAGCACTCCTGCAGGATAGCAAGTCCAACATGACCTATT
CCTGCCTGTTCTCGTCTCCTATGGTTCCAGATTGTCATTTGATCCTTTAGCCTTTTTCAGAATCAAG
CGACTCAACACACGCCCCATCAGCTACAGCTTCATTTCTGAGTAGCGTTACGTTTGTGGTATGACAGC
ACTGTTCTGAAAGTTACAAGCATCCATTGACAATAGAAGATGTGTGGGATATTGAAGAAAATCTTAAAG
CCAAGTCACTCACCAGCAAGTTAAGACGATCATGACAAAGGACCTGCAGAAAGCCAGGCAGGCTCTTCA
GAGGCGGCTGAAGAAGTCCAGCAGAGCCCTGAGGGCACGTACACGGATTGACCAAGAAGCAGAGTCAG
AGCCAAGATGTCCTTGTCTGGAAGACTCGAAAAAGAAGAAAAGTCTGAGGCCACCAAGACTTTC
CCAAATCCTGGTTGGTGAAGGCTCTTCAAAAGGTTCTACGTGGTATCCTGAAGTCATTTATTCTGAA
ATTAGCACATGATATTCTTTTGTCTGAATCCTCAGCTGCTGAAATTTCTCATTGGCTTCTGAAAGAC
CCTGACTCATATCCGTGGGTTGGATATATCTATGCAATCCTAATGTTCTCTGTGACTCTCATCCAGTCTT
TCTTCTCAGTGTTATTTTCAATTTTGTGGTGGGAAAGTGTACGGACAACCATCATAGCTTTC
CGTATATAAGAAGGCACTAACCCTATCTAAGTGGCTAGGAGGCAGTACACGATTGGAGAGACGGTGAAC
TTGATGTCTGTAGATTCCAGAAGCTAATGGACGTGACCAACTACATACACTGCTGTGGTCCAGTGT
TACAGATTGCTTGTCCATTTCTTCTGTGGAGAGGTTGGGACCTTCGATTTAGCAGGTGTTGGCT
TATGGTCTCCTGGTCCAGTTAATGGCGTCTGGCTACCAAGATCAGGAAAATTCAGGTCCAGAATATG



[View online >](#)

AAGAATAAAGACAAACGCTTAAAAATCATGAATGAGATTCTTAGTGGGATTAAGATCCTGAAACTTTG
 CCTGGGAACCTTCCTTTAAAGAGCAAGTGAACAGCATTGGAAGAAAGAACTCAGGAACTTGCTGCGCTT
 CAGCCAGCTGCAGACGATTTTGATTTTCATCTTACACCTAACTCCAACCTGGTGTCCGTGATCACATTT
 TCTGTTTACGTCTGGTGGATAGTCAAAATGTTTTGAACGCGGAGAAGGCTTTCACCTCCATCACCTCT
 TCAATATCCTGCGCTTTCCTCTGGCCATGCTTCCCATGGTATCTCTTCCAGTATCCAGGCCAGCGTCTC
 TGTAGACCGGCTGGAGCAGTACCTGGGAAGCGATGATCTGGACTGTCTGCCATTCGCAATGTCTGCCAT
 TTTGATAAAGCTGTGCAGTTCTCAGAAGCCTCTTTACTTGGGACCGGACTTGGAAAGCCACAATCCAAG
 ATGTGAACCTGGACATAAAACCAGGCCAACTGGTGGCTGTGGTGGGCACTGTAGGCTCTGGGAAGTCCCTC
 TTTGATATCAGCCATGCTGGGAGAAATGGAGAATGTCCATGGGCATATCACCATCAAGGGCTCCATAGCC
 TACGTCCCTCAGCAGGCCTGGATTGAGAACGGGACCATCAAAGATAACATCCTGTTTGGGTGAGAATACG
 ATGAAAAGAAAGTACCAGCGAGTTATCGAAGCGTGCCTCTCCTCCAGACTTGGAAATGTTGCTGGAGG
 AGACATGGCTGAGATCGGAGAGAAGGTATAAATCTCAGTGGCGGTGAGAAGCATCGAGTCAAGCTGGCC
 CGGGCCACCTATCAAGATGCAGACATCTATATTCTAGACGACCCCTGTCCGCTGTGGACACTCACGTGG
 GAAAACACATTTTCAACAAGTTGTGGGCCCAATGGCCTGTGAGCGGCAAGACTCGGATCTTGGTTAC
 ACATGGCATTCACTTCTCCCAAGTGGATGAGATTGTCGTTCTGGGAAAGGCACCATCTTAGAGAAG
 GGATCCTATAGTGACCTGATGGACAAGAAAGGAGTGTTCGCTAAGAACTGGAAAGACATTCATGAAGCATT
 CCGGACCTGAAGGAGAGGCTACAGTTCGATAACGACAGTGAAGGAGGATGGTACTGTGGGCTGATCCC
 AACTGTGGAGGAAATTCCTGACGATGCAGCTTCCCTGACCATGAGAAGGGAGAACAGCCTTCGCGGAACA
 CTGAGCCCGAGCTCTAGTCCCGCAGCAGGCGTGGGAAGTCCCTCAAAGCTCCTTGAAAATTAAGAGTG
 TGAATGCCTTGAATAAGAAGGAGGAAAGTGTGAAAGGACAAAACTAATTAAGAAGGAAATTTGTGAAAC
 TGGGAAGGTAAGTTCTCCATCTACCTGAAATATCTGCAGGCGGTAGGATGGTGGTCCCTGCTCTTCATC
 GTCATCTTCTACGTATTGAACTATGTGGCTTTTATTGGCACTAACCTCTGGCTGAGTGTGGACAGTG
 ACTGTGAAAAACAGAATGGGACCACAATTCACCTTCTCAGAGGGACATGAGAATCGGGCTTTTGGAGC
 TCTGGGAATAGCACAAAGGTATATTTTTGCTTAGTTCAAGTCTATGGAGTATATATGCTTGCAGAAATGCA
 TCCAAAACCTTTGCACAGGCGAGCTGTTAACCAACATTCTCCGCGCACCCATGAGTTTTTTTACACAACTC
 CCACAGGCCGGATTGTGAACAGATTTGCCGGGATATTTCTACGGTGGACGACACACTCCCCAGACTTT
 GCGAAGCTGGCTGCTGTGTTTCTCGGCATAGTTAGCACTCTCGTATGATCTGCATGGCCACCCCATC
 TTCATCATCATCATCCCTCTCAGCATTCTCTATGTATCTGTGCAGGTGTTTTATGTGGCTACATCCC
 GCCAGCTGAGACGGCTGGATTCTGTACCAAACTCCGATCTATTCTCACTTTAGTGAGACTGTCTCTGG
 TTTGCCTGTTATTCGGGCTTTGAGCACCAGCAGAGATTTCTAGCAAACAGTGAAGCAGATTGACACC
 AACCAGAAATGCGTCTTTTCTGGATTACCTCCAACCGGTGGCTTGCATTGCGCTGGAGCTGGTTGGAA
 ACCTGATTGTCTTCTGCTCGGCCTTGTCTGGTTATTTATAAGAATTCCTTAACCGGGGCACTGTGGG
 CTTTGTCTGTCCAACGCCCTCAACATCACAAAAACCCTGAACTGGCTAGTGAGGATGACGTGAGAAGTA
 GAGACCAACATCGTGGCTGTTGAGCGAATAAATGAATACATAAATGTGGATAATGAGGCGCGGTGGGTGA
 CCGACAAGAAGCCTCCGGCAGATTGGCCAAAAAAGGTGAGATCCAGTTCACAACTATCAAGTGGCGTA
 TCGGCCGGAGCTGGATCTGGTCTGAAAGGGATTACTTGAACATCAAGAGCACCGAGAAGGTGGTGTG
 GTGGGCAGGACCGGAGCTGGAAAATCATCCCTCACAACTGCCTCTTCAAGATCTTAGAGTCTGCAGGTG
 GCCAGATCATCATTGATGGGATTGATATTGCCTCCATTGGACTGCACGACCTTCGAGGGAGACTGACCAT
 CATTCCCAGGACCCCATTTTGTCTCTGGGAATCTGAGGATGAATCTCGACCCTTCAACAAATACTCG
 GATGAGGAGATCTGGAGGCCCTGGAATTGGCTCATCTCAAATCCTTTGTGGCTGGCTGCAACTTGGGT
 TGCTCCATGAAGTGACAGAGGGCGGTGACAACCTGAGCATAGGGCAGAGGCGACTCCTATGCCTGGGTAG
 GGCCGTGCTTCGAAAATCCAAAATCCTGGTCTGGACGAAGCCACAGCCGAGTGGATCTAGAGACGGAT
 AGCCTCATTGAGACGACCATCCGGAACGAGTTCTCCAGTGCACGGTCACTACTCGCACACAGGCTGC
 ACACCATCATGGACAGTGAAGATAATGGTCTAGACAGCGCAAGATTGTTGAATACGGCAGTCTGGA
 AGAACTGTGTTCAATATGGGTCCCTTCTACTTGTGATGGCAAGGAAGCCGGCATTGAAAGTGTGAACCA
 CCGGAGCTC

ACGCGTACGCGGCCGCTCGAG - GFP Tag - GTTTAA

Protein Sequence: >MG227613 representing NM_013806
 Red=Cloning site Green=Tags(s)

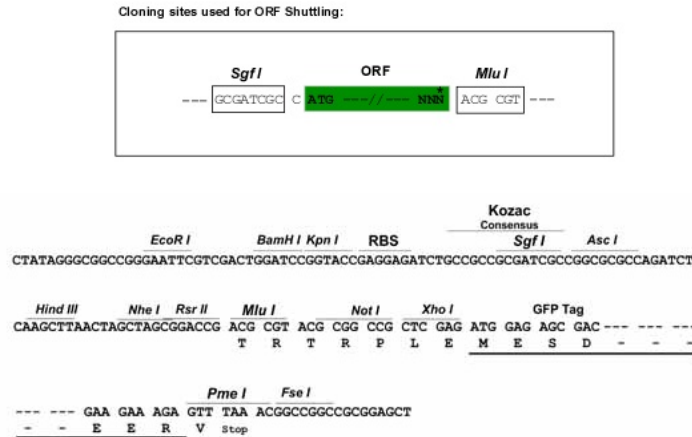
```

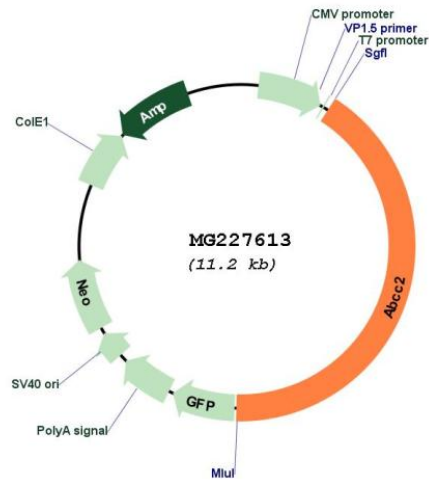
MDEFNCSTFWNL SLLKSP EADLPLCFEQTVL VWIPLGFLWLLAPWQL YRIYRSRTKRFAITK FYLAKQVF
VVCLLILAADL SLALTEDT GQATIPPVKYTNPIL YLCTWLLVLVIQHCRQCCI QKNSWFLSMFWILSLL
CGIFQFQTLIRALL QDSKSNM TYSC LFFVSYGFQIVILILSAFSESSDSTHAPSATASFLSSVTF SWYDS
TVLKG YKHPLTIEDVWDIEENL KAKSLTSKFKTIMTKDLQKARQALQRRLKKSQQSPEGTS HGLTKKQSQ
SQDVLVLEDSK KKKKSEATKDFPKSWLVKALFKTFYVYVILKSFILKLAHDILLFLNPQLLKFLIGFVKD
PDSYPWVG YIYAILMFSVTLIQSFFLQCYFQFCFVLGMTVRTTIIASVYK KALTLSNLRARQYTIGETVN
LMSVDSQKLM DVTNYIHLLWSSVLQIALSIFFLWRELGPSILAGVGLMVLLVPVNGVLATKIRKIQVQNM
KNKDKRLKIMNEILSGIKILKYFAWEP SFKEQVNSIRKKELRNLLRFSQLQTILIFILHLTPTLVSVITF
SVYVLDV SQNVLNAEKAFTSITL FNILRFPLA MLPMVISSVIQASVSDRLEQYLGSDDLDSAIRHVCH
FDKAVQFSEASF TWDRDLEATI QDVNLDIKPGQLVAVVGT VSGSKSSLISAMLGEMENVHGHIITKGSIA
YVPOQAWIQNGTIKDNILFGSEYDEKKYQRVIEACALLPDLEMLPGGDMAEIGEKGINLSGGQKHRVSLA
RATYQDADIYILD DPLSAVDTHVGKHI FNKVVGPNGLLSGKTRILVTHG IHFLPQVDEIVVLGKG TILEK
GSYSDLMDKKG VFAKNWKT F MKHSGPEGEATVDNDSEEDGDCGLIPTVEEIPDDAASL TMRRENSLRRT
LSRSSRSGSRRGKSLKSSLKIKSVNALNKKEEVVKGQKLIKKEFVETGKVKFSIYLKYLQAVGWSSLLFI
VIFYVLYVAFI GTNLWLSAWTSDSEKQNGTDNSPSQRDMRIGVFGALGIAQGI FLLSSLSWSIYACRNA
SKTLHRQLL TNILRAPMSFFDTTPTGRI VNRFA GDI STVDDTL PQT LRSWLLCFFGIVSTLVMICMATPI
FIIIIIPLSILYVSVQVFYVATSRQLRRLDSVTKSPIYSHFSETVSGLPVIRAFEHQQRFLANSEKQIDT
NQKCVFSWITSNRWLAIRLELVGNLIVFCSALLVIYKNSLTGDTVGFVLSNALNITQTLNWLVRMTSEV
ETNIVAVERINEYINVDNEAPWVTDK KPPADWPKKGEIQFN NYQVRYRPELDLVLKGITCNIKSTEKVGV
VGRTVAGKSSLTNCLFRILE SAGGQIIIDGIDIASIGLHDLRGRLTIIPQDPILFSGNLRMNLDPFNKYS
DEEIWRAL ELAHLKSFVAGLQLGLLHEVTEGGDNLSIGQRQLLCLGRAVLRKSKILVLDEATAAVDLETD
SLIQTTIRNEFSQCTVITIAHRLHTIMDSKIMVLDSGKIVEYGSPEELL SNMGPFFYLMAKEAGIESVNH
TEL
  
```

TRTRPLE - GFP Tag - V

Restriction Sites: SgfI-MluI

Cloning Scheme:



Plasmid Map:


ACCN: NM_013806

ORF Size: 4629 bp

OTI Disclaimer: The molecular sequence of this clone aligns with the gene accession number as a point of reference only. However, individual transcript sequences of the same gene can differ through naturally occurring variations (e.g. polymorphisms), each with its own valid existence. This clone is substantially in agreement with the reference, but a complete review of all prevailing variants is recommended prior to use. [More info](#)

OTI Annotation: This clone was engineered to express the complete ORF with an expression tag. Expression varies depending on the nature of the gene.

Components: The ORF clone is ion-exchange column purified and shipped in a 2D barcoded Matrix tube containing 10ug of transfection-ready, dried plasmid DNA (reconstitute with 100 ul of water).

Reconstitution Method:

1. Centrifuge at 5,000xg for 5min.
2. Carefully open the tube and add 100ul of sterile water to dissolve the DNA.
3. Close the tube and incubate for 10 minutes at room temperature.
4. Briefly vortex the tube and then do a quick spin (less than 5000xg) to concentrate the liquid at the bottom.
5. Store the suspended plasmid at -20°C. The DNA is stable for at least one year from date of shipping when stored at -20°C.

RefSeq: [NM_013806.2](#), [NP_038834.2](#)

RefSeq Size: 5389 bp

RefSeq ORF: 4632 bp

Locus ID: 12780

UniProt ID: [Q8VI47](#)

Cytogenetics: 19 36.67 cM

Gene Summary: The membrane-associated protein encoded by this gene is a member of the superfamily of ATP-binding cassette (ABC) transporters. ABC proteins transport various molecules across extra- and intra-cellular membranes. ABC genes are divided into seven distinct subfamilies (ABC1, MDR/TAP, MRP, ALD, OABP, GCN20, White). This protein is a member of the MRP subfamily which is involved in multi-drug resistance. This protein functions in the canalicular surface of the hepatocyte and in biliary transport, and appears to contribute to drug resistance in mammalian cells. Several different mutations in the human gene have been observed in patients with Dubin-Johnson syndrome (DJS), an autosomal recessive disorder characterized by conjugated hyperbilirubinemia. Alternative splice variants have been observed for this gene; however, they have not been fully described. [provided by RefSeq, Jul 2008]