

Product datasheet for **MG227605**

Pitx2 (NM_001042502) Mouse Tagged ORF Clone

Product data:

Product Type: Expression Plasmids
Product Name: Pitx2 (NM_001042502) Mouse Tagged ORF Clone
Tag: TurboGFP
Symbol: Pitx2
Synonyms: 9430085M16Rik; Brx1; Brx1b; Munc30; Otlx2; Ptx2; Rieg
Mammalian Cell Selection: Neomycin
Vector: pCMV6-AC-GFP (PS100010)
E. coli Selection: Ampicillin (100 ug/mL)
ORF Nucleotide Sequence: >MG227605 representing NM_001042502
 Red=Cloning site Blue=ORF Green=Tags(s)

TTTTGTAATACGACTCACTATAGGGCGGCCGGAATTCGTCGACTGGATCCGGTACCGAGGAGATCTGCC
 GCC**CGATCGCC**

ATGAAGTGCATGAAAGGCCCGCTGCCCTTGGAGCACCGAGCAGCCGGGACTAAGCTGTCGGCCGCCTCT
 CACCCTTCTGTCACCATCCCCAGGCGTTAGCCATGGCTTCGGTCTAGCTCCTGGCCAGCCCCGCTCCTT
 GGACTCCTCCAAACATAGACTGGAGGTGCATACAATCTCCGATACTTCCAGCCCTGAAGTCGCAGAGAAA
 GATAAGGGCCAGCAAGGAAAGAATGAGGATGTGGGCGCCGAGGACCCGTCGAAGAAGAAGCGGCAACGCC
 GGCAGAGGACTCATTTCCTAGCCAGCAGCTGCAGGAGCTGGAAGCCACTTCCAGAGAAACCGCTACCC
 AGACATGTCCACTCGCAAGAAATCGCCGTGTGGACCAACCTTACGGAAGCCCGAGTCCGGGTTTGGTTC
 AAGAATCGCCGGGCCAAATGGAGAAAGCGGGAACGCAACCAGCAGGCCGAGCTGTGCAAGAATGGCTTTG
 GGCCGAGTTCAACGGGCTCATGCAGCCCTACGATGACATGTACCCCGGCTATTCGTACAACAATTGGGC
 TGCCAAGGGCCTCACGTCAGCGTCTGTGCCCAAGAGCTTCCCTTCTTCAACTCCATGAACGTCAT
 CCCCTGTCTCTCAGAGTATGTTTTCCCGCCAACTCCATCTCATCTATGAGTATGTCGTCAGCATGG
 TGCCCTCCGCGGTGACCGCGTCCCGGGCTCCAGCCTCAATAGCCTGAATAACTGAACAACCTGAGCAG
 CCCGTGCTGAATCCGCGGTGCCACGCCCGCTGTCTTACGCGCCCGGACTCCTCCGTACGTTTAT
 AGGGACACATGTAACCGAGCCTGGCCAGCCTGAGACTGAAAGCAAAGCAGCACTCCAGCTCGGCTACG
 CCAGCGTGCAGAACCCGGCCTCAACCTGAGTGCTTCCAGTATGCAGTCGACCGCCGGTG

ACGCGTACGCGGCCGCTCGAG - GFP Tag - GTTTAA



[View online »](#)

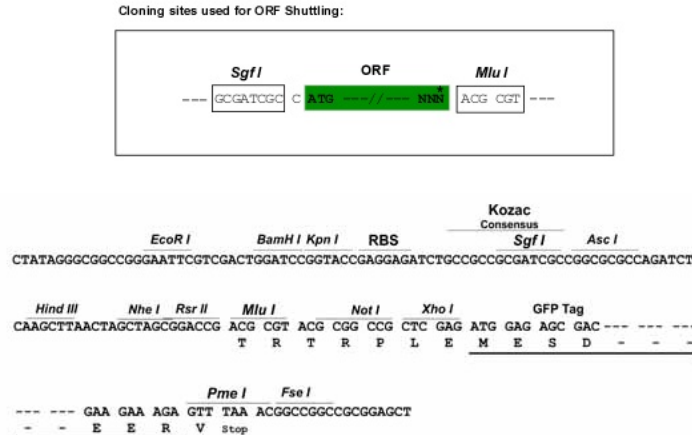
Protein Sequence: >MG227605 representing NM_001042502
 Red=Cloning site Green=Tags(s)

MNCMKGPLLEHRAAGTKLSAASSPFCHHPQALAMASVLAPGQPRSLDSSKHRLEVHTISDTSPEVAEK
 DKGQQGKNEDVGAEDPSKKKRQRRQRTHTFSQQLQELEATFQRNRYPDMSTREEIAVWNTLFEARVRVWF
 KNRRAKWRKRERNQQAELCKNGFGPQFNGLMQPYDDMYPGYSYNNWAAKGLTSASLSTKSFPPFNMSMNVN
 PLSSQSMFSPNSISSMSMSSSMVPSAVTGVPGSSLSLNNLNLSSPSLNSAVPTPACPYAPPTPPYVY
 RDTCNSSLASLRLKAKQHSSFGYASVQNPASNLSACQYAVDRPV

TRTRPLE - GFP Tag - V

Restriction Sites: SgfI-MluI

Cloning Scheme:



ACCN: NM_001042502

ORF Size: 972 bp

OTI Disclaimer: The molecular sequence of this clone aligns with the gene accession number as a point of reference only. However, individual transcript sequences of the same gene can differ through naturally occurring variations (e.g. polymorphisms), each with its own valid existence. This clone is substantially in agreement with the reference, but a complete review of all prevailing variants is recommended prior to use. [More info](#)

OTI Annotation: This clone was engineered to express the complete ORF with an expression tag. Expression varies depending on the nature of the gene.

Components: The ORF clone is ion-exchange column purified and shipped in a 2D barcoded Matrix tube containing 10ug of transfection-ready, dried plasmid DNA (reconstitute with 100 ul of water).

Reconstitution Method:

1. Centrifuge at 5,000xg for 5min.
2. Carefully open the tube and add 100ul of sterile water to dissolve the DNA.
3. Close the tube and incubate for 10 minutes at room temperature.
4. Briefly vortex the tube and then do a quick spin (less than 5000xg) to concentrate the liquid at the bottom.
5. Store the suspended plasmid at -20°C. The DNA is stable for at least one year from date of shipping when stored at -20°C.

RefSeq: [NM_001042502.2](#)

RefSeq Size: 2309 bp

RefSeq ORF: 975 bp

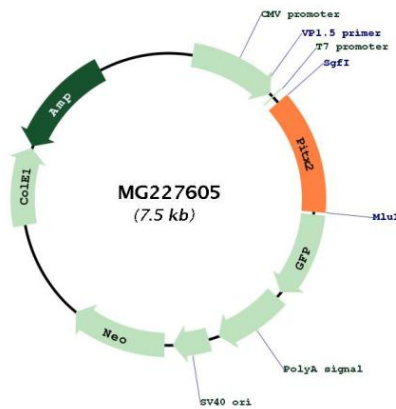
Locus ID: 18741

UniProt ID: [P97474](#)

Cytogenetics: 3 57.84 cM

Gene Summary: Controls cell proliferation in a tissue-specific manner and is involved in morphogenesis. During embryonic development, exerts a role in the expansion of muscle progenitors. May play a role in the proper localization of asymmetric organs such as the heart and stomach. Isoform Ptx2c is involved in left-right asymmetry the developing embryo.[UniProtKB/Swiss-Prot Function]

Product images:



Circular map for MG227605