

Product datasheet for **MG227574**

Prx (NM_198048) Mouse Tagged ORF Clone

Product data:

Product Type:	Expression Plasmids
Product Name:	Prx (NM_198048) Mouse Tagged ORF Clone
Tag:	TurboGFP
Symbol:	Prx
Synonyms:	L-Periaxin
Mammalian Cell Selection:	Neomycin
Vector:	pCMV6-AC-GFP (PS100010)
E. coli Selection:	Ampicillin (100 ug/mL)
ORF Nucleotide Sequence:	>MG227574 representing NM_198048 Red=Cloning site Blue=ORF Green=Tags(s)

TTTTGTAATACGACTCACTATAGGGCGGCCGGAATTCGTCGACTGGATCCGGTACCGAGGAGATCTGCC
GCC**CGATCGCC**

ATGGAGGCCAGGAGCCGACGCGCTGAGGAGCTGAGACGGGCGGAGTTGGTGGAGATTATCGTGGAGACCG
AGGCACAGACCGGGTCAAGCGCTTCAACGTAGCAGGCGCGGCAAGAAGGAATCTTTGTCGTGAGCT
GCGAGAGGACTACCGGCAGCTAAGAGCCTCAGCTTGAAGAAGGGACCAGCTGCTGAGTGCCCGTGTG
TTCTTTGAGAATTCAAATATGAGGATGCACTTCGCTGCTGCAATGCGCAGAGCCCTACAAGTCTCCT
TCTGCTGAAGCGCACTGTGCCACCGGGATCTGGCACTGAGGCCCGGACGGTGTCTGGATACGAGAT
GAAGGGCCACCGGCCAAAGTGGCCAAGCTGAACATCCAGAGTCTGGCCCTGTGAAGAAGAAGAAGATG
GTGACTGGGGCCCTGGGGACCCCTGCAGATTTGGCCCTGTTGACGTGCGATTCTCTTTCCCAAGTTCT
CCCGACTGCGTCGGGGTCTCAAAGCCGAGGCTGTCAAGGGACCTGTCCAGCTGCCCCAGCCCGTCGCCG
CCTCCAGCTGCCTCGGCTGCGTGTCCGAGAAGTAGCTGAAGAGGCCAGGTAGCCCGAATGGCTGCTGCT
GCTCCTCCCCAAGGAAGGCCAAGGCAGAAGCTGAGGCAGCCACAGGAGCTGGGTTACAGCCCTCAGT
TAGAGCTAGTTGGGCTCGGCTGCCTAGTGCCGAGGTGGTGTCCCTCAGGTCTCAGTCCCAAGGGGAC
CCCATCAACAGAGGCAGCCAGCGGCTTTGCCCTCACCTGCCAACCCCTGGGCTAGGTGCCCCAGCTGCA
CCGCTGTGGAGCCCCAGCCACGGGAATCCAGTTCCACAAGTGAAGTCCCAACCCCTGCCCTCTCTAC
CCTCTTCCCACACTTCCATGCCTGGACACCCAGGAAGGAGCTGCAAGTGGTAAAAGTCCCTACCTGGA
TGTGGCAGCTCCGTCTATGGGGGTGGACCTGGCTTTGCCGGGTGACAGAGTGGAGGCCAGGAGAGGTT
CCTGAAGTGGCCCTCAAGATGCCCGGCTCAGTTTCCCCGTTTTGGGATTGGGGGAAGGAAGCCACTG
AAGCCAAAGTAGTCAAGGGCAGCCCTGAGGCCAAAGCAAGGGTCCAGACTTCGAATGCCACCTTTGG
GCTTTCTCTCCTGGAACCCCGCCCTCTGGCCCTGAAGCTGTTGCTGAGAGCAAGCTGAAGCTACCCACC
CTCAAGATGCCCTCTTTGGCATTGGTGTGACTGGGCTGAGGTCAAGGCACCCAAAGGGCCCGAAGTAA
AGCTCCCTAAGGTTCTGAGGTCAAACCTCCGAAAGTGCCCGAGGCAGCCATTCCAGATGTGCAACTCCC
TGAGGTACAGCTGCCCAAATGTCAGACATGAACTTCCAAAGATCCCTGAGATGTTGTACCCGACGTT



[View online >](#)

CGTCTCCGGAAGTGCAGCTGCCAAAGTCCCTGAGATGAAAGTCCCAGAGATGAAGCTCCCGAAGGTGC
 CCGAGATGGCCGTGCCGATGTACACCTTCCAGATGTACAGCTCCCGAAAGTCCCAGAGATGAAGCTCCC
 GAAGGTGCCCGAGATGGCCGTGCCGATGTACACCTTCCAGATGTACAGCTCCCGAAAGTCCCAGAGATG
 AAGCTACCAGAGATGAAGCTCCCGAAGGTGCCGGAGATGGCCGTGCCGGATGTACGACTCCCGAAGTTC
 AGCTGCCAAAGTGTCTGAGGTGAAGCTCCAAAGATGCCTGAGATGGCCGTGCCTGATGTCCACCTCCC
 GGAGCTACAACCTCCCAAAATGTCCGAGGTGAAGCTCCAAAGATGCCCGAGATGGCCGTGCCCGATGTT
 CGCTCCCGGAAGTTCAGCTGCCAAAGTGTGAGAGATGAAACTCCCTAAGATGCCAGAGATGACCATGC
 CCGACATTCGCCTCCAGAAAGTTCAGTTGCCAAAGTGCCTGACATTAACCTTCCGAAATGAAGCTTCC
 AGAAATAAACTCCCAAGTGCCTGACATGGCAGTGCCTGATGTCCCTTCCAGAGCTGCAGCTGCC
 AAAGTGTGCGACATTCGGCTGCCTGAAATGCAAGTGTACAGGTCCCAGAGGTGCAGCTTCCCAAGATGC
 CAGAGATGAAGTTGTCAAGGTTCTGAGGTACAGAGGAAATCTGCAGGGCGGAGCAGGCAAAAGGGAC
 TGAATTTAGTTTCAAGTTGCCAAGATGACCATGCCAAGTTGGGAAAGTGGCAAGCTGGGGAGGCA
 AGTATTGAGGTTCCAGACAACTCATGACACTTCCCTGTCTGCAGCCAGAGGTGGGCACTGAGGCATCCC
 ATGTTGGTGTCCCTTCCCTCTCTCTCCCTCTGTGGAGCTTGACTTGCCTGGGGCCCTGGCCTGGAGGG
 ACAAGTCCAAGAAGCTGTCCAGGCAAAGTGGAGAAGCCAGAGGGCCCCAGGGTAGCAGTGGGTGTTGGA
 GAGGTGGGCTTTCGTGTGCCCTCTGTGGAGATTGCACTCCTCAGCTGCCACAGTTGAAGTTGAGAAAG
 AGCAGCTAGAGATGGTGGAGATGAAAGTCAAACCTCTTCCAAGTTCTCTCTGCCAAATTCGGACTTTC
 AGGGCCCCAAAGCTGTCAAGGGAGAGGTGGAGGGCCCTGGGCGAGCCACCAAGCTGAAGGTTTCCAAGTTT
 ACCATCTCACTTCCCAAAGCTCGAGCAGGGACTGAGGCCGAAGCGAAGGGAGCTGGGGAAGCCGGTTGC
 TGCCAGCGCTGGATCTGTCCATCCCACAGCTCAGCCTGGATGCCAGCTGCCCTCAGGCAAGGTGGAAGT
 AGCTGATAGCAAGCCTAAATCGTCCAGATTTGCTCTGCCAAGTTTGGGTGAAAGGCCGGGACTCTGAG
 GCTGATGACTGGTGGCAGGGGAGGCTGAGCTTGAGGAAAGGTTGGGGCTGGGATGGGAAGGTGAAGA
 TGCCCAAGCTGAAAATGCCATCTTTTGGTTGTCCCGAGGAAAGGAAGCAGAAACTCAGGATGGACGTGT
 CAGCCCCGGGAAAAGCTGGAGGCCATAGCTGGGCAGCTTAAGATCCCTGCGGTGGAATTGGTCAACCCG
 GGAGCTCAGGAGACAGAGAAGGTCACCAGTGGAGTGAAGCCGTCAGGCCCTCAGGTGTCCACCCTGGGC
 AGGTGGTTGCAGAGGGCCAGGAGAGTGTGCAGAGGGTGTCCACACTAGGTATCTTTGCCCCAGGTGGA
 ATTGGCCAGCTTTGGGGAGGCAGGCCCTGAGATCGTAGCCCTTCTGCAGAGGGCACAGCAGGCTTAGG
 GTCCAGGTGCCACAGGTGATGCTGGAGCTACCTGGAACCCAGGTGGCAGGGGGTATCTGTTAGTGGGTG
 AGGGCATCTTCAAGATGCCACAGTGCAGTGCCTCAGCTAGAGCTGGATGTGGGCTGGGCCATGAAGC
 CCAGGCTGGTGAAGCAGCAAGAGTGAAGGTGGGATAAAGTTGAAGTTGCCACACTGGGACCGGAAGC
 AGAGGAGAGGGGCTTGAAGCCAGGGCCCCGAGGCCAGCGCACCTTCCACTCTCATTGCCGATGTGG
 AACTCACGTACCAGTGAAGTACCGACGCTGAGTACCAGGTAGTTGAGGGTGTGGGATGGTGGGACAA
 ACTCAAGGTTTCGGCTGCCCTGTTTGGTCTGGCAAAGGCCAAGGAAGGGATAGAAGTTGGAGAAAAGGCT
 AAGAGTCCAAAGCTCAGGCTACCCGAGTGGGCTTCCAGCCAGAGTGAAGTCCGGTCTCCGGAGAAGGCTCTC
 CAAGTCTGAGGAGGAGGAAGAGGCAAGTGGGGAAGGGCTTCCAGTCCCGGGGTAGGGTAAGGGTCCG
 CCTGCCTCGGGTAGGCTTGGCTTCCCTTCTAAAGTCTCTAAGGGACAGGAGGGTGTGCAACCTCCAAG
 TCCCCAGTTGGGAGAAGTACCCAAATCCGTTTCTAGGGTGTCTTAAGCCCCAAGGCCGGAGTG
 GGAGTAGGGACCGGAAGAAGGTGGATTGAGGGTCCGACTGCCAGTGTGGGATTTTCAAAACAGCAGT
 TCCAGTTCCACCAGGATTGAGGGAACCCAGGCTGCTGCCATC

ACGCGTACGCGGCCGCTCGAG - GFP Tag - GTTTAA

Protein Sequence: >MG227574 representing NM_198048
 Red=Cloning site Green=Tags(s)

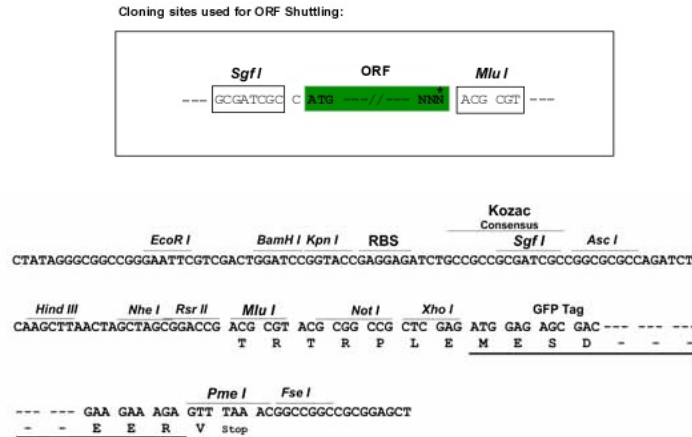
MEARSRSAEELRRAELVEIIVETE AQTGVSGFNVAGGGKEGIFVRELREDS PAAKSLSLQEGDQLLSARV
 FFENFKYEDALRLLQCAEPYKVSFCLKRTVPTGDLALRPGTVSGYEMKGPRAKVAKLNIQSLAPVKKKKM
 VTGALGTPADLAPVDVEFSFPKFSRLRRLKAEAVKGPVPAAPARRRLQLPRLRVREVAEEAQVARMAAA
 APPPRKAKAEAEATGAGFTAPQLELVGPRLPSAEVGVQVSVPKGTPSTEAAASGFALHLPGLGAPAA
 PAVEPPATGIQVPQVELPTLPSLPTLPTLPCLDTQEGA AVVKVPTLDVAAPSMGVDLALPGA EVEAQGEV
 PEVALKMPRLSFRPFGIRGKEATEAKVVKGSPEAKAKGPRLRMPTFGLS LLEPRPSGPEAVAESK LKLPT
 LKMPSTFGI GVTGPEVKAPKGPEVKLPKVPEVKLPK VPEAAIPDVQLPEVQLPKMSDMKLPKIPEMVVPDV
 RLEPVQLPKVPEMKVPEMKLPKVP EMAVPDVHLPDVQLPKVPEMKLPKVP EMAVPDVHLPDVQLPKVPEM
 KLPKEMKLPKVP EMAVPDVRLPEVQLPKVSEVKLPKMP EMAVPDVHLPQLPKMSEVKLPKMP EMAVPDV
 RLEPVQLPKVSEMKLPKMP EMTMPDIRLPEVQLPKVPDIKLPKEMKLP EIKLPKVPD MAVPDVPLPELQLP
 KVSDIRLPEMQVSQVPEVQLPKMP EMKLSKVPEVQRKSAGAEQAKGTEFSFKLPKMTMPKLGKVGKPGA
 SIEVPDKLMTLPCLQPEVGT EASHVGVPSLSLPSVELDLPALGLEGQVQEAVPGKVEKPEGPRVAVGVG
 EVGFRVPSVEIVTPQLPTVEVEKEQLEMVEMKVPSSKFSLPKFGLSGPKAVKGEVEGPGRATKLVSKF
 TISLPKARAGTEAEAKGAGEAGLLPALDLSIPQLSLDAQLPSGKVEVADSKPKSSRFALPKFGVKGRDSE
 ADVLVAGEAELEGKGGWGDGKVKMPKLPKMP SFGLSRGKEAETQDGRVSPGKLEAIAGQLKIPAVELVTP
 GAQETEKVTSGVKPSGLQVSTTGQVVAEQESVQRVSTLGISLPQVELASFG EAGPEIVAPSAEAGTASR
 VQVPQVMLELPGTQVAGD LLVGEGIFKMPTVTVPQLELDVGLGHEAQAGEAAKSEGGIKLKLPTLGTGS
 RGEGVEPQGP EARTFHLSLPDVELTSPVSSHAEYQVVEGDG DGGHKLKVRPLPFLGAKAKEGIEVGEKA
 KSPKLR LPRVGF SQSES VSGEGSPSEEEEEEGSGEGASSRRGRVRVRLPRVGLASPKSVSKGQEGDATSK
 SPVGEKSPKFRFRVSLSPKARSGSRDREEGFRVRLPSVGFSETAVPGSTRIEGTQAAA I

TRTRPLE - GFP Tag - V

Chromatograms: https://cdn.origene.com/chromatograms/ja2589_e04.zip

Restriction Sites: SgfI-MluI

Cloning Scheme:



ACCN: NM_198048

ORF Size: 4173 bp

OTI Disclaimer: Due to the inherent nature of this plasmid, standard methods to replicate additional amounts of DNA in E. coli are highly likely to result in mutations and/or rearrangements. Therefore, OriGene does not guarantee the capability to replicate this plasmid DNA. Additional amounts of DNA can be purchased from OriGene with batch-specific, full-sequence verification at a reduced cost. Please contact our customer care team at custsupport@origene.com or by calling 301.340.3188 option 3 for pricing and delivery.

The molecular sequence of this clone aligns with the gene accession number as a point of reference only. However, individual transcript sequences of the same gene can differ through naturally occurring variations (e.g. polymorphisms), each with its own valid existence. This clone is substantially in agreement with the reference, but a complete review of all prevailing variants is recommended prior to use. [More info](#)

OTI Annotation: This clone was engineered to express the complete ORF with an expression tag. Expression varies depending on the nature of the gene.

Components: The ORF clone is ion-exchange column purified and shipped in a 2D barcoded Matrix tube containing 10ug of transfection-ready, dried plasmid DNA (reconstitute with 100 ul of water).

Reconstitution Method:

1. Centrifuge at 5,000xg for 5min.
2. Carefully open the tube and add 100ul of sterile water to dissolve the DNA.
3. Close the tube and incubate for 10 minutes at room temperature.
4. Briefly vortex the tube and then do a quick spin (less than 5000xg) to concentrate the liquid at the bottom.
5. Store the suspended plasmid at -20°C. The DNA is stable for at least one year from date of shipping when stored at -20°C.

RefSeq: [NM_198048.2](#), [NP_932165.2](#)

RefSeq Size: 4668 bp

RefSeq ORF: 4176 bp

Locus ID: 19153

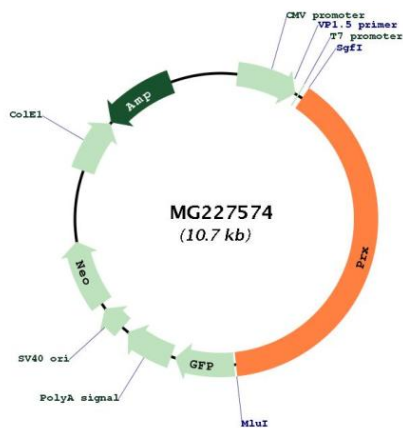
UniProt ID: [O55103](#)

Cytogenetics: 7 15.91 cM

Gene Summary:

Scaffolding protein that functions as part of a dystroglycan complex in Schwann cells, and as part of EZR and AHNAK-containing complexes in eye lens fiber cells (PubMed:11430802, PubMed:21745462, PubMed:22764250). Required for the maintenance of the peripheral myelin sheath that is essential for normal transmission of nerve impulses and normal perception of sensory stimuli (PubMed:10839370). Required for normal transport of MBP mRNA from the perinuclear to the paranodal regions (PubMed:15356632). Required for normal remyelination after nerve injury (PubMed:10839370). Required for normal elongation of Schwann cells and normal length of the internodes between the nodes of Ranvier. The demyelinated nodes of Ranvier permit saltatory transmission of nerve impulses; shorter internodes cause slower transmission of nerve impulses (PubMed:15356632, PubMed:23022068). Required for the formation of appositions between the abaxonal surface of the myelin sheath and the Schwann cell plasma membrane; the Schwann cell cytoplasm is restricted to regions between these appositions (PubMed:15356632, PubMed:23022068). Required for the formation of Cajal bands and of Schmidt-Lanterman incisures that correspond to short, cytoplasm-filled regions on myelinated nerves (PubMed:23022068, PubMed:22764250). Recruits DRP2 to the Schwann cell plasma membrane (PubMed:11430802, PubMed:23022068, PubMed:22764250). Required for normal protein composition of the eye lens fiber cell plasma membrane and normal eye lens fiber cell morphology (PubMed:21745462).[UniProtKB/Swiss-Prot Function]

Product images:



Circular map for MG227574