

## Product datasheet for **MG227526**

### **Nr1h3 (NM\_001177730) Mouse Tagged ORF Clone**

#### **Product data:**

Product Type:	Expression Plasmids
Product Name:	Nr1h3 (NM_001177730) Mouse Tagged ORF Clone
Tag:	TurboGFP
Symbol:	Nr1h3
Synonyms:	AU018371; LXR; RLD1; Unr1
Mammalian Cell Selection:	Neomycin
Vector:	pCMV6-AC-GFP (PS100010)
E. coli Selection:	Ampicillin (100 ug/mL)



[View online »](#)

**ORF Nucleotide Sequence:**

>MG227526 representing NM\_001177730  
 Red=Cloning site Blue=ORF Green=Tags(s)

TTTTGTAATACGACTCACTATAGGGCGGCCGGGAATTCGTCGACTGGATCCGGTACCGAGGAGATCTGCC  
 GCC**CGCATCGCC**

ATGTCCTTGTGGCTGGAGCCTCAATGCCTGATGTTTCTCCTGATTCTGCAACGGAGTTGTGGAAGACAG  
 AACCTCAAGATGCAGGAGACCAGGGAGGCAACTTGCATCCTCAGGGAGGAAGCCAGGATGCCCCAGTC  
 AACTGGGGTTGCTTTAGGGATAGGGTTGGAGTCAGCAGAGCCTACAGCCCTGCTCCCCAGGGCAGAGACC  
 CTCCCAGAGCCGACAGAGCTTCGTCCACAAAAGCGGAAAAAGGGCCAGCCCCAAAATGCTGGGGAACG  
 AGCTGTGCAGTGTCTGTGGGGACAAAGCCTCTGGCTTCCATTACAACGTGCTGAGCTGCGAGGGTGCAA  
 GGGATTCTCCGCCGAGTGTCAATCAAGGGAGCACGCTATGTCTGCCACAGCGTGGCCACTGCCCCATG  
 GACACCTACATGCGGGGAAATGCCAGGAGTGTGACTTCGAAATGCCGCCAGGCAGGCATGAGGGAGG  
 AGTGTGTGCTGTCAGAAGAACAGATCCGCTTGAAGAACTGAAGCGGCAAGAAGAGGAACAGGCTCAAGC  
 CACTTCGGTGTCCCAAGGGTGTCTCACCTCCTCAAGTCTGCCACAGCTCAGCCAGAGCAGCTGGGC  
 ATGATCGAGAAGCTGGTGGCTGCCAGCAACAGTGAACAGGCGCTCCTTCTCAGACCGCTGCGGGTCA  
 CGCCTTGCCCATTCACCCGACCCTCAGAGCCGGGAAGCCGACAACAGCGCTTTGCCACTTTACTGA  
 GCTGGCCATCGTGTCCGTGCAGGAGATTGTTGACTTTGCCAAACAGCTCCCTGGCTTCTACAGCTCAGC  
 AGGGAGGACCAGATCGCCTTGTGAAGACCTCTGCAATCGAGGTCATGCTTCTGGAGACGTCACGGAGGT  
 ACAACCCCGGCAGTGAGAGCATCACCTTCTCAAGGACTTCAGTTACAACCGGGAAGACTTTGCCAAAGC  
 AGGGCTGCAGGTGGAGTTCATCAACCCATCTTTGAGTTCTCCAGAGCCATGAATGAGCTGCAACTCAAT  
 GATGCTGAGTTTGTCTGCTCATTGCCATCAGCATCTTCTGTCAGACCGGCCAACGTCAGGACCAGC  
 TCCAAGTAGAGAGGCTGCAACACACATATGTGGAGGCCCTGCACGCCTACGTCTCCATCAACACCCCA  
 CGACCCACTGATGTTCCACGGATGCTAATGAAGCTGGTGGAGCCTCCGTACTTTGAGCAGCGTCCATTCA  
 GAGCAAGTGTGGCCCTGCGCTGCAGGACAAAAGCTTCCCCTCTGCTGTCTGAGATCTGGGATGTCC  
 ACGAG

**ACGCGT**ACGCGGCCGCTCGAG - GFP Tag - GTTTAA

**Protein Sequence:**

>MG227526 representing NM\_001177730  
 Red=Cloning site Green=Tags(s)

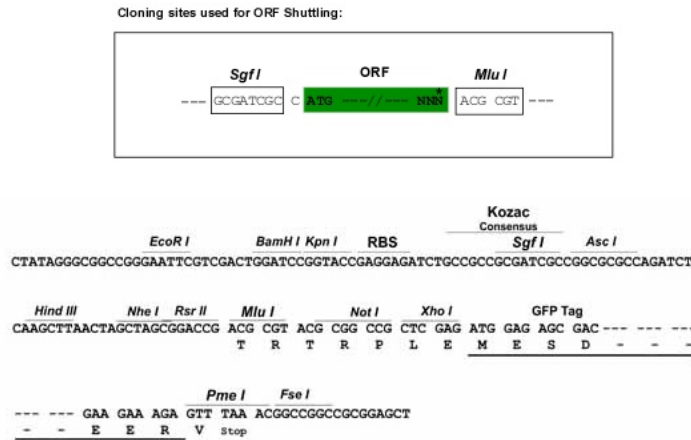
MSLWLEASMPDVSPDSATELWKTEPQDAGDQGGNTCILREEARMPQSTGVALGIGLESAEPTALLPRAET  
 LPEPELTPQKRKKGPAKMLGNELCSVCGDKASGFHYNVLSCEGCKGFFRRSVIKGARYVCHSGGHCPM  
 DTYMRRKQCECLRKCRQAGMREECVLSEEQIRLKKLRQEEEAQATSVSPRVSSPPQVLPQLSPEQLG  
 MIEKLVAAQQQCNRRSFSDRLRVTPWPIAPDPQSREARQQRFAHFTELAIVSVQEIIVDFAKQLPGFLQLS  
 REDQIALLLKTSATIEVMMLLETSSRYNPGSEITFLKDFSYNREDFAKAGLQVEFINPIFEFSRAMNELQLN  
 DAEFALLIAISIFSADRPNVQDQLQVERLQHTYVEALHAYVSIINHPHDPLMFPRMLMKLVSLRTLSSVHS  
 EQVFALRLQDKKLPLLSEIWDVHE

**TRTRPLE** - GFP Tag - V

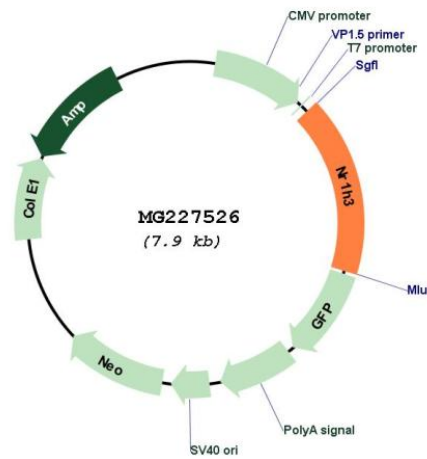
**Restriction Sites:**

SgfI-MluI

Cloning Scheme:



Plasmid Map:



ACCN: NM\_001177730

ORF Size: 1335 bp

OTI Disclaimer: The molecular sequence of this clone aligns with the gene accession number as a point of reference only. However, individual transcript sequences of the same gene can differ through naturally occurring variations (e.g. polymorphisms), each with its own valid existence. This clone is substantially in agreement with the reference, but a complete review of all prevailing variants is recommended prior to use. [More info](#)

OTI Annotation: This clone was engineered to express the complete ORF with an expression tag. Expression varies depending on the nature of the gene.

<b>Components:</b>	The ORF clone is ion-exchange column purified and shipped in a 2D barcoded Matrix tube containing 10ug of transfection-ready, dried plasmid DNA (reconstitute with 100 ul of water).
<b>Reconstitution Method:</b>	<ol style="list-style-type: none"><li>1. Centrifuge at 5,000xg for 5min.</li><li>2. Carefully open the tube and add 100ul of sterile water to dissolve the DNA.</li><li>3. Close the tube and incubate for 10 minutes at room temperature.</li><li>4. Briefly vortex the tube and then do a quick spin (less than 5000xg) to concentrate the liquid at the bottom.</li><li>5. Store the suspended plasmid at -20°C. The DNA is stable for at least one year from date of shipping when stored at -20°C.</li></ol>
<b>RefSeq:</b>	<u>NM_001177730.1</u> , <u>NP_001171201.1</u>
<b>RefSeq Size:</b>	1802 bp
<b>RefSeq ORF:</b>	1338 bp
<b>Locus ID:</b>	22259
<b>UniProt ID:</b>	<u>Q9Z0Y9</u>
<b>Cytogenetics:</b>	2 50.52 cM
<b>Gene Summary:</b>	Nuclear receptor that exhibits a ligand-dependent transcriptional activation activity (PubMed:18055760, PubMed:19520913, PubMed:20427281). Interaction with retinoic acid receptor (RXR) shifts RXR from its role as a silent DNA-binding partner to an active ligand-binding subunit in mediating retinoid responses through target genes defined by LXRES. LXRES are DR4-type response elements characterized by direct repeats of two similar hexanuclotide half-sites spaced by four nucleotides. Plays an important role in the regulation of cholesterol homeostasis, regulating cholesterol uptake through MYLIP-dependent ubiquitination of LDLR, VLDLR and LRP8. Interplays functionally with RORA for the regulation of genes involved in liver metabolism.[UniProtKB/Swiss-Prot Function]