

Product datasheet for **MG227515**

Eln (NM_007925) Mouse Tagged ORF Clone

Product data:

Product Type:	Expression Plasmids
Product Name:	Eln (NM_007925) Mouse Tagged ORF Clone
Tag:	TurboGFP
Symbol:	Eln
Synonyms:	AI385707; AI480567; E030024M20Rik
Mammalian Cell Selection:	Neomycin
Vector:	pCMV6-AC-GFP (PS100010)
E. coli Selection:	Ampicillin (100 ug/mL)



[View online »](#)

ORF Nucleotide Sequence:

>MG227515 representing NM_007925
 Red=Cloning site Blue=ORF Green=Tags(s)

TTTTGTAATACGACTCACTATAGGGCGGCCGGAATTCGTCGACTGGATCCGGTACCGAGGAGATCTGCC
 GCC**CGCATCGCC**

ATGGCGGGTCTGACACGGTAGTCCCGCAGCCTGGCGTCTTGCTGATCCTTTGCTCAACCTCCTCCATC
 CCGCGCAGCCTGGAGGGTTCCAGGAGCTGTGCCTGGCGGACTTCTGGTGGAGTCCCGGTGGAGTCTA
 TTATCCAGGGGCTGGTATTGGAGCCTGGGAGGAGGAGGAGCTCTGGGACCTGGAGGAAAACCACT
 AAGCCAGGTGCCGACTTCTGGGAACGTTTGGAGCAGGTCTGGAGGACTTGGAGGTGCTGGCCCGGTG
 CAGGTCTCGGGCCTTCTGCAGGCACCTCCAGGGGAGGAGCTCTGGTGCCCGGGGAGCAGCAGG
 GGCTGCTCGGCTTATAAAGCTGCCGCAAAGCTGGGGCTGGGCTTGGTGGCGTTGGCGGAGTCCCAGGT
 GGTGTTGGCGTTGGTGGAGTCCAGGTGGTGGTGGAGTTGGCGGAGTCCCAGGTGGTGGTGGAGTTGGT
 GAGTCCCTGGCGGTGGTGGTATTGGTGGCATCGGTGGCTTAGGAGTCTCGACAGGTGCTGTGGTGCC
 CCAAGTCGGAGCTGGCATCGGAGCTGGAGGAAAGCCTGGGAAAGTTCCTGGTGGTCTCCAGGTGTA
 TACCCAGGCGGAGTGGTCCCAGGAACAGGAGCTCGGTTCCCTGGTGGGGGTGCTCCCTGGAGTCCCA
 CTGGCACAGGAGTCAAAGCCAAGGCTCCAGGTGGAGGTGGTGGTCTTTGCTGGAATCCCAGGGGTCGGACC
 CTTTGGGGGTGAGCAGCCTGGTGTCCCCTGGGTATCCCATCAAAGCACCAGGCTGCCAGGTGGCTAC
 GGACTGCCCTATACCAATGGGAAATTGCCCTATGGAGTAGCTGGTGCAGGGGCAAGGCTGGCTACCCAA
 CAGGGACAGGGGTCGGATCCCAGGCGGGCGGCAGCAGCTAAAGCAGCCAAGTATGGTGGTGGGGGAGC
 TGGAGTCTCCCTGGTGGTGGAGGGGTGGCATTCTGGTGGTGGTGGCGCAATTCTGGAATTGGAGGC
 ATTGCAGGCGCTGGAACCTCTGCAGCAGCAGCTGCTCAAAGGCTGCTGCTAAGGCTGCTAAGTATGGAG
 CTGCTGGAGGTTAGTGCCTGGTGGACAGGAGTTAGGCTCCCAGGTGGTGGATCCCAGGTGGTGGTGG
 CATTCTGGTGGTGGTGGCATCCCAGGTGGTGGGGGCCCTGGTATTGGAGGTCCAGGCATTGGTGGTGG
 CCAGGAGCTGTGTACCAGCTGCAGCTGCTAAAGCTGCTGCCAAAGCTGCCAAATACGGAGCCAGAGGTG
 GAGTTGGCATCCCGACATATGGGGTTGGTGGTGGTGGTCTTCTGGCTATGGTGGTGGAGCTGGAGCAGG
 ACTTGGAGGTGCAAGCCAGCTGCTGCTGCTGCCCGCCCAAAGCTGCTAAGTATGGTGGTGGAGGAGCT
 GGAGCCCTGGGAGGCTGGTGGCAGGTGCAGTACCAGGTGCACTGCCAGGTGCAGTACCAGCTGTGCCGG
 GAGCTGGTGGAGTGGCAGGAGCAGTACCCTGCAGCTGCAGCTGCTGCCCGCCGCTAAAGCAGCCGC
 CAAAGCAGGTTGGGTCTGGTGGTGGTGGGTTCTGGTGGAGTTGGTGGTGGTGGGATTCCCGGTGGA
 GTTGGTGGTGGTGGGTTCTGGTGGAGTTGGCCCTGGTGGTGGTACTGGTATTGGAGCTGGTCTGGCG
 GTCTTGGAGGAGCAGGGTCAACGGCTGCCGCTAAATCTGCTGCTAAGGCAGCTGCCAAAGCCAGTACAG
 AGCTGCCGCTGGGCTGGAGCTGGTGGTGGTGGTGGGCTGGTGGTGGTGGTGGTGGTGGTGGTGGTGGT
 GGTGGTGGTGGTGGGATTGGGGCTGGTGGTGGTGGTGGTGGTGGTGGTGGTGGTGGTGGTGGTGGTGG
 GATTTGGAGCTGGAGCAGTACCTGGATCGCTGGCTGCATCCAAAGCTGCTAAATATGGAGCAGCAGGTGG
 CCTTGGTGGCCCTGGAGGTCTCGGTGGCCCTGGAGGTCTCGGTGGACCTGGAGGACTTGGTGGGGCTGGT
 GTTCCCGGTAGAGTAGCAGGAGCTGCACCCCTGCTGCTGCCGCTGCTGCTGCCAAAGCTGCTGCTAAGG
 CTGCCAGTATGGCCTTGGTGGAGCCGGAGGATTGGGAGCCGGTGGACTGGGGCCGGTGGACTGGGAGC
 CGGTGGACTGGGAGCTGGTGGACTGGGAGCCGGTGGACTGGGAGCTGGTGGACTGGGAGCCGGTGGACTG
 GGAGCTGGTGGAGGTGTGCCCTGCTGCAGCTGCTAAGGCAGCCAAATATGGTGGTGGTGGTGGTGGG
 GTGTCCTAGGAGCCAGGCCATTCCAGGTGGAGGAGTTGCAGCAAGACCTGGCTTTGGACTTTCTCCCAT
 TTATCCAGGTGGTGGTGGGGCCTGGGAGTTGGTGGAAAACCCCGAAGCCCTATGGAGGAGCCCTT
 GGAGCCCTGGGATACCAAGGTGGGGGCTGCTTTGGGAAATCCTGTGGCCGGAAGAGAAAG

ACGCGTACGCGGCCGCTCGAG - GFP Tag - GTTTAA

Protein Sequence: >MG227515 representing NM_007925
Red=Cloning site Green=Tags(s)

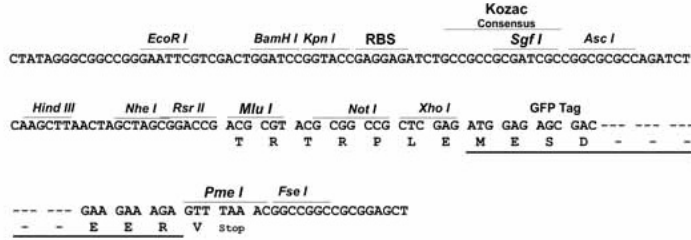
```
MAGLTAVVPQPGVLLILLNLLHPAQPGGVPGAVPGGLPGGVPGGVYYPGAGIGGLGGGGALGPGGKPP
KPGAGLLGTFGAGPGGLGGAGPGAGLGAFPAGTFPGAGALVPGAAGAAAAAYKAAKAGAGLGGVGGVPG
GVGVGGVPGGVGVGGVPGGVGGVGGIGGIGGLGVSTGAVVPQVGAGIGAGGKPGKVPVGLPGV
YGGVLPPTGARFPVGVLPVPTGTGVKAKAPGGGAFAGIPGVGPFGGQPGVPLGYPIKAPKLPGGY
GLPYTNGKLPYGVAGAGGKAGYPTGTGVSQAAAAA KAAKYGAGGAGVLPVGGGGIPGGAGAIPIGIGG
IAGAGTAAAAAAKAAKAAKYGAAGGLVPGGPGVRLPGAGIPGVGGIPGVGGIPGVGGPIGGPIVGG
PGAVSPAAAAKAAKAAKYGARGGVGIPTYGVGAGGFPGYGVGAGAGLGGASPAAAAAA KAAKYGAGGA
GALGGLVPGAVPGALPGAVPAVPGAGGVPGAGTAAAAAA KAAKAGLPGVGGVPGGVGGVGGIPGG
VGVGGVPGGVGPGGVTGIAGPGGLGGAGSAAA KSAKAAKAAQYRAAAGL GAGVPGFAGAGVPGFGA
GAGVPGFAGAGVPGFAGAGVPGFAGAVPGSLAASKAAKYGAAGGLGGPGGLGGPGGLGGAG
VPGRVAGAAPAAAAAA KAAKAAQYGLGGAGGLGAGGLGAGGLGAGGLGAGGLGAGGLGAGGLGAGGL
GAGGGVSPAAAAA KAAKYGAAGLGGVLGARFPGGGVAARPGFGLSPIYGGGAGGLGVGGKPPKPYGGAL
GALGYQGGCFGKSCGRKRK
```

TRTRPLE - GFP Tag - V

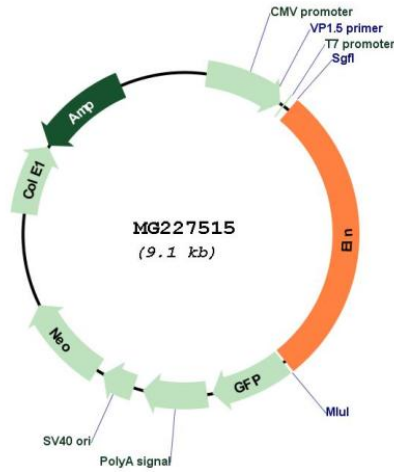
Restriction Sites: Sgfl-Mlul

Cloning Scheme:

Cloning sites used for ORF Shutting:



Plasmid Map:



ACCN:	NM_007925
ORF Size:	2580 bp
OTI Disclaimer:	The molecular sequence of this clone aligns with the gene accession number as a point of reference only. However, individual transcript sequences of the same gene can differ through naturally occurring variations (e.g. polymorphisms), each with its own valid existence. This clone is substantially in agreement with the reference, but a complete review of all prevailing variants is recommended prior to use. More info
OTI Annotation:	This clone was engineered to express the complete ORF with an expression tag. Expression varies depending on the nature of the gene.
Components:	The ORF clone is ion-exchange column purified and shipped in a 2D barcoded Matrix tube containing 10ug of transfection-ready, dried plasmid DNA (reconstitute with 100 ul of water).
Reconstitution Method:	<ol style="list-style-type: none">1. Centrifuge at 5,000xg for 5min.2. Carefully open the tube and add 100ul of sterile water to dissolve the DNA.3. Close the tube and incubate for 10 minutes at room temperature.4. Briefly vortex the tube and then do a quick spin (less than 5000xg) to concentrate the liquid at the bottom.5. Store the suspended plasmid at -20°C. The DNA is stable for at least one year from date of shipping when stored at -20°C.
RefSeq:	NM_007925.3 , NP_031951.2
RefSeq Size:	3781 bp
RefSeq ORF:	2583 bp
Locus ID:	13717
UniProt ID:	P54320
Cytogenetics:	5 74.76 cM
Gene Summary:	This gene encodes elastin, the extracellular matrix protein that forms a major structural component of several tissues including lungs and arterial walls. Cleavage of the signal peptide from the encoded precursor generates soluble tropoelastin which undergoes lysine-derived crosslinking to form elastin polymers. Mice lacking the encoded protein exhibit defective lung development, and die of an obstructive arterial disease resulting from subendothelial cell proliferation and reorganization of smooth muscle. [provided by RefSeq, Aug 2015]