

Product datasheet for **MG227503**

Dab2ip (NM_001001602) Mouse Tagged ORF Clone

Product data:

Product Type: Expression Plasmids
Product Name: Dab2ip (NM_001001602) Mouse Tagged ORF Clone
Tag: TurboGFP
Symbol: Dab2ip
Synonyms: 2310011D08Rik; AI480459; Aip1; mKIAA1743
Mammalian Cell Selection: Neomycin
Vector: pCMV6-AC-GFP (PS100010)
E. coli Selection: Ampicillin (100 ug/mL)
ORF Nucleotide Sequence: >MG227503 representing NM_001001602
 Red=Cloning site Blue=ORF Green=Tags(s)

TTTTGTAATACGACTCACTATAGGGCGGCCGGAATTCGTCGACTGGATCCGGTACCGAGGAGATCTGCC
 GCC**CGATCGCC**

ATGGGCCTCTGTGGCCTTGGACTCCTCGGTGACAACTTGGCAAGATCCTGTGCTGGTCTGGAGGTGCCA
 CTCTCTGGAGGCCAGCCATCCTCGAAGCCTCATCTGGCTGCTGGCCTCAGATGCCAGGTGAGCAGAG
 GAGGCCTACACTCCTATCGTTGCCAAGTCCCATCTGATGCCAAGGCTGAAGGAGTCTCGGTACACGAG
 TCCCTGCTCAGCCCCAGCAGCGCAGTGGAGGCCCTGGACCTCAGCATGGAGGAGGAGGTGATTATCAAGC
 CCGTTCACAGCAGCATCCTGGGTCAGGACTACTGCTTCGAGGTGACAACATCATCAGGAAGCAAGTGT
 TTCTGCGCGTACGCCGCTGAGCGGATAAGTGGATGGAGAACCCTGAGGCGAGCAGTGCACCCCAACAAG
 GACAACAGCCGGCGTGTGGAGCATATCCTGAAGCTGTGGGTGATTGAGGCCAAGGATCTGCCGGCCAAGA
 AGAAGTATCTATGTGAAGTGTGCCTGGACGATGTGCTGTATGCCCGTACCACAAGCAAGCTCAAGACGGA
 CAATGTCTTCTGGGAGAGCACTTTGAGTTCATAACCTGCCGCTCTACGCACAGTCACTGTGCACCTG
 TATCGGGAGACTGACAAGAAAAAGAAAAGGAACGCAACAGCTACCTGGGCTGGTGGAGCCTGCCTGCCG
 CCTCTGTGGTGGCGGCAGTTTGTGGAGAAGTGGTACCCAGTGGTGACACCAACCCCAAGGTTGGCAA
 AGGCCCTGGGCCATGATCCGAATCAAGGCACGCTACCAGACCGTCAAGTCTTGCCTATGGAGATGTAC
 AAGGATTTGCGGAGCACATCACTAACCACTACCTGGGCTGTGGCAGCCCTGGAACCCATCCTCAGTG
 CCAAGACCAAGGAGGAGATGGCGTGGCTCTGGTGCACATCCTGCAGAGCACGGGAAAGGTGAAGGACTT
 TCTAACAGACCTGATGATGTCAGAGGTGGACCGCTGTGGGGACAATGAGCACCTCATCTTCCGGGAGAAC
 AACTGGCCACCAAGGCCATCGAGGAATACCTCAAACCTTGTGGCCAGAAGTACCTGCAGGACGCACTAG
 GTGAGTTCATCAAAGCTCTGTATGAGTCAGATGAAAATTGTGAAGTGGACCAAGCAAGTGTCTATCCGC
 TGACCTCCCTGAGCACCAGGGCAACCTCAAGATGTGCTGTGAGCTGGCCTTCTGCAAGATCATCAACTCC
 TACTGCGTCTCCACGGGAGCTTAAGGAGGTGTTGCGCTCATGGCGGCAGGAGTGTAGCAGCCGAGGCC
 GGCCAGATATCAGTGAACGGCTCATCAGCGCTCCCTCTCCTTCGCTTCTGTGCCCTGCCATCATGTC
 ACCCTCGCTCTCAACCTGCTTCAGGAGTATCCTGACGACCGCACGGCTGCACCCCTCACGCTCATTGCC



[View online >](#)

AAAGTCACCCAGAACCTGGCCAACCTTTGCCAAGTTTGGCAGCAAGGAAGAATACATGTCCTTCATGAACC
 AGTTTCTGGAGCAGAGTGGACCAACATGCAGCGCTTCTCTGTTGGAGATCTCCAACCCCGAGACCTTTT
 CAACACAGCAGGCTTCGAGGGCTACATAGACCTGGGCCGGGAGCTCTAGCCTGCACTCCCTGCTCTGG
 GAAGCTGTCAGCCAGCTTGATCAGAGCGTTGTGTCGAAGCTGGGACCTCTGCCTCGTATCCTGAGGGATG
 TCCACACAGCACTGAGCACTCTGGCAGTGGGCAGCTCCCTGGCACCATGACCTGGCCTCCACCCCGGG
 CTCCGGCAGCAGCAGCTCTGCTGGCTTCAAGAGATGGTATTGAAAATGACCTCTCTGGTCTGATA
 GATTTCCACCCGGTTACCGTCTCCAACCCCGAAAACAAGGACTGTTTTTTTGTACAAGACTCTCCGGGG
 TCCAGCCTTACCTGCCGAGCTCAAGCTACTAGAAGCCAATGAACCTGACCTGCAGATGGCCAATGG
 CAGCAAGAGCCTGTCCATGGTGGACCTCCAGGACGCCCGCACGCTGGATGGGGAGGCAGGTTCCCCAGTG
 GGCCAGACGCCCTACCTGCTGACGGCAGGTGCCTGCGACTCAGCTGCTGGCTGGGTGGCCAGCCAGGG
 CAGCCCCAGTGAGCCTGGCAGGATTGGCCACAGTGCAGCGGGCAGTGCCAACCAACCAACCAGGAC
 CTCCGAGGGTGCACCAGGACGGCCCCAGTTGTTGGCCCCACTTTCCTTCCAGAATCTGTGTACCAGATG
 GCGGCCGCTGCCACTGTACCCCGTGGCCTTGGTACTCAGGCTCTGAAGGCCACAGCTCCCTGAGCT
 CTCACAGCAACAGTGAAGAGCTGGCAGCCGCTGCCAACTAGGAAGTTTCAGCACTGCTGCAGAGGAGCT
 GGCAAGGCGGCTGGAGAAGTGGCAGGAGGCAGATGCTACTGACTGAGAAGGGTGGCAGCCACAGTG
 CCGAGGCAAAATAGTGCCGGTCCCAGCGGAGGATTGACCAGCCGCCACCGCCACCACCACCGCCTC
 CTGCTCCCGGGGAGGACACCTCTACCTGCTGAGCACCTACAGTACCCACGACCTCAAGTGGAAAC
 CCTGGCATCAGCATCCCCGACTGGGCTGGCCCTGGCACCAGGCTGCGGCAACAGTCTCTCTCTCCAAG
 GGAGACAGCCAGAGCTGAAGCCCGAGCCATGCACAAGCAGGGCCCTTACCCGTCAGTCCCAATGCC
 TGGACCGCACGGCCGCTTGGCTCTTGACCATGAACGCGCAGTTGTTAGAAGCAGAGGGTCTGGGCCAGA
 TCCCCCCACAGGGATAGGCTAAGGAGTAAGGAGGAACCTAGCCAAGCAGAAAAGGATCTGGCAGTGCTA
 CAAGACAAGCTACGGATCTCCACCAAGAAGCTGGAGGAGTATGAGACCCTATTCAAGTCCAGGAGGAGA
 CGACGAGAAGCTGGTGGTATCAGGCTCGGCTGGAAGAAGGTGAGGAGCGGCTCGGCGCCAGCA
 GGAAGACAAGGATATCCAGATGAAAGGCATCATCAGCAGGTTGATGTGAGTGAAGAAGAACTGAAGAAG
 GATCATGCAGAGATGCAAGCAGCTGTAGATTCCAAACAGAAGATCATCGATGCCAGGAAAAGCGCATTG
 CCTCGCTGGATGCTGCCAATGCCCGCTCATGAGTGCCCTCACACAGCTGAAAGAGAGGTACAGCATGCA
 AGCCCGTAACGGCGTCTCCCCACCAACCCACCAAAATTCAGATTACTGAGAACGGCGAGTTCAGAAAC
 AGCAGCAATTGT

ACGCGTACGCGGGCCGCTCGAG - GFP Tag - GTTTAA

Protein Sequence:

>MG227503 representing NM_001001602
 Red=Cloning site Green=Tags(s)

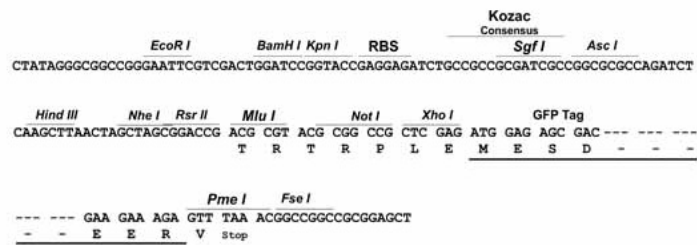
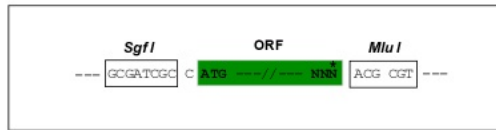
MGLCGLGLLDNLDLWVIEAKDLPAKKKYLCELCLDDVLYARTTSLKTDNVFGEHFEFHNLPPLRTVTVHL
 YRETDKTKKERNKSYLGLVSLPAASVAGRQFVEKWYPVTPNPKGGKGGPMPMIRIKARYQTVSILPMEMY
 KEFAEHI TNHYLGLCAALEPILSAKTKEMASLVHILQSTGKVKDFLTDLMMSEVDRCDNEHLIFREN
 TLATKAIEEYLKLVGQKYLQDALGEF IKALYESDENCEVDPSKCSSADLPEHQGNLKMCCELAFCKIINS
 YCVFRELKEVFASWRQECSSRGRPDISERLISASLFLRFLCPAIMPSPSLFNLLQEYPPDDRTARTLTLIA
 KVTQNLANFAKFGSKEEYMSFMNQFLEHEWTNMQRFLLEISNPETLSNTAGFEGYIDLGRELSSLHLLW
 EAVSQLDQSVVSKLGPLPRILRDVHTALSTPGSGQLPGTNDLASTPGSGSSVSAGLQKMIENDLSGLI
 DFTRLPSPTPENKDLFFVTRSSGVQSPARSSSYSEANEPDLQMANGSKSLSMVDLQDARTLDGEAGSPV
 GPDALPADGQVPATQLLAGWPARAAPVSLAGLATVRRVPTPTTPGTSEGAPGRPQLLAPLSFQNPVYQM
 AAGLPLSPRGLDGSSEGHSSLSHSNSEELAAAALGFSFSTAAEELARRPGELARRQMSLTEKGQPTV
 PRQNSAGPQRRIDQPPPPPPPPAPRGRTPPTLLSTLQYPRPSSGLASAPDWAGPGTRLRQSSSSK
 GDSPELKPRAMHKQGPSVSPNALDRTAAWLLTMNAQLLEDEGLGPDPPHRDRLRSEEL SQAEDLAVL
 QDKLRISTKKLEEYETLFCQEETTQKLVLEYQARLEEGEERLRQEQEDKDIQMKGIISRLMSVEEELKK
 DHAEMQAAVDSKQKIIDAQEKRIASLDAANARLMSALTQLKERYSMQARNGVSPTNPTKLQITENGEFRN
 SSNC

TRTRPLE - GFP Tag - V

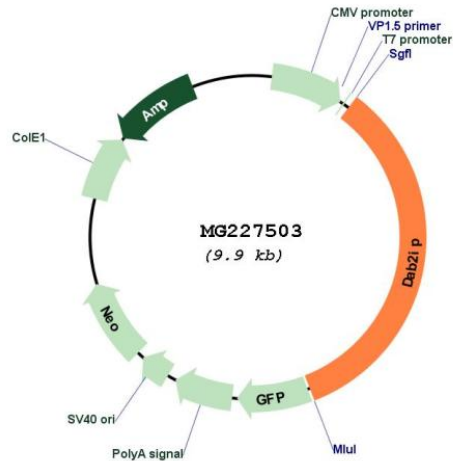
Restriction Sites: SgfI-MluI

Cloning Scheme:

Cloning sites used for ORF Shuttling:



Plasmid Map:



ACCN: NM_001001602

ORF Size: 3372 bp

OTI Disclaimer: The molecular sequence of this clone aligns with the gene accession number as a point of reference only. However, individual transcript sequences of the same gene can differ through naturally occurring variations (e.g. polymorphisms), each with its own valid existence. This clone is substantially in agreement with the reference, but a complete review of all prevailing variants is recommended prior to use. [More info](#)

OTI Annotation: This clone was engineered to express the complete ORF with an expression tag. Expression varies depending on the nature of the gene.

Components: The ORF clone is ion-exchange column purified and shipped in a 2D barcoded Matrix tube containing 10ug of transfection-ready, dried plasmid DNA (reconstitute with 100 ul of water).

Reconstitution Method:

1. Centrifuge at 5,000xg for 5min.
2. Carefully open the tube and add 100ul of sterile water to dissolve the DNA.
3. Close the tube and incubate for 10 minutes at room temperature.
4. Briefly vortex the tube and then do a quick spin (less than 5000xg) to concentrate the liquid at the bottom.
5. Store the suspended plasmid at -20°C. The DNA is stable for at least one year from date of shipping when stored at -20°C.

RefSeq: [NM_001001602.2](#), [NP_001001602.2](#)

RefSeq Size: 6424 bp

RefSeq ORF: 3375 bp

Locus ID: 69601

UniProt ID: [Q3UHC7](#)

Cytogenetics: 2 B

Gene Summary:

Functions as a scaffold protein implicated in the regulation of a large spectrum of both general and specialized signaling pathways. Involved in several processes such as innate immune response, inflammation and cell growth inhibition, apoptosis, cell survival, angiogenesis, cell migration and maturation. Plays also a role in cell cycle checkpoint control; reduces G1 phase cyclin levels resulting in G0/G1 cell cycle arrest. Mediates signal transduction by receptor-mediated inflammatory signals, such as the tumor necrosis factor (TNF), interferon (IFN) or lipopolysaccharide (LPS). Modulates the balance between phosphatidylinositol 3-kinase (PI3K)-AKT-mediated cell survival and apoptosis stimulated kinase (MAP3K5)-JNK signaling pathways; sequesters both AKT1 and MAP3K5 and counterbalances the activity of each kinase by modulating their phosphorylation status in response to proinflammatory stimuli. Acts as a regulator of the endoplasmic reticulum (ER) unfolded protein response (UPR) pathway; specifically involved in transduction of the ER stress-response to the JNK cascade through ERN1. Mediates TNF-alpha-induced apoptosis activation by facilitating dissociation of inhibitor 14-3-3 from MAP3K5; recruits the PP2A phosphatase complex which dephosphorylates MAP3K5 on 'Ser-966', leading to the dissociation of 13-3-3 proteins and activation of the MAP3K5-JNK signaling pathway in endothelial cells. Mediates also TNF/TRAF2-induced MAP3K5-JNK activation, while it inhibits CHUK-NF-kappa-B signaling. Acts a negative regulator in the IFN-gamma-mediated JAK-STAT signaling cascade by inhibiting smooth muscle cell (VSMCs) proliferation and intimal expansion, and thus, prevents graft arteriosclerosis (GA). Acts as a GTPase-activating protein (GAP) for the ADP ribosylation factor 6 (ARF6) and Ras. Promotes hydrolysis of the ARF6-bound GTP and thus, negatively regulates phosphatidylinositol 4,5-bisphosphate (PIP2)-dependent TLR4-TIRAP-MyD88 and NF-kappa-B signaling pathways in endothelial cells in response to lipopolysaccharides (LPS). Binds specifically to phosphatidylinositol 4-phosphate (PtdIns4P) and phosphatidylinositol 3-phosphate (PtdIns3P). In response to vascular endothelial growth factor (VEGFA), acts as a negative regulator of the VEGFR2-PI3K-mediated angiogenic signaling pathway by inhibiting endothelial cell migration and tube formation. In the developing brain, promotes both the transition from the multipolar to the bipolar stage and the radial migration of cortical neurons from the ventricular zone toward the superficial layer of the neocortex in a glial-dependent locomotion process. Probable downstream effector of the Reelin signaling pathway; promotes Purkinje cell (PC) dendrites development and formation of cerebellar synapses. Functions also as a tumor suppressor protein in prostate cancer progression; prevents cell proliferation and epithelial-to-mesenchymal transition (EMT) through activation of the glycogen synthase kinase-3 beta (GSK3B)-induced beta-catenin and inhibition of PI3K-AKT and Ras-MAPK survival downstream signaling cascades, respectively.[UniProtKB/Swiss-Prot Function]