

Product datasheet for **MG227480**

Ctnnb1 (NM_007614) Mouse Tagged ORF Clone

Product data:

Product Type:	Expression Plasmids
Product Name:	Ctnnb1 (NM_007614) Mouse Tagged ORF Clone
Tag:	TurboGFP
Symbol:	Ctnnb1
Synonyms:	Bfc; Cat; Catnb; Mesc
Mammalian Cell Selection:	Neomycin
Vector:	pCMV6-AC-GFP (PS100010)
E. coli Selection:	Ampicillin (100 ug/mL)



[View online »](#)

ORF Nucleotide Sequence:

>MG227480 representing NM_007614
 Red=Cloning site Blue=ORF Green=Tags(s)

TTTTGTAATACGACTCACTATAGGGCGGCCGGAATTCGTCGACTGGATCCGGTACCGAGGAGATCTGCC
 GCC**CGCATCGCC**

ATGGCTACTCAAGCTGACCTGATGGAGTTGGACATGGCCATGGAGCCGGACAGAAAAGCTGCTGTACGCC
 ACTGGCAGCAGCAGTCTTACTTGGATTCTGGAATCCATTCTGGTGCCACCACCACAGCTCCTTCCCTGAG
 TGGCAAGGGCAACCCTGAGGAAGAAGATGTTGACACCTCCCAAGTCCTTTATGAATGGGAGCAAGGCTTT
 TCCAGTCTTACGCAAGAGCAAGTAGCTGATATTGACGGGCAGTATGCAATGACTAGGGCTCAGAGGG
 TCCGAGCTGCCATGTTCCCTGAGACGCTAGATGAGGGCATGCAGATCCCATCCACGCAGTTTGACGCTGC
 TCATCCCCTAATGTCCAGCGCTTGGCTGAACCATCACAGATGTTGAAACATGCAGTTGTCAATTTGATT
 AACTATCAGGATGACGCGGAACCTGCCACACGTGCAATTCCTGAGCTGACAAAACCTGCTAAACGATGAGG
 ACCAGGTGGTAGTTAATAAAGCTGCTGTTATGGTCCATCAGCTTCCAAAAAGGAAGCTTCCAGACATGC
 CATCATGCGCTCCCTCAGATGGTGTCTGCCATTGTACGCACCATGCAGAATACAATGATGTAGAGACA
 GCTCGTTGTAAGTCTGGGACTCTGCACAACCTTCTCACCACCGGAGGGCTTGCTGGCCATCTTTAAGT
 CTGGTGGCATCCCAGCGCTGGTGAATGCTTGGGTACCAAGTGGATTCTGTACTGTTCTACGCCATCAC
 GACTGACATAATCTCCTGCTCCATCAGGAAGGAGCTAAAATGGCAGTGCCTAGCTGGTGGACTGCAG
 AAAATGGTTGCTTGGCTCAACAAAAACAACGTGAAATCTTGGCTATTACAACAGACTGCCTCAGATCT
 TAGCTTATGGCAATCAAGAGAGCAAGCTCATATTCTGGCCAGTGGTGGACCCCAAGCCTTAGTAAACAT
 AATGAGGACCTACACTTATGAGAAGCTTCTGTGGACCACAAGCAGAGTGTGAAGGTGCTGTCTGTCTGC
 TCTAGCAACAAGCCGGCATTGTAGAAGCTGGTGGATGCAGGCACTGGGCTTCATCTGACAGACCCAA
 GTCAGCGACTTGTCAAACCTGCTTTGGACTCTCAGAAACCTTTCAGATGCAGCGACTAAGCAGGAAGG
 GATGGAAGGCCTCCTTGGGACTCTAGTGCAGCTTCTGGGTTCCGATGATATAAATGTGGTCACCTGTGCA
 GCTGGAATTCTCTCTAACCTCACTTGAATAATTACAAAAACAAGATGATGGTGTGCCAAGTGGGTGGCA
 TAGAGGCTCTTGTACGCACCGCTCTTCTGCTGGTACAGGGAAGACATCACTGAGCCTGCCATCTGTGC
 TCTTCGTCATCTGACCAGCCGGCATCAGGAAGCCGAGATGGCCAGAATGCCGTTGCGCTTCATTATGGA
 CTGCTGTTGTGGTTAACTCCTGCACCCACCATCCCCTGCGCTCTGATAAAGGCAACTGTTGGATTGA
 TTCGAAACCTTGGCCTTGGCCAGCAAATCATGCGCTTTCGGGAACAGGGTGTATTCCACGACTAGT
 TCAGCTGCTTGTACGAGCACATCAGGACACCAACGGCGCACCTCCATGGGTGGAACGCAGCAGCAGTTT
 GTGGAGGGCGTGCATGGAGGAGATAGTAGAAGGTGTACTGGAGCTCTCCACATCCTTGTCTGGGACG
 TTCACAACCGGATTGTAATCCGAGGACTCAATACCATTCCATTGTTTGTGCAATTGCTTTATTCTCCCAT
 TGAAAATATCAAAGAGTAGCTGCAGGGTCTCTGTGAACCTGCTCAGGACAAGGAGGCTGCAGAGGCC
 ATTTAAGCTGAGGGAGCCACAGCTCCCCTGACAGAGTACTCCACTCCAGGAATGAAGGCGTGGCAACAT
 ACGCAGCTGCTGTCTATTCCGAATGTCTGAGGACAAGCCACAGGATTACAAGAAGCGGCTTTCAGTCGA
 GCTGACCAGTTCCCTCTCAGGACAGAGCCAATGGCTTGGAAATGAGACTGCAGATCTTGGACTGGACATT
 GGTGCCAGGGGAGAAGCCCTTGGATATCGCCAGGATGATCCAGCTACCGTTCTTTTCACTCTGGTGGAT
 ACGGCCAGGATGCCTTGGGATGGACCTATGATGGAGCATGAGATGGGTGGCCACCACCCTGGTGTGA
 CTATCCAGTTGATGGGCTGCCTGATCTGGGACACGCCAGGACCTCATGGATGGGCTGCCCCAGGTGAT
 AGCAATCAGCTGGCCTGGTTTGAATACTGACCTG

ACGCGTACGCGGCCGCTCGAG - GFP Tag - GTTTAA

Protein Sequence: >MG227480 representing NM_007614
 Red=Cloning site Green=Tags(s)

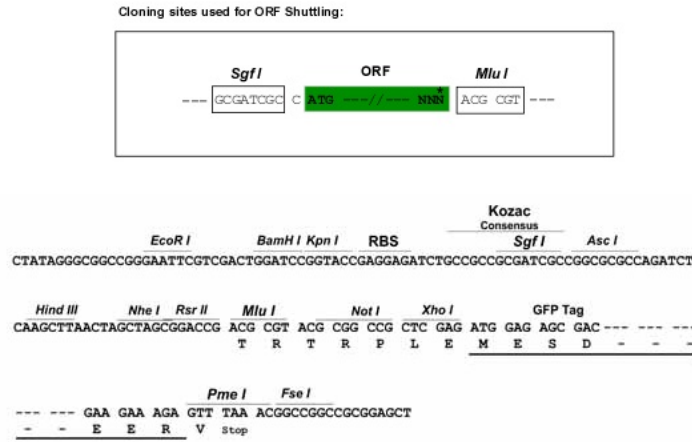
```

MATQADLMELDMAMEPDRKAAVSHWQQSYLDSGIHSGATTTAPSLSGKGNPEEEDVDTSQVLYEWEQGF
SQSFTQEQVADIDGOYAMTRAQRVRAAMFETLDEGMQIPSTQFDDAHPNTNVQRLAEPQMLKHAVVNL
NYQDDAELATRAIPELTKLLNDEDQVVVNKAAMVHQLSKKEASRHAIMRSPQMVSIVRTMQNTNDVET
ARCTAGTLHNLSSHREGLLAIFKSGGIPALVKMLGSPVDSVLFYAITTLHNLHLHQEGAKMAVRLAGGLQ
KMWALLNKTNVKFLAITTDCLQILAYGNQESKLIILASGGPQALVNIMRITYTYEKLLWTTSRVLKVL
SSNKPAIVEAGGMQALGLHLTDPQSRLVQNCLWTLRNLSDAATKQEGMEGLLGTLLVQLLGSDDINVTCA
AGILSNLTCNNYKNMMVCQVGGIEALVRTVLRAGDREDITEPAICALRHLSRHQEAEMAQNAVRLHYG
LPVVVLLHPPSHWPLIKATVGLIRNLALCPANHAPLREQAIPRLVQLLVRAHQDTQRRTSMGGTQQQF
VEGVRMEEIVEGCTGALHILARDVHNRIIRGLNTIPLFVQLLYSPIENIQRVAAGVLCELAQDKEAAEA
IEAEGATAPL TELLHSRNEGVATYAAAVLFRMSDKPQDYKKRLSVELTSSLFRTEPMAWNETADLGLDI
GAQGEALGYRQDDPSYRSFHSGGYGQDALGMDPMMHEMGGHHPGADYPVDGLPDLGHAQDLMDGLPPGD
SNQLAWFDTDL
  
```

TRTRPLE - GFP Tag - V

Restriction Sites: SgfI-MluI

Cloning Scheme:



ACCN: NM_007614

ORF Size: 2343 bp

OTI Disclaimer: Due to the inherent nature of this plasmid, standard methods to replicate additional amounts of DNA in E. coli are highly likely to result in mutations and/or rearrangements. Therefore, OriGene does not guarantee the capability to replicate this plasmid DNA. Additional amounts of DNA can be purchased from OriGene with batch-specific, full-sequence verification at a reduced cost. Please contact our customer care team at custsupport@origene.com or by calling 301.340.3188 option 3 for pricing and delivery.

The molecular sequence of this clone aligns with the gene accession number as a point of reference only. However, individual transcript sequences of the same gene can differ through naturally occurring variations (e.g. polymorphisms), each with its own valid existence. This clone is substantially in agreement with the reference, but a complete review of all prevailing variants is recommended prior to use. [More info](#)

OTI Annotation: This clone was engineered to express the complete ORF with an expression tag. Expression varies depending on the nature of the gene.

Components: The ORF clone is ion-exchange column purified and shipped in a 2D barcoded Matrix tube containing 10ug of transfection-ready, dried plasmid DNA (reconstitute with 100 ul of water).

Reconstitution Method:

1. Centrifuge at 5,000xg for 5min.
2. Carefully open the tube and add 100ul of sterile water to dissolve the DNA.
3. Close the tube and incubate for 10 minutes at room temperature.
4. Briefly vortex the tube and then do a quick spin (less than 5000xg) to concentrate the liquid at the bottom.
5. Store the suspended plasmid at -20°C. The DNA is stable for at least one year from date of shipping when stored at -20°C.

RefSeq: [NM_007614.3](#), [NP_031640.1](#)

RefSeq Size: 3640 bp

RefSeq ORF: 2346 bp

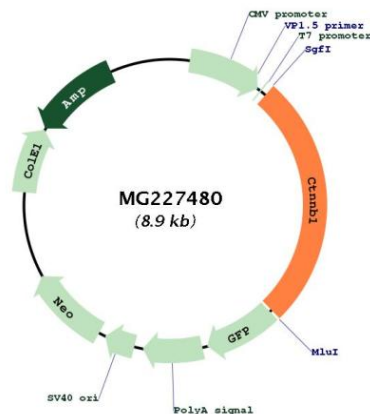
Locus ID: 12387

UniProt ID: [Q02248](#)

Cytogenetics: 9 72.19 cM

Gene Summary:

This gene encodes not only an important cytoplasmic component of the classical cadherin adhesion complex that forms the adherens junction in epithelia and mediates cell-cell adhesion in many other tissues but also a key signaling molecule in the canonical Wnt signaling pathway that controls cell growth and differentiation during both normal development and tumorigenesis. The gene product contains a central armadillo-repeat containing domain through which it binds the cytoplasmic tail of classical cadherins; meanwhile, it also binds alpha-catenin, which further links the cadherin complex to the actin cytoskeleton either directly or indirectly. Beta-catenin is therefore necessary for the adhesive function of classical cadherins. Another key function of this protein is to mediate the canonical Wnt signaling pathway and regulate gene transcription. Without Wnt signal, cytoplasmic beta-catenin that is not associated with the cadherin complex is quickly phosphorylated at the N-terminal Ser/Thr residues by the so called degradation complex containing axin, adenomatous polyposis coli (APC), casein kinase I, and GSK3B, then ubiquitinated by beta-TrCP, and degraded by the proteasome. However, in the presence of Wnt signal, the degradation complex is disrupted and the stabilized cytoplasmic beta-catenin translocates into the nucleus, where it binds various transcription factors and, together with these factors, regulates the transcription of many downstream genes. Mutations of this gene have been linked with various types of tumors. Alternatively spliced variants have been found for this gene. [provided by RefSeq, Sep 2009]

Product images:

Circular map for MG227480