

Product datasheet for **MG227470**

Lims1 (NM_001193303) Mouse Tagged ORF Clone

Product data:

Product Type:	Expression Plasmids
Product Name:	Lims1 (NM_001193303) Mouse Tagged ORF Clone
Tag:	TurboGFP
Symbol:	Lims1
Synonyms:	2310016J22Rik; 4921524A02Rik; AI507642; AU021743; AW551584; C430041B13Rik; Lims1I; PINCH; PINCH1
Mammalian Cell Selection:	Neomycin
Vector:	pCMV6-AC-GFP (PS100010)
E. coli Selection:	Ampicillin (100 ug/mL)
ORF Nucleotide Sequence:	>MG227470 representing NM_001193303 Red=Cloning site Blue=ORF Green=Tags(s)

TTTTGTAATACGACTCACTATAGGGCGGCCGGAATTCGTCGACTGGATCCGGTACCGAGGAGATCTGCC
GCC**CGATCGCC**

ATGGCCTTCCCAGGACGGGCACGCCGTCGACTATCCCAGAGAATGAAGAAATCCCCAAACAGCCCTTA
ACAGCGTCCTTGAAGCTAATGGGAATGAAGACGAGAGGGCTGTGTCAAACCTGCAGCGCAGGCACAGTGA
CGTAAAGGTCTACAAGGAATTCTGTGATTTTTATGCGAAATTCACATGGCCAATGCCTTGCCAGTGCC
ACGTGTGAGCGCTGCAAGGGAGGCTTTGCGCCTGCTGAGAAGATCGTGAACAGTAATGGTGAGCTGTACC
ACGAACAGTGCTTCGTATGTGCTCAGTGCTCCAGCAGTCCCAGAAGGACTCTTTATGAGTTGAAGG
AAGGAAGTACTGTGAGCATGATTTCAAATGCTCTTTGCTCCCTGCTGCCACCAATGTGGTGAATTCATC
ATTGGCAGGGTTATCAAAGCCATGAACAACAGCTGGCATCCTGAGTGCTCCGATGTGACCTCTGCCAGG
AAGTGCTGGCAGACATAGGGTTTGTCAAGAATGCTGGCAGACACCTATGTGCGCCATGTCATAATCGTGA
AAAAGCCAGAGGCCTTGAAAATACATCTGCCAGAAATGCCATGCCATCATTGATGAACAGCCTCTGATC
TTCAAGAACGACCCTTACCATCCAGACCACTTCAACTGTGCCAACTGCGGGAAGGAGCTAACTGCTGATG
CTCGGGAGCTGAAAGGGGAGCTAATACTGTGCCATGCCATGATAAGATGGGGTCCCTATCTGTGGCGC
CTGCAGGAGGCCATTGAAGGGCGAGTAGTGAATGCCATGGGCAAGCAATGGCATGTGGAGCATTGTGTT
TGTGCCAAATGTGAAAACCATTTCTTGGGCATCGCCATTATGAGAGGAAGGGCTTGGCCTACTGTGAAA
CTCACTATAATCAGCTGTTTGGTGATGTTTGTTCATTGCAACCGTGTATAGAAGGTGATGTGGTCTC
TGCTCTCAACAAGGCCTGGTGTGAGCTGCTTGCCTGCTCCACCTGCAATACCAAACTCACAACACTCAAG
GATAAGTTTGTGAAATGATCTAAAGCCAGCTGCAAACTGTTATGAGAAAATGCCAGAAGAGTTTA
AGAGGCGACTTGCCAAACGGGAGAGAGAAGCAAAGGATAAGGACAAGCAGAGAAAAGAGAAAGCCAGTG

ACGCGTACGCGGCCGCTCGAG - GFP Tag - GTTTAA



[View online »](#)

Protein Sequence: >MG227470 representing NM_001193303
 Red=Cloning site Green=Tags(s)

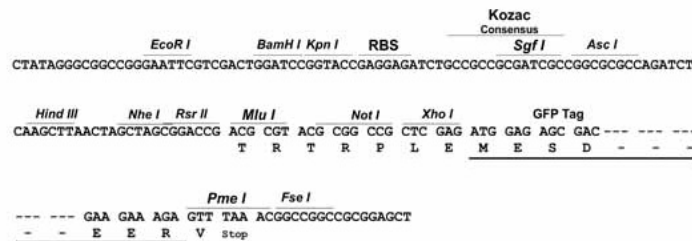
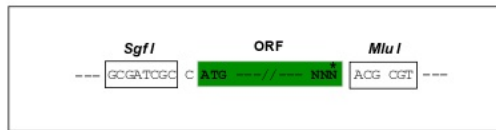
MAFPGRARPCTIPENEEIPQALNSVLEANGNEDERAIVSNLQRRHSDVKVYKEFCDFYAKFNMANALASA
 TCERCKGGFAPAEEKIVNSNGELYHEQCFVCAQCFQOFPEGLFYEFEGRKYCEHDFQMLFAPCCHQCGEFI
 IGRVIKAMNNSWHPECFRCDLCQEV LADIGFVKNAGRHLRCPCHNREKARGLGKYICQKCHAIIDEQPLI
 FKNDPYHPDHFNCANCGKELTADARELKGELYCLPCHDKMGVPICGACRRPIEGRVVNAMGKQWHVEHFV
 CAKCEKPF LGHRHYERKGLAYCETHYNQLFGDVCFHNRVIEGDVV SALNKAWCVSCFACSTCNTKLT
 LTKDKFVEIDLKPVCKYCYEKMPEEFKRRLAKREREAKDKDKQRKRKPV

TRTRPLE - GFP Tag - V

Restriction Sites: SgfI-MluI

Cloning Scheme:

Cloning sites used for ORF Shutting:



ACCN: NM_001193303

ORF Size: 1188 bp

OTI Disclaimer: The molecular sequence of this clone aligns with the gene accession number as a point of reference only. However, individual transcript sequences of the same gene can differ through naturally occurring variations (e.g. polymorphisms), each with its own valid existence. This clone is substantially in agreement with the reference, but a complete review of all prevailing variants is recommended prior to use. [More info](#)

OTI Annotation: This clone was engineered to express the complete ORF with an expression tag. Expression varies depending on the nature of the gene.

Components: The ORF clone is ion-exchange column purified and shipped in a 2D barcoded Matrix tube containing 10ug of transfection-ready, dried plasmid DNA (reconstitute with 100 ul of water).

Reconstitution Method:

1. Centrifuge at 5,000xg for 5min.
2. Carefully open the tube and add 100ul of sterile water to dissolve the DNA.
3. Close the tube and incubate for 10 minutes at room temperature.
4. Briefly vortex the tube and then do a quick spin (less than 5000xg) to concentrate the liquid at the bottom.
5. Store the suspended plasmid at -20°C. The DNA is stable for at least one year from date of shipping when stored at -20°C.

RefSeq: [NM_001193303.1](#), [NP_001180232.1](#)

RefSeq Size: 4473 bp

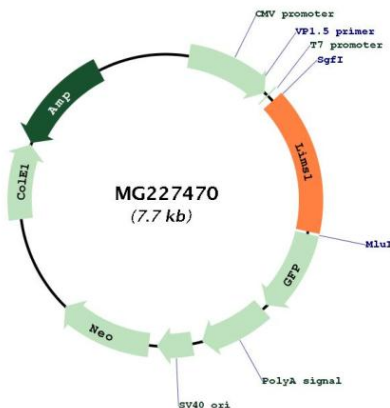
RefSeq ORF: 1191 bp

Locus ID: 110829

Cytogenetics: 10 29.31 cM

Gene Summary: Adapter protein in a cytoplasmic complex linking beta-integrins to the actin cytoskeleton, bridges the complex to cell surface receptor tyrosine kinases and growth factor receptors. Involved in the regulation of cell survival, cell proliferation and cell differentiation. [UniProtKB/Swiss-Prot Function]

Product images:



Circular map for MG227470