

## Product datasheet for **MG227459**

### Smarca4 (NM\_001174078) Mouse Tagged ORF Clone

#### Product data:

Product Type:	Expression Plasmids
Product Name:	Smarca4 (NM_001174078) Mouse Tagged ORF Clone
Tag:	TurboGFP
Symbol:	Smarca4
Synonyms:	b2b508.1Clo; b2b692Clo; Brg1; HP1-BP72; SNF2beta; SW1/SNF
Mammalian Cell Selection:	Neomycin
Vector:	pCMV6-AC-GFP (PS100010)
E. coli Selection:	Ampicillin (100 ug/mL)
ORF Nucleotide Sequence:	>MG227459 representing NM_001174078 Red=Cloning site Blue=ORF Green=Tags(s)

TTTTGTAATACGACTCACTATAGGGCGGCCGGAATTCGTCGACTGGATCCGGTACCGAGGAGATCTGCC  
GCC**CGATCGCC**

ATGCTACTCCAGACCCACCTTGGGTGGGACTCCTCGGCCTGGTCTTCCCCAGGCCCTGGTCTTAC  
CTGGTGAATGCTGGGTCTAGCCCTGGCCCTCACCAGGTTCTGCCACAGCATGATGGGGCAAGCCC  
AGGACCTCTTACGACAGGACATCCCATGCCACCCAGGGGCTGGAGGGTACCCAGGACAACATGCAT  
CAGATGCACAAGCCTATGGAGTCCATGCACGAGAAGGGCATGCCTGATGACCCACGATACAACCAGATGA  
AAGGGATGGGCATGCGGTGAGGGGCCACACAGGCATGGCACCTCCACCTAGTCCCATGGACCAGCATTC  
TCAAGGTTACCCCTCACCCCTCGGCGGCTCTGAACATGCCTCCAGTCTGTCCCAGCCAGTGGCCCATCT  
TCAGGCCCCAGATGTCTCTGGGCCAGGAGGGGCCCACTAGATGGTTCTGATCCCAGGCCCTGGGAC  
AGCAAAACAGAGGCCCAACCCCATTTAACCAGAACCAGCTGCATCAACTCAGAGCTCAGATAATGGCCTA  
CAAGATGTTGGCCAGGGGCCAGCCATTGCCCGACCACCTGCAGATGGCCGTGCAAGGCAAGCGGCCGATG  
CCTGGAATGCAGCAACAGATGCCAACACTACCTCCACCTCAGTGTCCGCCACAGGACCCGGACCTGGAC  
CCGGCCCTGGCCCTGGCCCTGGCCAGGACCAGCCCTCCAAATTACAGTAGACCCCATGGTATGGGAGG  
GCCCAACATGCCTCCCCAGGACCCTCAGGTGTGCCCCCGGGATGCCTGGTCCAGCCCTGGAGGGCCT  
CCCAAGCCATGGCCTGAAGGACCATGGCCAATGCTGCTGCCCCACAAGCACCCACAGAAGCTGATTC  
CTCCGCAACCAACAGGCCGTCTTACCTGCACCTCCTGCTGTCCCGCCTGCTGCCTCACCTGTAATGCC  
ACCACAAACACAGTCCCCAGGGCAGCCAGCCAGCCTGCTCCATTGGTGCCACTGCACCAGAAGCAGAGC  
CGAATCACCCCATCCAGAAGCCCGAGGCCTTGACCCTGTGGAGATCCTACAAGAGCGGGAGTACAGGC  
TTCAGGCTCGAATCGCACACAGAATTCAGGAACCTGAAAACCTCCCTGGGTCCCTGGCTGGGGACCTTCG  
AACCAAGCAACCATCGAACTCAAGGCCCTTAGGTTGCTGAACTCCAGAGGCAGCTGCGCCAGGAGGTG  
GTGGTGTGCATGCGAAGAGACACAGCCCTGGAGACAGCCCTCAATGCCAAGGCCTACAAGCGCAGCAAAC  
GTCAGTCACTACGGGAGGCCCGCATCACTGAGAAGTTGGAGAAGCAGCAGAAGATTGAACAGGAGCGCAA  
GCGCCCCAGAAGCACCAGGAGTACCTCAACAGCATTCTGCAGCATGCCAAGGACTTCAGGGAGTATCAC



[View online »](#)

AGATCAGTCACAGGCAAACCTCCAGAACTACCAAGGCTGTGGCCACCTACCATGCCAACACTGAGCGGG  
 AGCAGAAGAAAGAAAATGAGCGCATTGAGAAGGAGCGAATGCGGAGGCTTATGGCTGAAGATGAGGAGGG  
 CTACCGCAAACCTCATTGACCAGAAGAAGGACAAGCGCCTGGCCTACCTTCTGCAGCAGACAGATGAGTAT  
 GTGGCCAACTCACAGAGCTGGTGCAGCAGCACAAGCTGCCAGGTTGCCAAGGAGAAGAAGAAGAAA  
 AGAAAAAGAAGAAGGCAGAAAAATGCTGAAGGACAGACCTGCTATTGGACCAGATGGTGAAGCCTCTGGA  
 TGAGACCAGCCAGATGAGTGACCTCCCTGTGAAGGTGATCCACGTGGAGAGTGGCAAGATCCTCACTGGC  
 ACAGATGCCCCAAAAGCCGGGCAGCTGGAAGCCTGGCTTGAATGAACCCAGGGTATGAAGTAGCCCCCA  
 GGTGACAGCAGTGAAGAAAGTGGCTCTGAAGAGGAGGAGGAGGAGGAAGAGGAGCAGCCTCAGCCCGC  
 ACAGCCCCCTACACTGCCTGTGGAAGAAAAAGAAGATTCCAGACCCAGACAGCGATGATGTCTCTGAG  
 GTGGACGCCGACACATTATTGAGAACGCCAAGCAAGATGTGGACGATGAGTACGGTGTGTCCCAGGCC  
 TTGCTCGTGGCCTGCAGTCTTACTATGTGTGGCCATGCAGTACAGAGAGAGTATGATAAGCAGTCCGC  
 CCTCATGGTCAACGGTGTCTCAAACAGTACCAGATCAAGGGTTTGGAGTGGCTGGTGTCCCTGTACAAC  
 AACACCTGAATGGCATCCTGGCTGATGAGATGGGGCTGGGAAGACCATCCAGACCATCGCGCTCATCA  
 CATACCTCATGGAGCACAAGCGCATCAACGGCCCTTCCCTCATCATCGTGCCTCTCTCGACTGTCAA  
 CTGGGCGTATGAATTTGACAAGTGGGCCCTCTGTGGTGAAGGTTTCTACAAGGGCTCTCCAGCTGCA  
 AGGCGAGCTTTTGTCCCACAGCTTCGCAGTGGGAAGTTCAACGTCTTACTGACCCTATGAATATATCA  
 TCAAAGACAAGCATATCCTAGCCAAGATCCGCTGGAAGTACATGATTGTGGATGAAGGCCACCGCATGAA  
 AAACCACCACTGCAAGTTGACGCAGTCCCTAACACACACTACGTGGCCCTCGGCGCCTGCTTCTTACA  
 GGCACACCCTGCAGAACAAGCTACCGGAGCTCTGGGCCCTGCTTAACTTCTGTCTCCCACTATCTTCA  
 AGAGCTGCAGCACCTTCGAACAGTGGTTCAATGCACCTTTGCCATGACTGGAGAAAAGTGGACCTGAA  
 TGAAGAGGAGACTATCCTCATTATTCGTCGCCTACACAAAGTTCGCGCCCTTCTGTGCGGCGGCTC  
 AAGAAGGAAGTTGAAGCCAGCTCCCTGAGAAGGTAGAGTATGTCATCAAATGCGACATGTCAGCCCTGC  
 AGCGTGTGCTGTACCGTCACATGCAGGCAAAGTGTGCTGCTGACTGACGGCTCCGAGAAGGAGGAGG  
 GGGCAAAGGTGGCAACAAGACACTGATGAACACTATTATGCAACTGCGTAAAGATCTGCAACCACCCCTAC  
 ATGTTCCAGCACATCGAGGAGTCCTTTTCTGAGCACTTGGGGTTCACCGCGGCATCGTGAAGGATTGG  
 ACCTTTACCGTGCCTCAGGGAATTTGAACTTCTTGATAGAATTCTACCCAACTCCGTGCAACGAACCA  
 TAAAGTGTCTCTTTTGCCAAATGACCTCCCTCATGACCATCATGGAAGACTACTTTGCATACCGTGGC  
 TTCAAATACCTCAGGCTTGATGGAACCACAAAAGCAGAAGACCGGGGCATGCTGTTGAAAACCTTTAATG  
 AACCTGGCTCTGAGTATTTCAATTTCTGCTCAGTACCCGTGCTGGGGGCTGGGCTGAATCTGCAGTC  
 AGCTGACACTGTGATCATCTTTGACAGTACTGGAATCCCAACAGGACCTGCAAGCACAGGATCGAGCC  
 CATCGCATTGGACAGCAGAAATGAGGTGCGTGTCTTCGCTGTGCACGGTCAACAGTGTGGAAGAGAAGA  
 TACTGGCTGCTGCCAAATACAACTCAATGTGGATCAGAAGGTGATCCAGGCAGGATGTTGACACAGAA  
 GTCGTCCAGCCATGAGAGGCGTGCCTTCTGCAGGCCATCCTGGAGCACGAGGAGCAGGATGAGGAGGAA  
 GATGAGGTGCCTGATGATGAGACCGTCAACCAGATGATTGCCCGGCACGAAGAAGAGTTTACCTCTTCA  
 TGCGCATGGACTTGACCGCCGGCGTGAAGAAGCCCGCAACCCCAAGCGGAAGCCACGCCTGATGGAAGA  
 GGATGAGCTCCCATCCTGGATCATCAAGGATGATGCCGAGGTGGAGCGGCTGACATGTGAAGAGGAAGAG  
 GAGAAGATGTTTCGGCCGTGGTTCTCGCCACCGCAAGGAGGTAGACTACAGCGACTCACTGACAGAGAAGC  
 AGTGGCTCAAGACCCTGAAGGCTATCGAGGAGGACAGCGTGGAGGAGATCGAAGAGGAGGTCCGGCAGAA  
 GAAATCTTCACGTAAGCGTAAGCGAGACAGCGAGGCGGCTCTCCACCCGACCACAGCACCCCGCAGC  
 CGTGACAAGGATGAGGAGAGCAAGAAGCAGAAGAAACGTGGGCGGCCACCTGCTGAGAAGCTGTCCCAA  
 ACCCACCTAACCTCACCAGAAGATGAAGAAGATCGTGGATGCTGTGATCAAGTACAAAGACAGCAGCAG  
 TGGACGTGAGCTCAGCGAGGTGTTTATCCAGCTCCCTCTCGCAAGGAGCTTCTGAGTACTATGAGCTC  
 ATCCGAAAGCCTGTGGACTTCAAGAAGATCAAGGAACGCATCCGAAACCACAAGTACCGCAGCCTCAATG  
 ACCTGGAGAAGGATGTGATGCTGCTGTGCCAGAACGCTCAGACGTTCAACCTCGAGGGTTCCCTGATCTA  
 TGAGGACTCCATCGTCTGCAGTCTGTCTTACCAGCGTACGGCAGAAGATTGAGAAGGAGGACGACAGT  
 GAAGGCGAGGAAAGCGAGGAGGAGGAGGGGCGAGGAGGAAGGCTCCGAGTCTGAGTCCGCTCCGTCA  
 AGGTGAAGATCAAGCTGGGCCGCAAGGAGAAGGCCAGGACCGACTCAAGGGGGCCGCGCGGCCAAG  
 CCGGGGATCCCGGCCAAGCCGGTTGTGAGTGACGATGACAGTGAAGGAGGAGCAGGAGGAGGACCGCTCA  
 GGAAGTGGCAGTGAGGAAGAC

ACGCGTACGCGGCCGCTCGAG - GFP Tag - GTTTAA

**Protein Sequence:** >MG227459 representing NM\_001174078  
 Red=Cloning site Green=Tags(s)

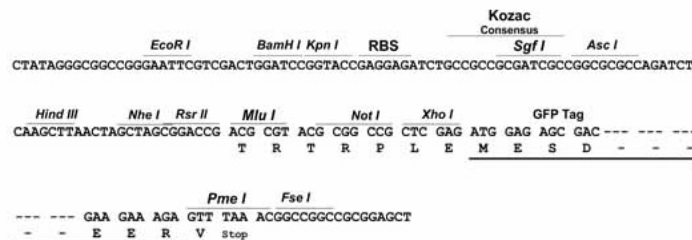
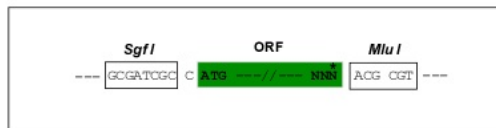
MSTDPPLGGTPRPGSPGPGSPGAMLGPSGPGSPGSAHSMGSPGPPSAGHPMPTQGGPGYPQDNMH  
 QMHKPMESMHEKGMPDDPRYNQMKGMGRSGAHTGMAPPSPMDQHSQGYPSPLGGSEHASSPVPASGSPS  
 SGPQMSSSGPGGAPLDGSDPQALGQONRGPTPFNQNLHQLRAQIMAYKMLARGQPLPDHLQMAVQGRPM  
 PGMQQQMPTLPSPSVSATGPGPGPGPGPGPGPAPPNYSRPHGMGGPNMPPGSPGSPGVPMPGQPPGGP  
 PKPWPEGPMANAAAPTSTPQKLIPPQPTGRPSAPPAPVPPAASPVMPPQTQSPGQPAQPAPLVPLHQKQS  
 RITPIQKPRGLDPEILQEREYRLQARIAHRIQELENLPGSLAGDLRTKATIELKALRLLNFQRQLRQEV  
 VVCMRRDTALETALNAKAYKRSKRQSLREARITEKLEKQKQIEQERKRRQKHQEYLNLSILQHAQDFREYH  
 RSVTGKQLKLTAVATYHANTEREQKKENERIEKERMRLMADEEGYRKLIDQKKDKRLAYLLQQTDEY  
 VANLTELVRQHKAAQVAKEKKKKKKKAENAEGQTPAIGPDGEPLDETSQMSDLPVKVIHVESGKILTG  
 TDAPKAGQLEAWLEMNPGYEVAPRSDSEESGSEEEEEEEEEEQPQAQPPTLPVEEKKIPDPDSDVSE  
 V DARHIIENAKQVDDEYGVSQLARGLQSYAVAHAVTERVDKQSALMVNGVLKQYQIKGLEWLVSLYN  
 NNLNGILADEMGLKTIQTIALITYLMEHKRINGPFLIIVPLSTLSNWAYEFDKWAPSVVKVSYKGPAA  
 RRAFPVQLRSGKFNVLTTYEYI IKDKHILAKIRWKYMI VDEGHRMKNHHCKLTQVLNTHYVAPRLLLLT  
 GTPLQNKLPPELLWALLNFLLP TIFKSCSTFEQWFNAPFAMTGEKVDLNEEETILIRRLHKVLRPFLRLR  
 KKEVEAQLPEKVEYVIKCDMSALQRVLYRHMQAKGVLLTDGSEKDKKGGTKTLMNTIMQLRKICNHPY  
 MFQHIEESFSEHLGFTGGIVQGLDLYRASGKFELLDRIPLKLRATNHNKVLFCQMTSLMTIMEDYFAYRG  
 FKYLRLDGTTKAEDRGMLLKTTFNEPGSEYFIFLLSTRAGGLNLQSADTVIIFDSDWNP HQDLQAQDRA  
 HRIGQQNEVRVRLRLCTVNSVEEKILAAAKYKLNVDQKVIQAGMFDQKSSSHERRAFLQAILEHEEQDEEE  
 DEVPDDET VNQMIARHEEEFDL FMRMDLDRRREEARNPKRKPRLMEDELPSWIKDDAEVERLTCEEEE  
 EKMFGRGSRHRKEVDYSDSLTEKQWLKTLKAIEEGTLEEIEEEVQRKSSRKRKR DSEAGSSTPTSTRS  
 RDKDEESKKQKGRPPAEKLSNPNNLTKMKKIVDAVIKYKDS SGRQLSEVF IQLPSRKELPEYYEL  
 IRKPVDFKKIKERIRNHKYRSLNDLEKDVMLLCQNAQTFNLEGLSIYEDSIVLQSVFTSVRQKIEKEDDS  
 EGEESEEEEEEGESESESRSVKVIKLRKEKAQDRLKGGRRRPSRGSRAKPVVSDDDSEEEQEEDRS  
 GSGSEED

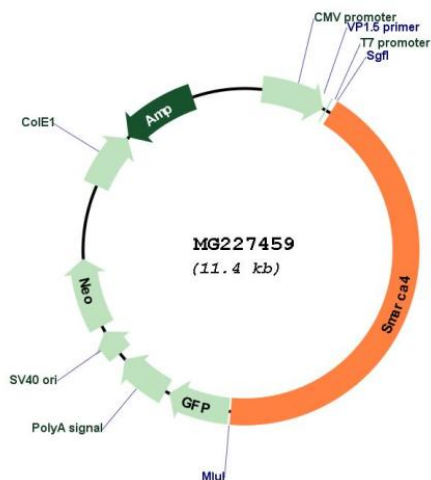
TRTRPLE - GFP Tag - V

**Restriction Sites:** SgfI-MluI

**Cloning Scheme:**

Cloning sites used for ORF Shutting:



**Plasmid Map:**


**ACCN:** NM\_001174078

**ORF Size:** 4851 bp

**OTI Disclaimer:** The molecular sequence of this clone aligns with the gene accession number as a point of reference only. However, individual transcript sequences of the same gene can differ through naturally occurring variations (e.g. polymorphisms), each with its own valid existence. This clone is substantially in agreement with the reference, but a complete review of all prevailing variants is recommended prior to use. [More info](#)

**OTI Annotation:** This clone was engineered to express the complete ORF with an expression tag. Expression varies depending on the nature of the gene.

**Components:** The ORF clone is ion-exchange column purified and shipped in a 2D barcoded Matrix tube containing 10ug of transfection-ready, dried plasmid DNA (reconstitute with 100 ul of water).

**Reconstitution Method:**

1. Centrifuge at 5,000xg for 5min.
2. Carefully open the tube and add 100ul of sterile water to dissolve the DNA.
3. Close the tube and incubate for 10 minutes at room temperature.
4. Briefly vortex the tube and then do a quick spin (less than 5000xg) to concentrate the liquid at the bottom.
5. Store the suspended plasmid at -20°C. The DNA is stable for at least one year from date of shipping when stored at -20°C.

**RefSeq:** [NM\\_001174078.1](#), [NP\\_001167549.1](#)

**RefSeq Size:** 6376 bp

**RefSeq ORF:** 4854 bp

Locus ID: 20586

UniProt ID: [Q3TKT4](#)

Cytogenetics: 9 7.84 cM

**Gene Summary:** Involved in transcriptional activation and repression of select genes by chromatin remodeling (alteration of DNA-nucleosome topology). Component of SWI/SNF chromatin remodeling complexes that carry out key enzymatic activities, changing chromatin structure by altering DNA-histone contacts within a nucleosome in an ATP-dependent manner. Component of the CREST-BRG1 complex, a multiprotein complex that regulates promoter activation by orchestrating the calcium-dependent release of a repressor complex and the recruitment of an activator complex. In resting neurons, transcription of the c-FOS promoter is inhibited by SMARCA4-dependent recruitment of a phospho-RB1-HDAC repressor complex. Upon calcium influx, RB1 is dephosphorylated by calcineurin, which leads to release of the repressor complex. At the same time, there is increased recruitment of CREBBP to the promoter by a CREST-dependent mechanism, which leads to transcriptional activation. The CREST-BRG1 complex also binds to the NR2B promoter, and activity-dependent induction of NR2B expression involves the release of HDAC1 and recruitment of CREBBP (By similarity). Belongs to the neural progenitors-specific chromatin remodeling complex (npBAF complex) and the neuron-specific chromatin remodeling complex (nBAF complex). During neural development, a switch from a stem/progenitor to a postmitotic chromatin remodeling mechanism occurs as neurons exit the cell cycle and become committed to their adult state. The transition from proliferating neural stem/progenitor cells to postmitotic neurons requires a switch in subunit composition of the npBAF and nBAF complexes. As neural progenitors exit mitosis and differentiate into neurons, npBAF complexes which contain ACTL6A/BAF53A and PHF10/BAF45A, are exchanged for homologous alternative ACTL6B/BAF53B and DPF1/BAF45B or DPF3/BAF45C subunits in neuron-specific complexes (nBAF). The npBAF complex is essential for the self-renewal/proliferative capacity of the multipotent neural stem cells. The nBAF complex along with CREST plays a role in regulating the activity of genes essential for dendrite growth. SMARCA4/BAF190A may promote neural stem cell self-renewal/proliferation by enhancing Notch-dependent proliferative signals, while concurrently making the neural stem cell insensitive to SHH-dependent differentiating cues. Acts as a corepressor of ZEB1 to regulate E-cadherin transcription and is required for induction of epithelial-mesenchymal transition (EMT) by ZEB1 (By similarity). Binds via DLX1 to enhancers located in the intergenic region between DLX5 and DLX6 and this binding is stabilized by the long non-coding RNA (lncRNA) Evf2 (PubMed:26138476). Binds to RNA in a promiscuous manner (PubMed:26138476). Binding to RNAs including lncRNA Evf2 leads to inhibition of SMARCA4 ATPase and chromatin remodeling activities (PubMed:26138476).[UniProtKB/Swiss-Prot Function]