

Product datasheet for **MG227458**

Trim33 (NM_001079830) Mouse Tagged ORF Clone

Product data:

Product Type: Expression Plasmids
Product Name: Trim33 (NM_001079830) Mouse Tagged ORF Clone
Tag: TurboGFP
Symbol: Trim33
Synonyms: 8030451N04Rik; AI413936; Ecto; Tif1g
Mammalian Cell Selection: Neomycin
Vector: pCMV6-AC-GFP (PS100010)
E. coli Selection: Ampicillin (100 ug/mL)
ORF Nucleotide Sequence: >MG227458 representing NM_001079830
 Red=Cloning site Blue=ORF Green=Tags(s)

TTTTGTAATACGACTCACTATAGGGCGGCCGGAATTCGTCGACTGGATCCGGTACCGAGGAGATCTGCC
 GCC**CGATCGCC**

ATGGCGGAAAACAAGGCGGGTGGAGGCAGAGAGTGGCGGGGGGCGAGCGGTAGCGCGCCGTAACCG
 CCGGGGCCCGGGCCACGGCGCAGGAGGCGGAGCCGCCTCTCGCCGCGGTGCTGGTGGAGGAGGAGGA
 GGAGGAAGGCGGCAGGGCTGGCGCGGAGGGCGGTGCGGCTGGGCCGACGACGGGGGGTGGCCGCGCC
 TCCTCAAGCTCGGCCCGCCGCTCGTCCCCGCGCCTCAGTGGGCTCCGCGGTCCCCGAGGCGCGG
 CATCGACGCCGGTCCAGCTGTGCCCCAGCCCCGGCCCCGGCCCCGGCCCCGGCCCCGCTCC
 CGCCCCGCTCCTGGTTCCTCGTCGGGGCCACCTCTCGGACCACAGCCTCGCTTCTGGACACTGCGCG
 GTGTGTCAGCAGAGCTTGACAGAGCCGGCGGAGGCGGAGCCCAAGCTGCTCCCCTGCCTGCACTCCTTCT
 GCCTGCGTGTCTGCCGGAGCCGGAGCGCCAGCTCAGCGTGCCCATCCCTGGGGGCGCAACGGTGACGT
 CCAGCAAGTTGGTGTAAACGGTGTCCAGTATGTCGTCAAGAATGTAGACAGATAGATCTTGTGGATAAT
 TATTTTGTGAAAGACACATCTGAAGCTCCTAGCAGCTCTGATGAGAAATCAGAACAGGTATGACTAGTT
 GTGAAGATAATGCAAGTGCAGTTGGTTTTGTGTAGAATGTGGAGAGTGGCTGTGAAGACATGCATTGA
 AGCACATCAAAGAGTAAAATTCATAAAGACCACCTGATCAGGAAAAAAGAAGATGTCTCAGAGTCTGTT
 GGAACATCTGGTCAGCGCCAGTGTGTTGTCCTGTACATAAACAAGAGCAGTTGAAACTATTCTGTGAAA
 CGTGTGATAGATTGACGTGTAGAGACTGTCAACTTTTGGAGCACAAAGAACATAGGTATCAGTTTTTAGA
 AGAGGCTTTTCAAATCAGAAAGGTGCAATTGAAAATCTGTTGGCTAAGCTTCTTGAAGAAGAATTAT
 GTTCATTTTGCAGCTACACAAGTGCAGAAATAGGATTAAGAAGTAAATGAGACTAACAAACGTGTAGAAC
 AGGAAATTAAGTGGCCATCTTACCCTTATCAATGAAATTAATAAGAAAGGAAATCTCTCTTGAACA
 GCTAGAGAATGTTACAAAAGAAAGACAGATGAAGTTACTACAGCAGCAGAAATGATATCACAGGCCTCC
 CGGCAGGTGAAGCATGTTATGAACTTTACAAACTGGGCCATTGCAAGTGGCAGCAGCACGGCCCTACTTT
 ATAGCAAGCGTCTGATTACTTTTCAAGTACGTCATATTTTGAAGCCCGATGTGATCCTGTTCTGCTGC
 CAATGGAGCAATTCGTTTCCATTGTGATCCACCTTCTGGCCAAAAATGTAGTGAATTTAGGTAATCTA



GTAATAGAGAGTAAGCCAGCTCCTGGTTATACTCCTAATGTTGTAGTTGGGCAAGTTCCTCCAGGGACAA
 ACCACATTAGTAAAACCCCTGGACAGATTAATTTAGCACAGCTTCGACTCCAGCAGATGCAGCAACAAGT
 GTATGCACAGAAACATCAGCAGTTACAACAGATGAGACTGCAGCAACCACCAGCTCCTATACCAACAACA
 ACAGCAACAACCCAGCAGCATCCTAGGCAAGCAGCCCCACAGATGTTACAACAACAGCCTCCAAGATTGA
 TCAGTGTGCAACAATGCAAAGAGGCAACATGAACTGTGGAGCATTTCAGGCCATCAAATGAGACTGGC
 TCAGAATGCTGCCAGAATACCAGGGATCCCCAGGCACAGTGCCCTCAGTATCCATGATGCAGCCACAT
 CTCCAAGACAACATTCAAATCCAGGACATGCTGGACCGTTTCCTGTTGTATCAGCACACAACCCAATCA
 ACCCAACAAGTCCCACCACAGCAACTATGGCAAATGCAAATCGAGGTCCCACCAGCCCGTCTGTTACAGC
 AATAGAATTAATACCCTCAGTCACCAATCCAGAAAACCTTCCATCGTTGCCAGATATCCCACCTATACAG
 TTGGAAGATGCTGGCTCAAGTAGTTTAGATAATCTACTGAGTAGATATATCTCAGGCAGTCATCTACCCC
 CTCAGCCTACAAGTACCATGAATCCTTCCCAGGACCCTCTGCGTTATCACCTGGATCTTCAGGCTTATC
 CAATTCTCACACACCTGTGAGACCCCTAGCACGTCTAGTACTGGCAGTCGAGGCAGCTGCGGATCATCA
 GGAAGAACTGCTGAGAAAAGTGTCTATAGTTTCAAGTCTGATCAGGTGAAGGTCAAGCAGGAACCTGGGA
 CTGAAGAAGAGATATGCAGCTTTTCAGGAGCTGTGAAACAAGAGAAGACAGAGGATGGCAGGAGGAGTGC
 CTGTATGTTGAGCAGTCTGAGAGTAGTTTGACACCACCTCTTCAACTAACCTTACCTAGAGAGTGGAG
 CTGGATACATTAAACAGGCCTGGAGAACCAGTGAAGACTGAACCTACAGATATCAGTGAAAGCTGCAAAAC
 AGTCAGGACTCAGTAACCTAGTCAATGGAAAGTCTCAATTTCGAAACCTCATGCACAGGTCGGCAAGGAT
 TGGAGGGGATGGCAATAGCAAAGATGATGACCCAAATGAAGACTGGTGTGCCGTCTGCCAGAACGGAGGG
 GATCTTTTGTGTTGTGAGAAATGTCGAAGGTCTTTCATCTTACCTGTGATGTTCCAACACTTCTCAGCT
 TTCCAAGTGGAGACTGGATATGCACATTTTGCAGAGATATTGGGAAGCCAGAAGTTGAATATGATTGTGA
 TAATATGCAGCATAGTAAGAAGGGGAAAACCTGCACAAGGCTTAAAGCCCTGTGGACCAAAGGAAATGTGAA
 CGTCTTCTGCTTACCTCTATTGTCACGAATTAAGTATTGAATTCAGGAGCCTGTTCTGTTTCGATAC
 CAAACTACTATAAAAATTATAAGAAAACCGATGGATTTATCAACGGTGAAGAAGAAGCTTCAGAAAACAA
 TTCCCAGCATTACCAAATCCAGATGACTTTGTGGCTGATGTCGGTTTGATCTTCAAGAACTGTGAAAGG
 TTTAATGAAGGTGATTCAGAAGTAGCTAAGGCAGGGAAGCAGTTGCATTGACTTTGAAGATAAAGTCT
 CAGAGATCTACTCAGACAGGACCTTCACTCCTTTGCCAGAGTTTGAGCAGGACGAAGATGATGGTGAAGT
 AACAGAAGACTCTGACGAAGATTTTATACAGCCTCGTAGAAAACGCCTAAAGTCAGACGAGAGACCAGTA
 CATATAAAG

ACGCGTACGCGGCCGCTCGAG - GFP Tag - GTTTAA

Protein Sequence:

>MG227458 representing NM_001079830
 Red=Cloning site Green=Tags(s)

MAENKGGGEAESGGGSGSAPVTAAGAAPTAEPLAAVLVEEEEEGGRAGAEGGAAGPDDGGVAAA
 SSSSAPAASVPAASVGSVAVPAASTPAPAAAPAPAPAPAPAPAPAGSSSGPPLGPPASLLDTC
 VCQQLSRREAEPKLLPCLHSFCLRCLPEPERQLSVPVPGGSDVQVGVIRCPVCRQECRQIDLVDN
 YFVKDTSEAPSSSDEKSEVQVCTSCEDNASAVGFCVECGEWLCKTCEAHQVRVFKDHLIRKKEDVSESV
 GTSGQRPVFCPVHKQEQLKLFCECTDRLTCRDCQLLEHKEHRYQFLEEAFQVQKGAIEENLLAKLLEKKNY
 VHFAATVQVQRIKEVNETNKRVEQEIKVAIFTLINENKKGKSLQLQLENVTKERQMKLLQQQNDITGLS
 RQVKHVMNFTNWAIASGSSTALLYSKRLITFQLRHLKARCDPVAANGAIRFHCDPTFWAKNVVNLGNL
 VIESKPAPGYTPNVVVGQVPPGTNHISKTPGQINLAQLRLQHMQQVYAQKHQQLQMQMLQPPAPIPPT
 TATTQQHPRQAAPQMLQQPPRLISVQTMQRGMNCGAFQAHQMLAQNAARIPGIPRHSAPQYSMMQPH
 LQRQHSNPGHAGFPVSAHNPINPTSPATTMANANRGPTSPSVTAIELIPSVTNPENLPSLPDIPPIQ
 LEDAGSSSLDNLLSRYISGSHLPPQPTSTMNPSPGPSALSPGSSGLSNSHTPVRPPSTSSSTGSRGSCGSS
 GRTAEKSAHSFKSDQVKVQEPGTEEEICFSFGAVKQEKTEDGRRSACMLSSPESSLTPPLSTNLHLESE
 LDTLTLGLENHVKTEPTDISESCKQSGLSNLVNGKSPIRNLMHRSAIRIGGDGNSKDDDPNEDWCAVCQNGG
 DLLLCEKCPKVFHLLTCHVPTLLSFPDGDWICTFCRDIGKPEVEYDCDNMQHKKGKTAQGLSPVDQRKCE
 RLLLYLYCHELSIEFQEPVPSIPNYYKIIKKPMDLSTVKKLQKKSQHYQIPDDFVADVRLIFKNKER
 FNEGDSEVAKAGKAVALYFEDKLSIYSDRTFTPLPEFEQDEDDGEVTEDESDEFIQPRRRLKSDERP
 HIK

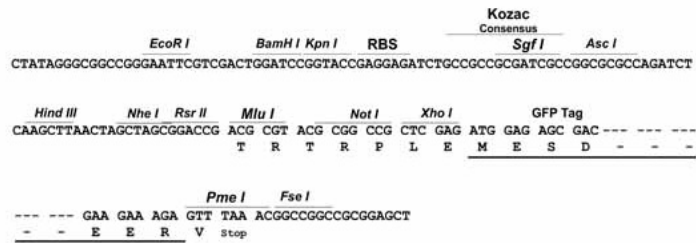
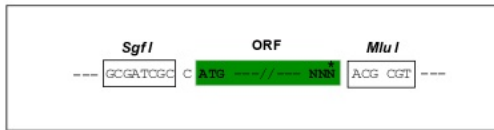
TRTRPLE - GFP Tag - V

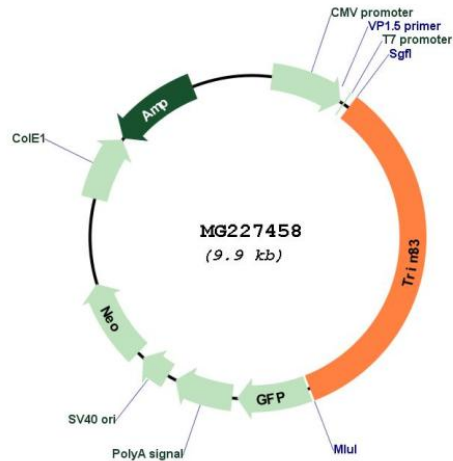
Restriction Sites:

SgfI-MluI

Cloning Scheme:

Cloning sites used for ORF Shuttling:



Plasmid Map:


ACCN: NM_001079830

ORF Size: 3369 bp

OTI Disclaimer: The molecular sequence of this clone aligns with the gene accession number as a point of reference only. However, individual transcript sequences of the same gene can differ through naturally occurring variations (e.g. polymorphisms), each with its own valid existence. This clone is substantially in agreement with the reference, but a complete review of all prevailing variants is recommended prior to use. [More info](#)

OTI Annotation: This clone was engineered to express the complete ORF with an expression tag. Expression varies depending on the nature of the gene.

Components: The ORF clone is ion-exchange column purified and shipped in a 2D barcoded Matrix tube containing 10ug of transfection-ready, dried plasmid DNA (reconstitute with 100 ul of water).

Reconstitution Method:

1. Centrifuge at 5,000xg for 5min.
2. Carefully open the tube and add 100ul of sterile water to dissolve the DNA.
3. Close the tube and incubate for 10 minutes at room temperature.
4. Briefly vortex the tube and then do a quick spin (less than 5000xg) to concentrate the liquid at the bottom.
5. Store the suspended plasmid at -20°C. The DNA is stable for at least one year from date of shipping when stored at -20°C.

RefSeq: [NM_001079830.2](#), [NP_001073299.1](#)

RefSeq Size: 8817 bp

RefSeq ORF: 3372 bp

Locus ID: 94093

UniProt ID: [Q99PP7](#)

Cytogenetics: 3 F2.2

Gene Summary:

Acts as an E3 ubiquitin-protein ligase. Promotes SMAD4 ubiquitination, nuclear exclusion and degradation via the ubiquitin proteasome pathway (By similarity). May act as a transcriptional repressor (By similarity). Inhibits the transcriptional response to TGF-beta/BMP signaling cascade (By similarity). Plays a role in the control of cell proliferation (By similarity). Its association with SMAD2 and SMAD3 stimulates erythroid differentiation of hematopoietic stem/progenitor. Monoubiquitinates SMAD4 and acts as an inhibitor of SMAD4-dependent TGF-beta/BMP signaling cascade (Monoubiquitination of SMAD4 hampers its ability to form a stable complex with activated SMAD2/3 resulting in inhibition of TGF-beta/BMP signaling cascade) (By similarity).[UniProtKB/Swiss-Prot Function]