

## Product datasheet for **MG227446**

### Cd80 (NM\_009855) Mouse Tagged ORF Clone

#### Product data:

Product Type:	Expression Plasmids
Product Name:	Cd80 (NM_009855) Mouse Tagged ORF Clone
Tag:	TurboGFP
Symbol:	Cd80
Synonyms:	B71; Cd28l; Ly-53; Ly53; MIC17; TSA1
Mammalian Cell Selection:	Neomycin
Vector:	pCMV6-AC-GFP (PS100010)
E. coli Selection:	Ampicillin (100 ug/mL)
ORF Nucleotide Sequence:	>MG227446 representing NM_009855 Red=Cloning site Blue=ORF Green=Tags(s)

TTTTGTATACGACTCACTATAGGGCGGCCGGAATTCGTCGACTGGATCCGGTACCGAGGAGATCTGCC  
 GCC**CGATCGC**C

ATGGCTTGCAATTGTCAGTTGATGCAGGATACACCACTCCTCAAGTTTCCATGTCCAAGGCTCATTCTTC  
 TCTTTGTGCTGCTGATTCTTCACAAGTGTCTTCAGATGTTGATGAACAAGTGTCCAAGTCACTGAA  
 AGATAAGGTATTGCTGCCTTGCCGTTACAACCTCCTCATGAAGATGAGTCTGAAGACCGAATCTACTGG  
 CAAAAACATGACAAAGTGGTGTGTCTGTCATTGCTGGGAACTAAAAGTGTGGCCCGAGTATAAGAACC  
 GGACTTTATATGACAACACTACCTACTCTTATCATCCTGGGCCTGGTCTTTTCAGACCGGGGCACATA  
 CAGCTGTGTCGTTCAAAAGAAGGAAAGAGGAACGTATGAAGTTAAACACTTGGCTTTAGTAAAGTTGTCC  
 ATCAAAGCTGACTTCTCTACCCCAACATAACTGAGTCTGGAAACCCATCTGCAGACACTAAAAGGATTA  
 CCTGCTTTGCTTCGGGGGTTTCCCAAAGCCTCGCTTCTCTTGTTGGAAAATGGAAGAGAATTACCTGG  
 CATCAATACGACAATTTCCAGGATCCTGAATCTGAATTGTACACCATTAGTAGCCAAGTACATTCAAT  
 ACGACTCGCAACCACACCATTAAAGTGTCTCATTAAATATGGAGATGCTCAGTGTGAGGAGCTTCACT  
 GGGAAAAACCCCAAGACCCCTCTGATAGCAAGAACACACTTGTGCTCTTTGGGGCAGGATTCGGCGC  
 AGTAATAACAGTCGTCGTCATCGTTGTCATCATCAAATGCTTCTGTAAGCACAGAAGCTGTTTCAGAAGA  
 AGAAATGAGGCAAGCAGAGAAACAAACACAGCCTTACCTTCGGGCCTGAAGAAGCATTAGCTGAACAGA  
 CGTCTTCCTT

**ACGCGT**ACGCGGCCGCTCGAG - GFP Tag - GTTTAA


[View online »](#)

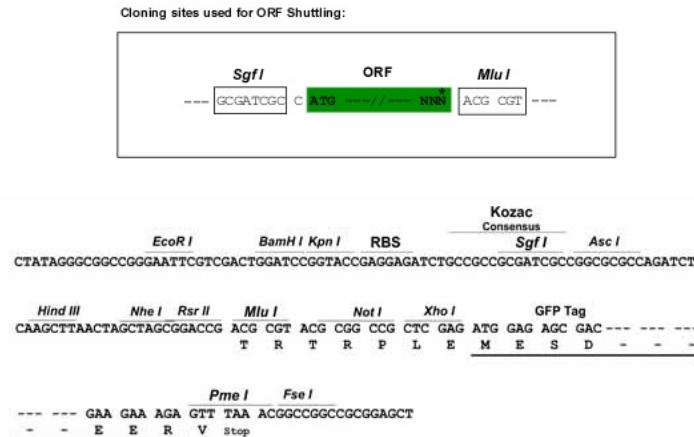
**Protein Sequence:** >MG227446 representing NM\_009855  
 Red=Cloning site Green=Tags(s)

MACNCQLMQDTPLLKFPCLILLFVLLIRLSQVSSDVDEQLSKSVKDKVLLPCRYNSPHEDESEDRIYW  
 QKHKVVLVSVIAGKLKVWPEYKNRTLYDNTTYSLLIILGLVLSDRGTYSVVQKKERGTYEVKHLALVKLS  
 IKADFSTPNITESGNPSADTKRITCFASGGFPKPRFSWLENGRELPGINTTISQDPESELYTISSQLDFN  
 TTRNHTIKCLIKYGDHVSDFTWKPPEDPPDSKNTLVLFAGAGVITVVVIVVVIKCFCKHRSCFRR  
 RNEASRETNNSLTFGPPEALAEQTVFL

TRTRPLE - GFP Tag - V

**Restriction Sites:** SgfI-MluI

**Cloning Scheme:**



**ACCN:** NM\_009855

**ORF Size:** 921 bp

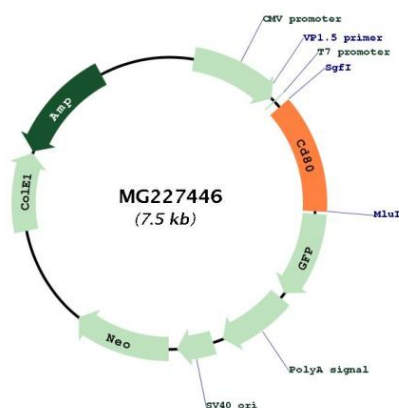
**OTI Disclaimer:** Due to the inherent nature of this plasmid, standard methods to replicate additional amounts of DNA in E. coli are highly likely to result in mutations and/or rearrangements. Therefore, OriGene does not guarantee the capability to replicate this plasmid DNA. Additional amounts of DNA can be purchased from OriGene with batch-specific, full-sequence verification at a reduced cost. Please contact our customer care team at [custsupport@origene.com](mailto:custsupport@origene.com) or by calling 301.340.3188 option 3 for pricing and delivery.

The molecular sequence of this clone aligns with the gene accession number as a point of reference only. However, individual transcript sequences of the same gene can differ through naturally occurring variations (e.g. polymorphisms), each with its own valid existence. This clone is substantially in agreement with the reference, but a complete review of all prevailing variants is recommended prior to use. [More info](#)

**OTI Annotation:** This clone was engineered to express the complete ORF with an expression tag. Expression varies depending on the nature of the gene.

<b>Components:</b>	The ORF clone is ion-exchange column purified and shipped in a 2D barcoded Matrix tube containing 10ug of transfection-ready, dried plasmid DNA (reconstitute with 100 ul of water).
<b>Reconstitution Method:</b>	<ol style="list-style-type: none"> <li>1. Centrifuge at 5,000xg for 5min.</li> <li>2. Carefully open the tube and add 100ul of sterile water to dissolve the DNA.</li> <li>3. Close the tube and incubate for 10 minutes at room temperature.</li> <li>4. Briefly vortex the tube and then do a quick spin (less than 5000xg) to concentrate the liquid at the bottom.</li> <li>5. Store the suspended plasmid at -20°C. The DNA is stable for at least one year from date of shipping when stored at -20°C.</li> </ol>
<b>RefSeq:</b>	<u>NM_009855.2, NP_033985.3</u>
<b>RefSeq Size:</b>	1701 bp
<b>RefSeq ORF:</b>	921 bp
<b>Locus ID:</b>	12519
<b>UniProt ID:</b>	<u>Q00609</u>
<b>Cytogenetics:</b>	16 26.86 cM
<b>Gene Summary:</b>	Involved in the costimulatory signal essential for T lymphocytes activation. T-cell proliferation and cytokine production is induced by the binding of CD28 or CTLA-4 to this receptor. [UniProtKB/Swiss-Prot Function]

## Product images:



Circular map for MG227446