

Product datasheet for **MG227435**

Ihh (NM_010544) Mouse Tagged ORF Clone

Product data:

Product Type:	Expression Plasmids
Product Name:	Ihh (NM_010544) Mouse Tagged ORF Clone
Tag:	TurboGFP
Symbol:	Ihh
Synonyms:	HHG-2
Mammalian Cell Selection:	Neomycin
Vector:	pCMV6-AC-GFP (PS100010)
E. coli Selection:	Ampicillin (100 ug/mL)



[View online »](#)

ORF Nucleotide Sequence:

>MG227435 representing NM_010544
 Red=Cloning site Blue=ORF Green=Tags(s)

TTTTGTAATACGACTCACTATAGGGCGGCCGGGAATTCGTCGACTGGATCCGGTACCGAGGAGATCTGCC
 GCC**CGCATCGCC**

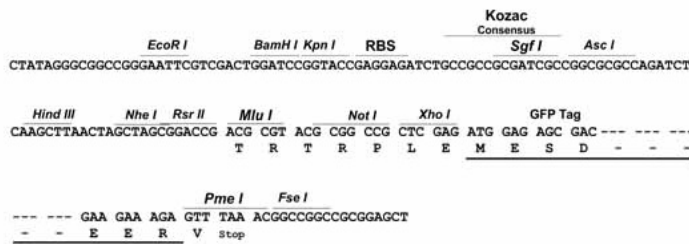
ATGGAGTCCCAAGAGCCACCCAGACGCCTGAGTCCCGAAGCTGTCCAGCCACGCGCCACCTATCAG
 CCCACCAGGCGCCTCGCCCGCTGCTCTCCCGGGCTACCCGGCCATGTCTCCCGCCTGGCTCCGGCCCCG
 ACTGCGGTTCTGTCTGTTCTGTGCTGCTGCTTCTGGTGCCGGCGGCGCGGGGCTGCGGCCGGGCGG
 GTGGTGGGAGCCGCGGAGGCCGCTCGCAAGCTCGTGCCTCTTGCCTACAAGCAGTTCAGCCCCAACG
 TGCCGGAGAAGACCCTGGGCGCCAGCGGGCCTACGAAGCAAGATCGCGCGCAGCTCTGAGCGTTCAA
 AGAGCTCACCCCAACTACAATCCCGACATCATCTTCAAGGACGAGGAGAACACGGGTGCCGACCGCCTC
 ATGACCCAGCGTGAAGGACCGTCTGAACTACTGGCCATCTCTGTATGAACCAAGTGGCTGGTGTGA
 AACTGCGGGTACCGAAGGCTGGGATGAAGATGGCCATCACTCAGAGGAGTCTTTAACTATGAGGGCCG
 CGCGGTGGATATACCACCTCAGACCGTACCGAAATAAGTATGGACTGCTGGCGCGCTTAGCAGTGGAG
 GCCGGTTCGACTGGGTGATTACGAGTCCAAGGCCACGTGCATTGCTCTGTCAAGTCTGAGCATTCCGG
 CCGCTGCCAAGACAGGTGGCTGCTTTCCTGCCGAGCCAGGTGCGCCTAGAGAACGGGGAGCGTGTGGC
 CCTGTCAGCTGTAAGGCCAGGAGACCGGGTGTGGCCATGGGGGAGGATGGGACCCACCTTCAGTGAT
 GTGCTATTTTCTGGACCGGAGCCAAACCGGCTGAGAGCTTTCAGGTTCATCGAGACTCAGGATCCTC
 CGCGTGGCTGGCGCTCACGCTGCCACCTGCTTTCATTGCGGACAATCATACAGAACCAGCAGCCCA
 CTTCCGGGCCACATTTGCCAGCCATGTGCAACCAGGCCAATATGTGCTGGTATCAGGGGTACCAGGCCTC
 CAGCCTGCTCGGGTGGCAGCTGTCTCCACCCAGTGGCCCTTGGTCTTATGCTCCTCTACAAGGCATG
 GGACACTGTGGTGGAGGATGTGGTGGCCTCTGCTTTGCAGCTGTGGCTGACCACCATGGCTCAGTT
 GGCCCTTGGCCCTGCGACTGTTTCCAGTTTGGCATGGGGCAGCTGGACCCCAAGTGAGGGTGTTCAC
 TGGTACCCTCAGATGCTCTACCGCTGGGGCTCTTGTCTAGAAGAGAGCACCTTCCATCCACTGGGCA
 TGCTGGGGCAGGAAGC

ACGCGTACGCGGCCGCTCGAG - GFP Tag - GTTTAA

**Restriction Sites:
 Cloning Scheme:**

SgfI-MluI

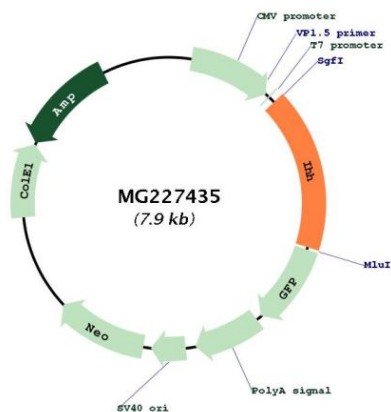
Cloning sites used for ORF Shutting:



ACCN: NM_010544
 ORF Size: 1347 bp

OTI Disclaimer:	<p>Due to the inherent nature of this plasmid, standard methods to replicate additional amounts of DNA in E. coli are highly likely to result in mutations and/or rearrangements. Therefore, OriGene does not guarantee the capability to replicate this plasmid DNA. Additional amounts of DNA can be purchased from OriGene with batch-specific, full-sequence verification at a reduced cost. Please contact our customer care team at custsupport@origene.com or by calling 301.340.3188 option 3 for pricing and delivery.</p> <p>The molecular sequence of this clone aligns with the gene accession number as a point of reference only. However, individual transcript sequences of the same gene can differ through naturally occurring variations (e.g. polymorphisms), each with its own valid existence. This clone is substantially in agreement with the reference, but a complete review of all prevailing variants is recommended prior to use. More info</p>
OTI Annotation:	This clone was engineered to express the complete ORF with an expression tag. Expression varies depending on the nature of the gene.
Components:	The ORF clone is ion-exchange column purified and shipped in a 2D barcoded Matrix tube containing 10ug of transfection-ready, dried plasmid DNA (reconstitute with 100 ul of water).
Reconstitution Method:	<ol style="list-style-type: none"> 1. Centrifuge at 5,000xg for 5min. 2. Carefully open the tube and add 100ul of sterile water to dissolve the DNA. 3. Close the tube and incubate for 10 minutes at room temperature. 4. Briefly vortex the tube and then do a quick spin (less than 5000xg) to concentrate the liquid at the bottom. 5. Store the suspended plasmid at -20°C. The DNA is stable for at least one year from date of shipping when stored at -20°C.
RefSeq:	NM_010544.2 , NP_034674.1
RefSeq Size:	2464 bp
RefSeq ORF:	1236 bp
Locus ID:	16147
UniProt ID:	P97812
Cytogenetics:	1 38.55 cM
Gene Summary:	Intercellular signal essential for a variety of patterning events during development. Binds to the patched (PTC) receptor, which functions in association with smoothened (SMO), to activate the transcription of target genes. Implicated in endochondral ossification: may regulate the balance between growth and ossification of the developing bones. Induces the expression of parathyroid hormone-related protein (PTHrP).[UniProtKB/Swiss-Prot Function]

Product images:



Circular map for MG227435