

Product datasheet for **MG227421**

Pdx1 (NM_008814) Mouse Tagged ORF Clone

Product data:

Product Type:	Expression Plasmids
Product Name:	Pdx1 (NM_008814) Mouse Tagged ORF Clone
Tag:	TurboGFP
Symbol:	Pdx1
Synonyms:	IDX-1; IPF-1; Ipf1; Mody4; pdx-1; STF-1
Mammalian Cell Selection:	Neomycin
Vector:	pCMV6-AC-GFP (PS100010)
E. coli Selection:	Ampicillin (100 ug/mL)
ORF Nucleotide Sequence:	>MG227421 representing NM_008814 Red=Cloning site Blue=ORF Green=Tags(s)

TTTTGTAATACGACTCACTATAGGGCGGCCGGAATTCGTCGACTGGATCCGGTACCGAGGAGATCTGCC
GCC**CGATCGCC**

ATGAACAGTGAGGAGCAGTACTACGCGGCCACACAGCTCTACAAGGACCCGTGCGCATTCCAGAGGGGCC
CGGTGCCAGAGTTCAGCGCTAACCCCTGCGTGCCTGTACATGGGCGCCAGCCCCACCTCCGCCGCC
ACCCAGTTTACAAGCTCGCTGGGATCACTGGAGCAGGAAGTCTCCGGACATCTCCCATACGAAGTG
CCCCGCTCGCTCCGACGACCCGGCTGGCGCTCACCTCCACCACCACCTCCAGCTCAGCTCGGGCTCG
CCCATCCACCTCCCGACCTTTCCGAATGGAACCGAGCCTGGGGCCTGGAAGAGCCCAACCGCTCCA
GCTCCCTTTCCCGTGGATGAAATCCACCAAAGCTCACGCGTGAAAGGCCAGTGGGAGGAGGTGCTTAC
ACAGCGGAACCCGAGGAAAAAAGAGGACCCGACTGCCTACACCCGGGCGCAGCTGCTGGAGCTGGAGA
AGGAATTTATTTAACAATAACATCTCCCGGCCCGCCGGTGGAGCTGGCAGTGATGTTGAACTTGAC
CGAGAGACACATCAAAATCTGGTTCCAAAACCGTCGCATGAAGTGAAAAAGAGGAAGATAAGAAACGT
AGTAGCGGGACCCGAGTGGGGCGGTGGGGCGAAGAGCCGGAGCAAGATTGTGCGGTGACCTCGGGCG
AGGAGCTGCTGGCAGTGCCACCGCTGCCACCTCCCGAGGTGCCGTGCCCCAGGCGTCCAGCTGCAGT
CCGGGAGGGCTACTGCCTTCGGGCTTAGCGTGTGCCACAGCCCTCCAGCATCGGCCACTGCCACCG
CAGGAACCCCG

AG**CGGACCG**ACGCGTACGCGGCCGCTCGAG - GFP Tag - GTTTAA



[View online »](#)

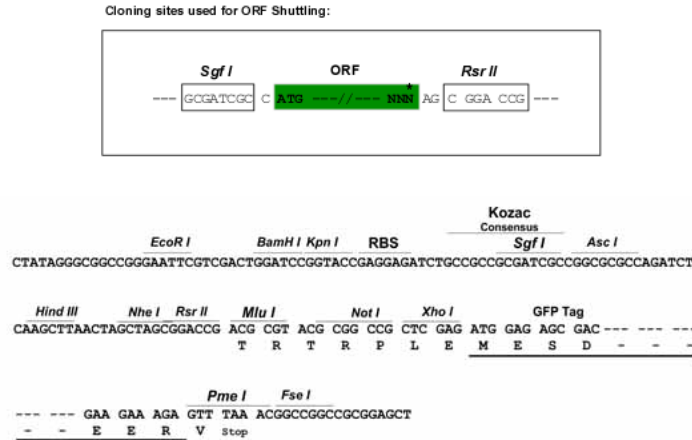
Protein Sequence: >MG227421 representing NM_008814
Red=Cloning site Green=Tags(s)

MNSEEQYYAATQLYKDPCAFQRGVPVEFSANPPACLYMGRQPPPPPPQFTSSLGSLEQGSPDISPYEV
 PPLASDDPAGAHLHHHLPAQLGLAHPGPFNGTEPGGLEEPNRVQLPFPWMKSTKAHAWKGQWAGGAY
 TAEPEENKRTRTAYTRAQLLELEKEFLFNKYISRPRRVELAVMLNLTERHIKIWFQNRMRKWKKEEDKKR
 SSGTSPGGGGGEEPEQDCAVTSGEELLAVPPLPPPGGAVPPGVPAAVREGLLPSGLSVSPQPSIIAPLRP
 QEPR

SGPTRRRLE - GFP Tag - V

Restriction Sites: SgfI-RsrII

Cloning Scheme:



ACCN: NM_008814

ORF Size: 852 bp

OTI Disclaimer: The molecular sequence of this clone aligns with the gene accession number as a point of reference only. However, individual transcript sequences of the same gene can differ through naturally occurring variations (e.g. polymorphisms), each with its own valid existence. This clone is substantially in agreement with the reference, but a complete review of all prevailing variants is recommended prior to use. [More info](#)

OTI Annotation: This clone was engineered to express the complete ORF with an expression tag. Expression varies depending on the nature of the gene.

Components: The ORF clone is ion-exchange column purified and shipped in a 2D barcoded Matrix tube containing 10ug of transfection-ready, dried plasmid DNA (reconstitute with 100 ul of water).

Reconstitution Method:

1. Centrifuge at 5,000xg for 5min.
2. Carefully open the tube and add 100ul of sterile water to dissolve the DNA.
3. Close the tube and incubate for 10 minutes at room temperature.
4. Briefly vortex the tube and then do a quick spin (less than 5000xg) to concentrate the liquid at the bottom.
5. Store the suspended plasmid at -20°C. The DNA is stable for at least one year from date of shipping when stored at -20°C.

RefSeq: [NM_008814.4](#)

RefSeq Size: 1287 bp

RefSeq ORF: 855 bp

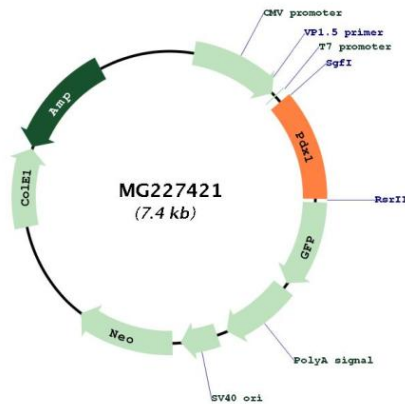
Locus ID: 18609

UniProt ID: [P52946](#)

Cytogenetics: 5 86.84 cM

Gene Summary: Activates insulin and somatostatin gene transcription. Key regulator of islet peptide hormone expression but also responsible for the development of the pancreas, most probably by determining maturation and differentiation of common pancreatic precursor cells in the developing gut. As part of a PDX1:PBX1b:MEIS2b complex in pancreatic acinar cells is involved in the transcriptional activation of the ELA1 enhancer; the complex binds to the enhancer B element and cooperates with the transcription factor 1 complex (PTF1) bound to the enhancer A element. Binds the DNA sequence 5'-CC[CT]TAATGGG-3'. [UniProtKB/Swiss-Prot Function]

Product images:



Circular map for MG227421